

Unitized Precast



Historic context

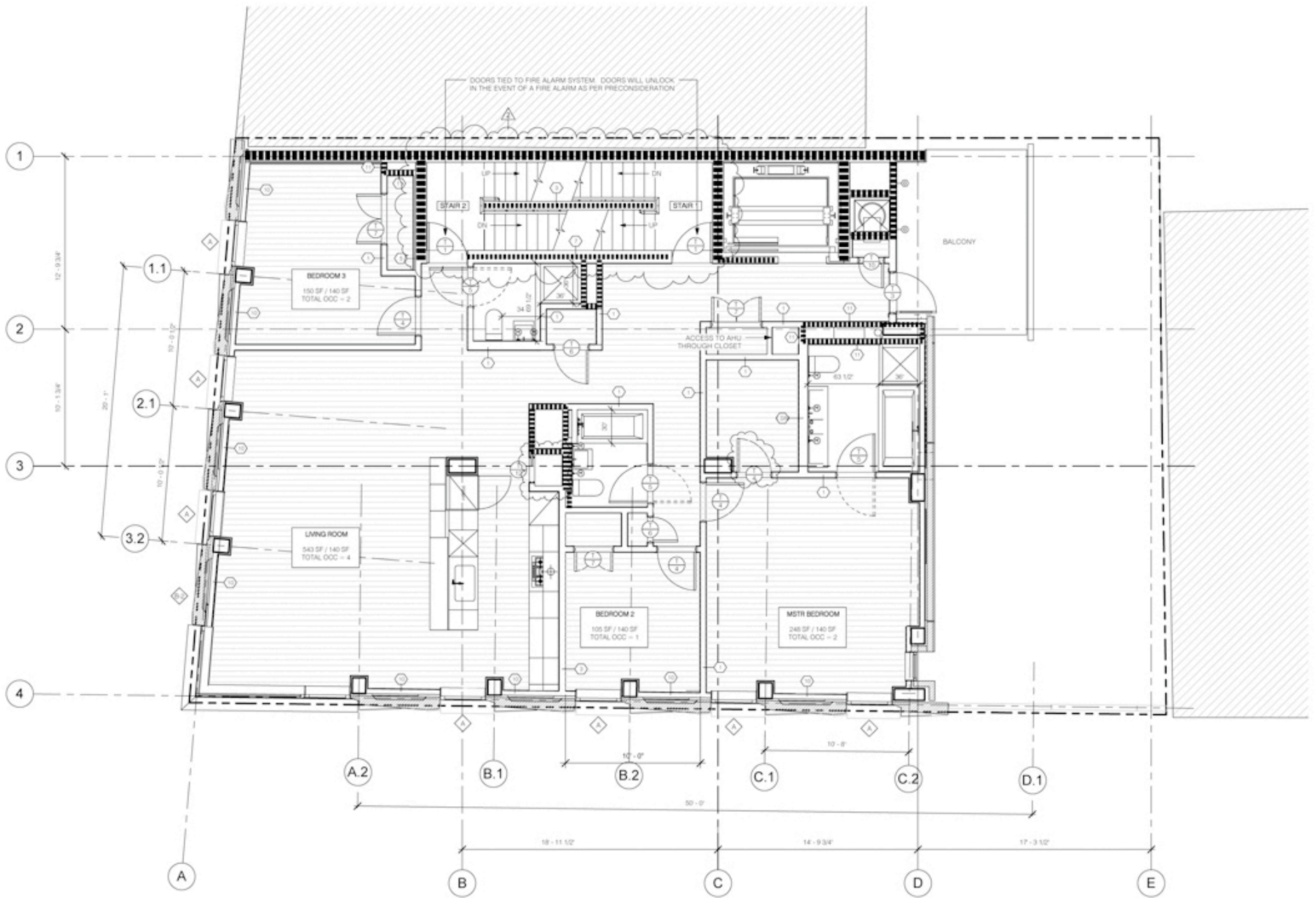
Masonry mandate

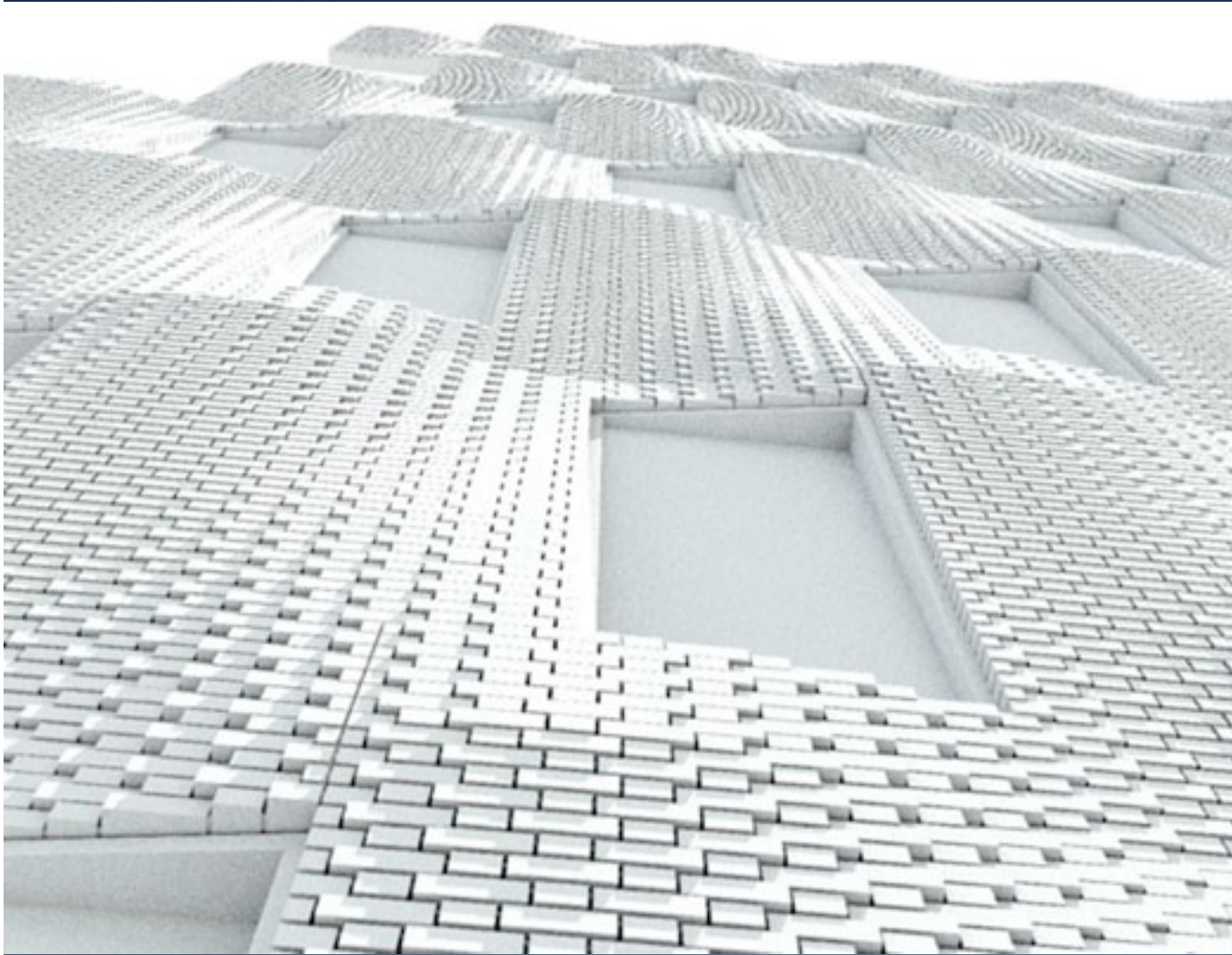
Real estate pressure
for thinness

Zoning for corbels
(10.s.f of each 100 s.f.
may extend beyond
the property line)

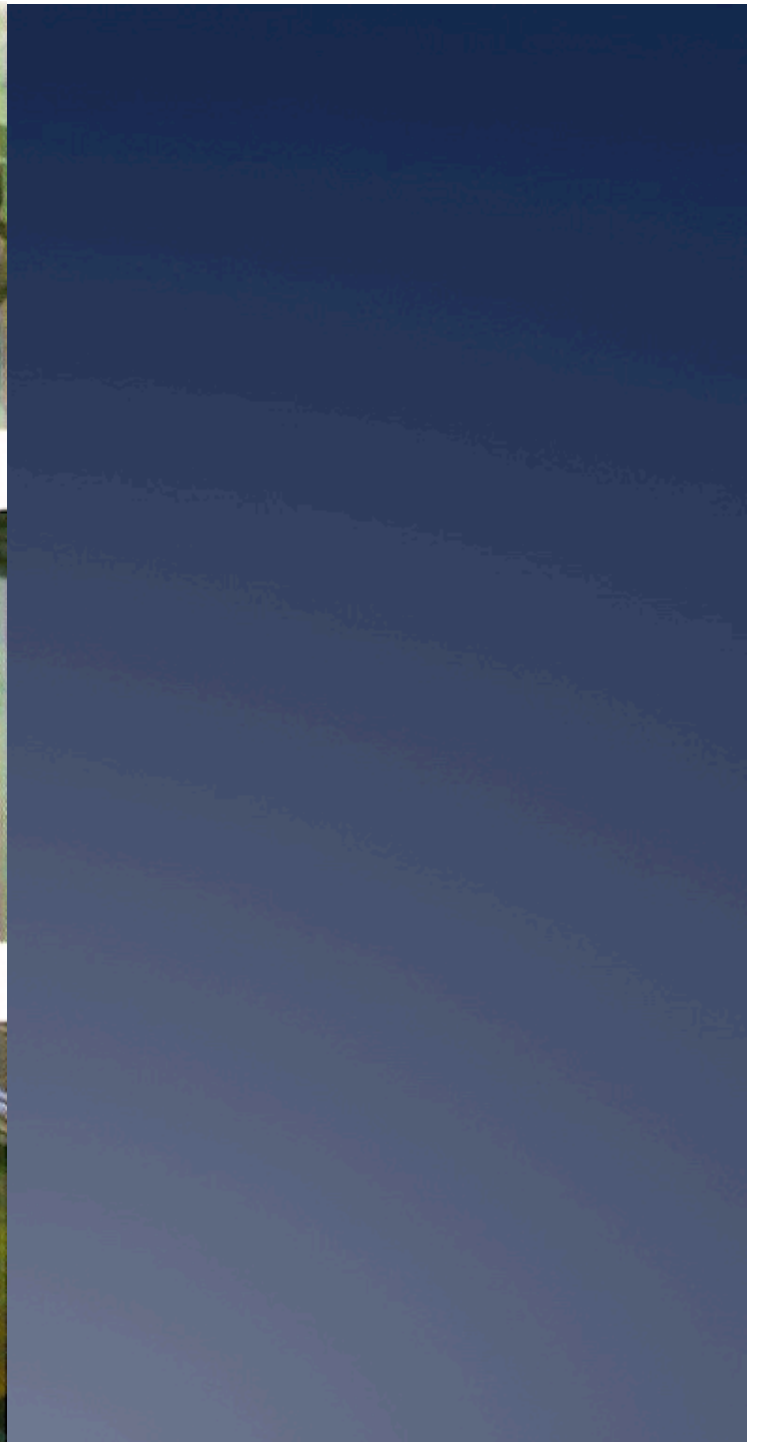
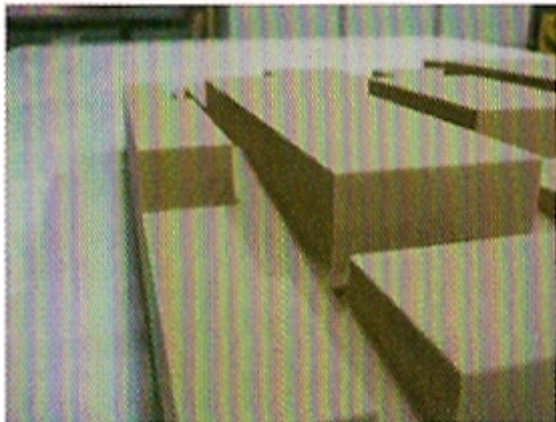
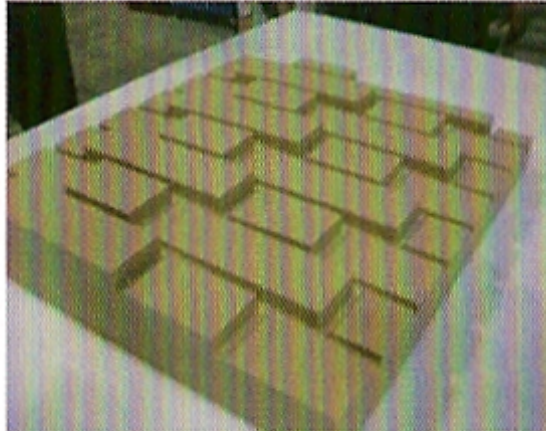
...provokes a 10 inch
ripple

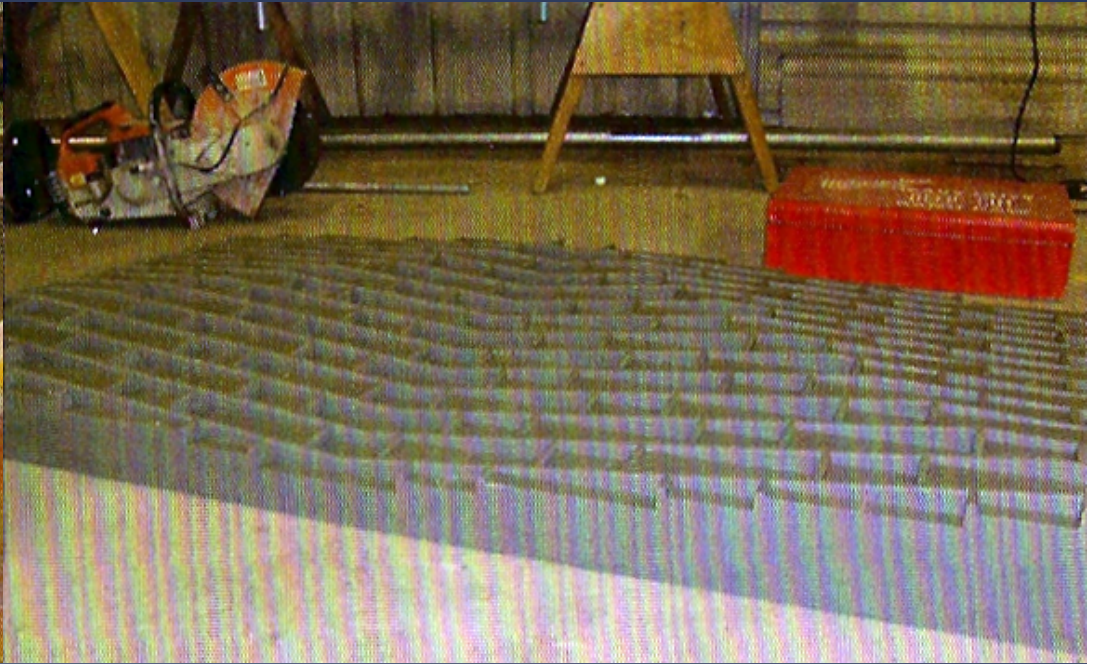
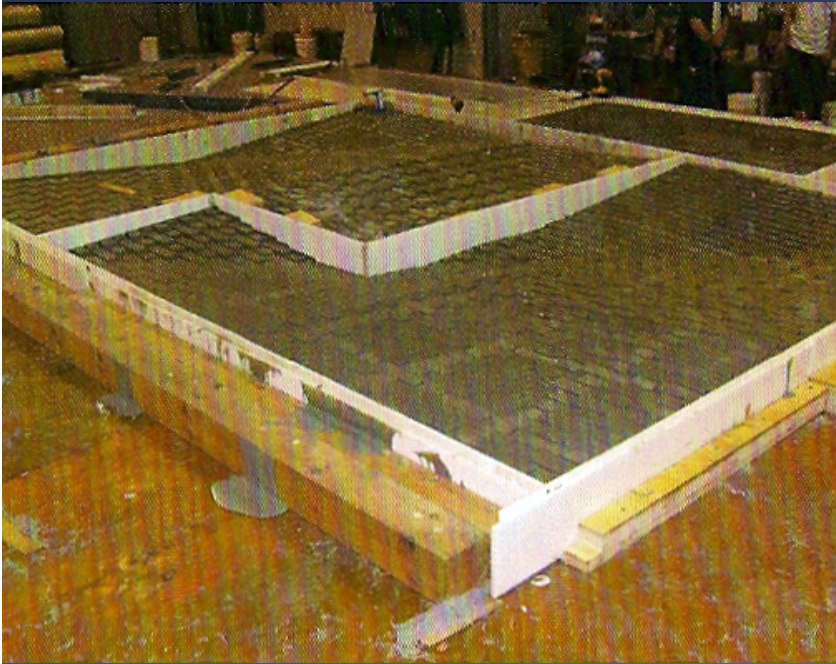
290 Mulberry Street, SHOP
Architects (Steve Sanderson)



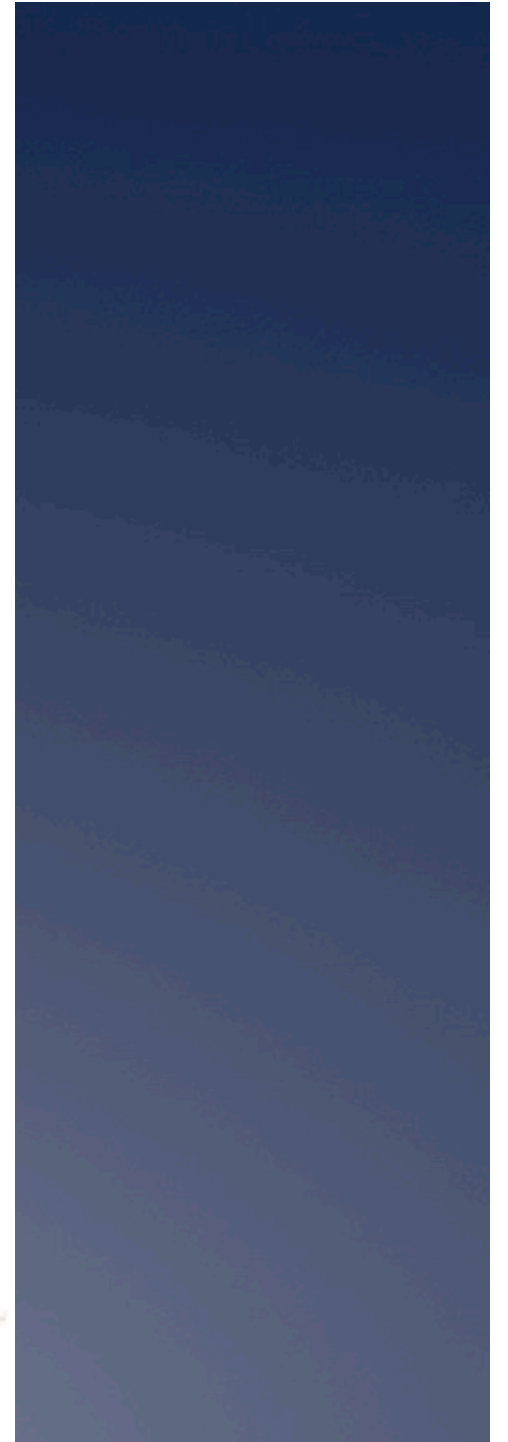
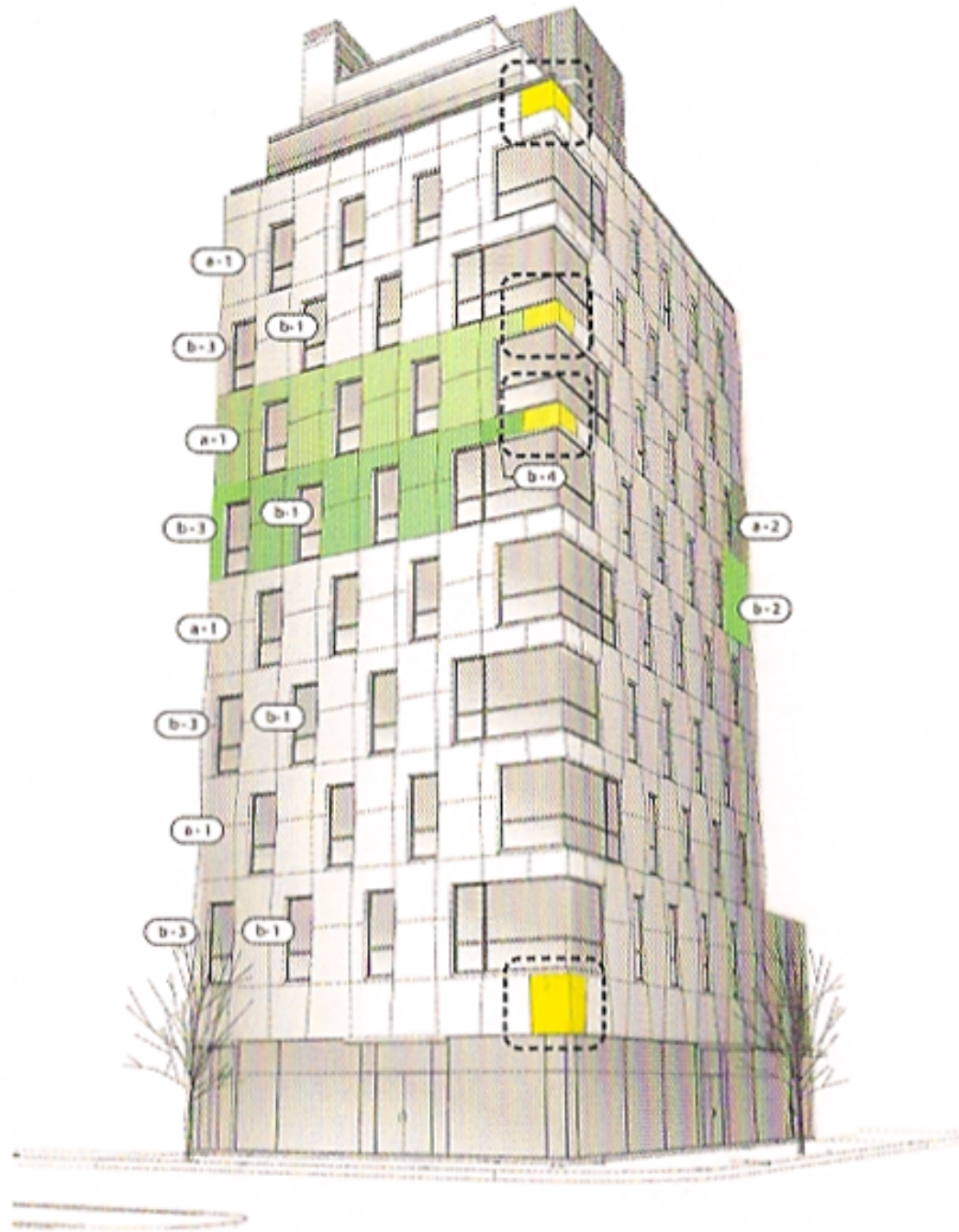


A "panelized" brick wall
(rendering)







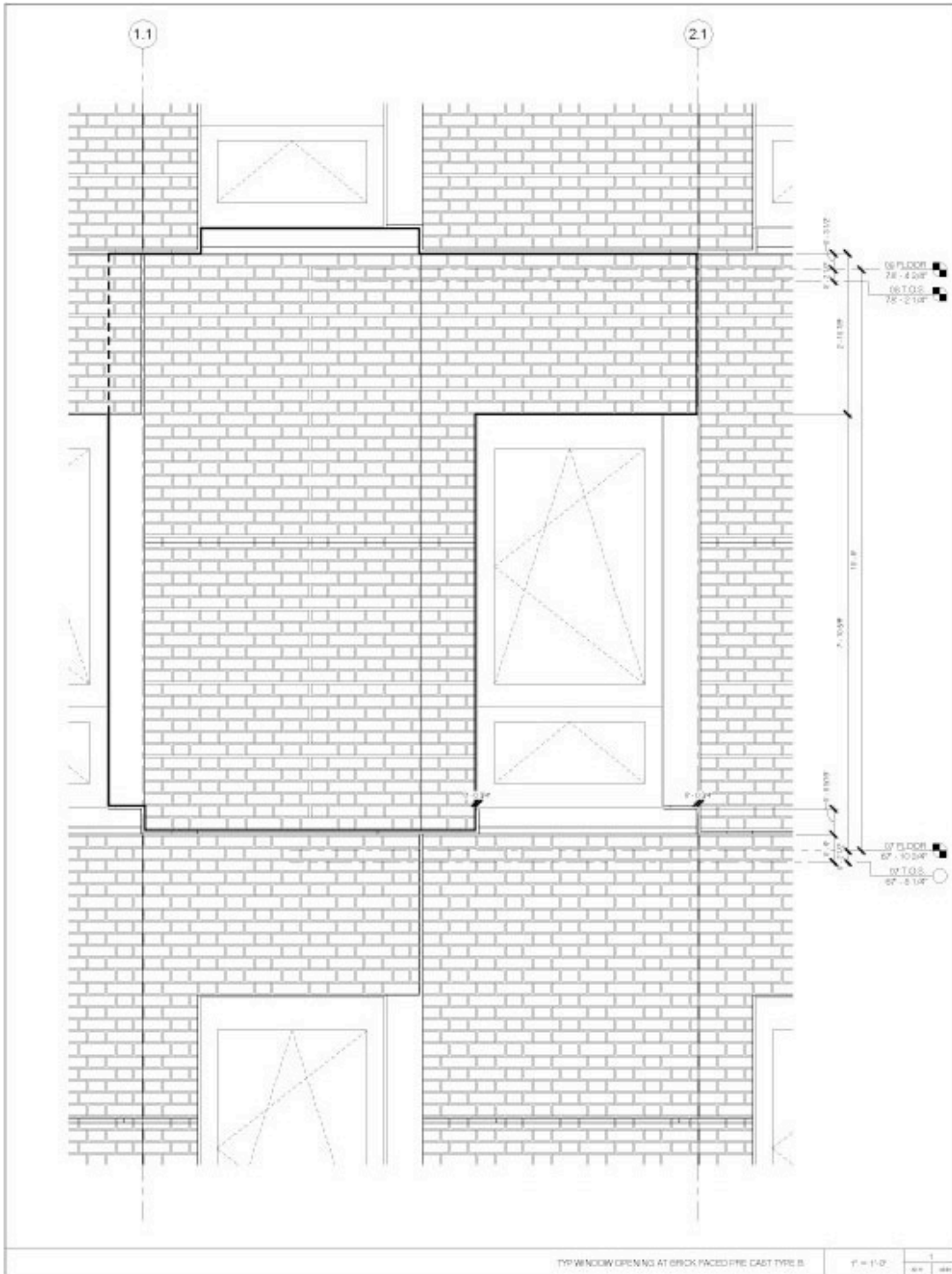


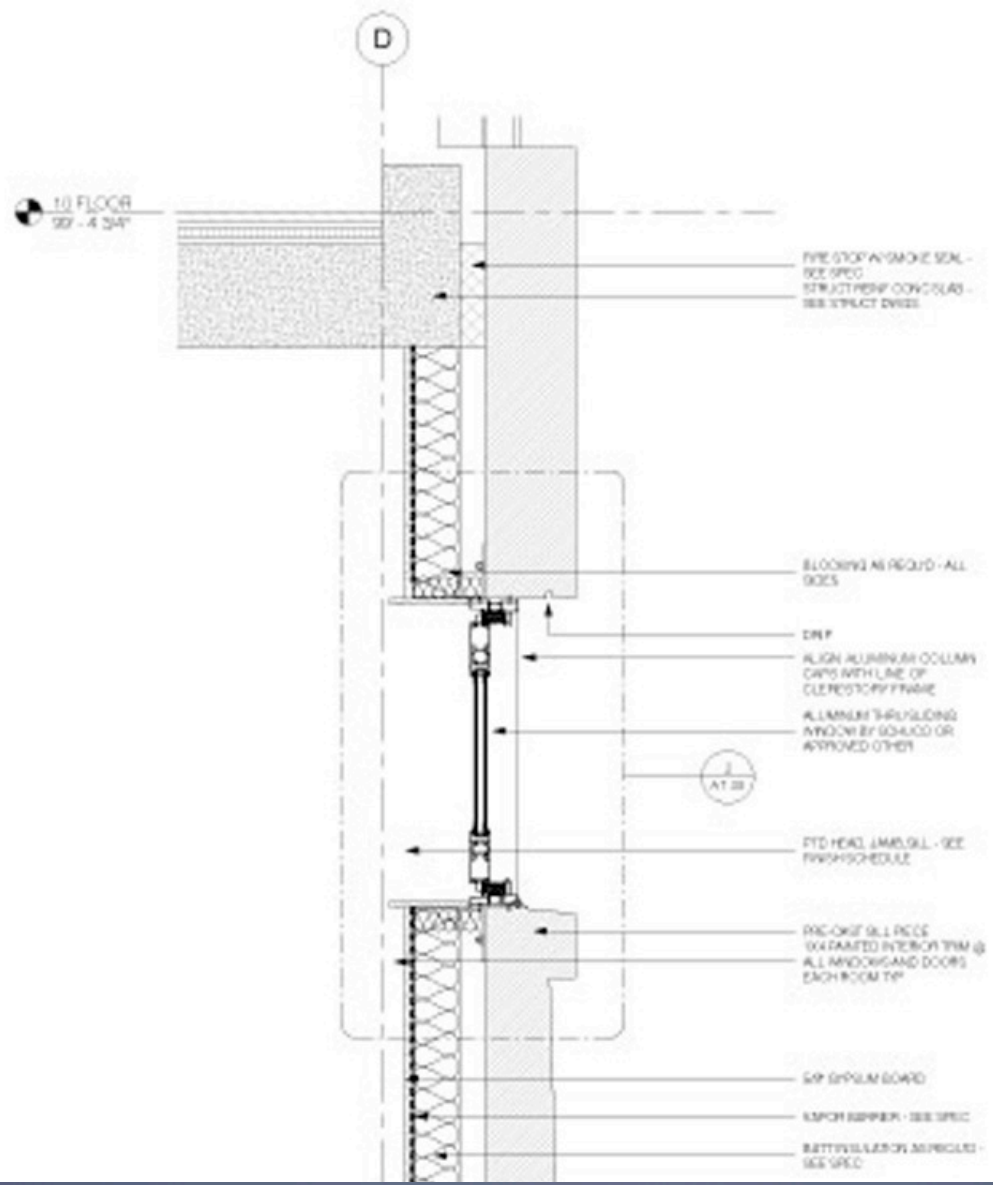


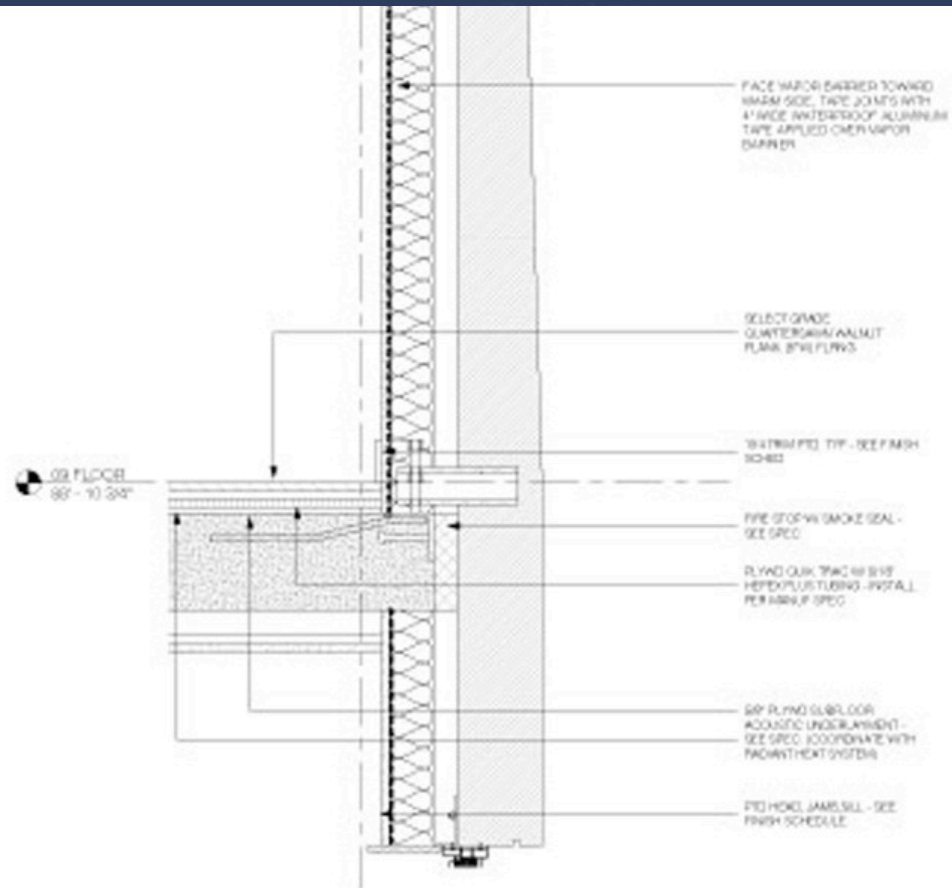
Bonded to a precast concrete backing

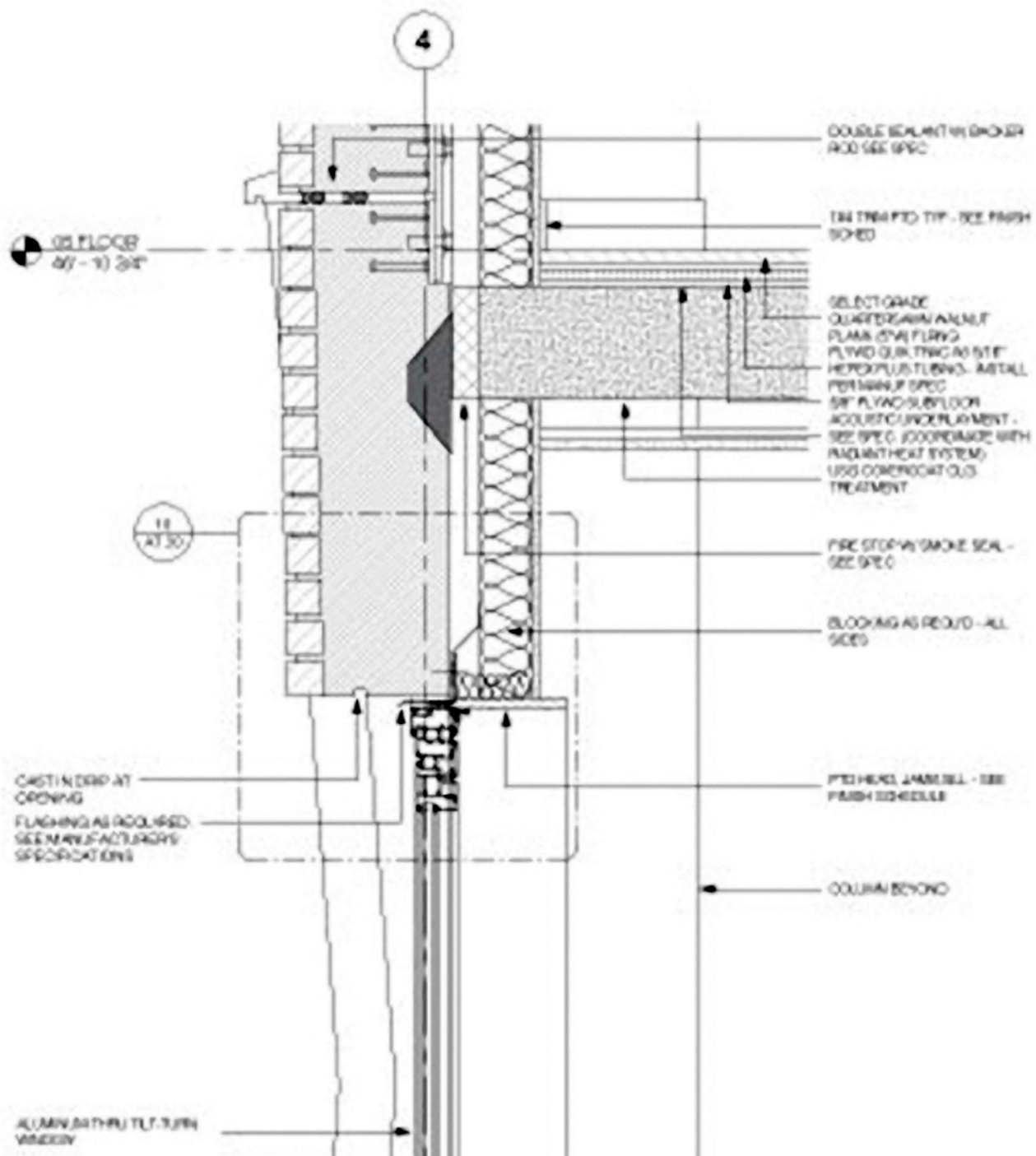


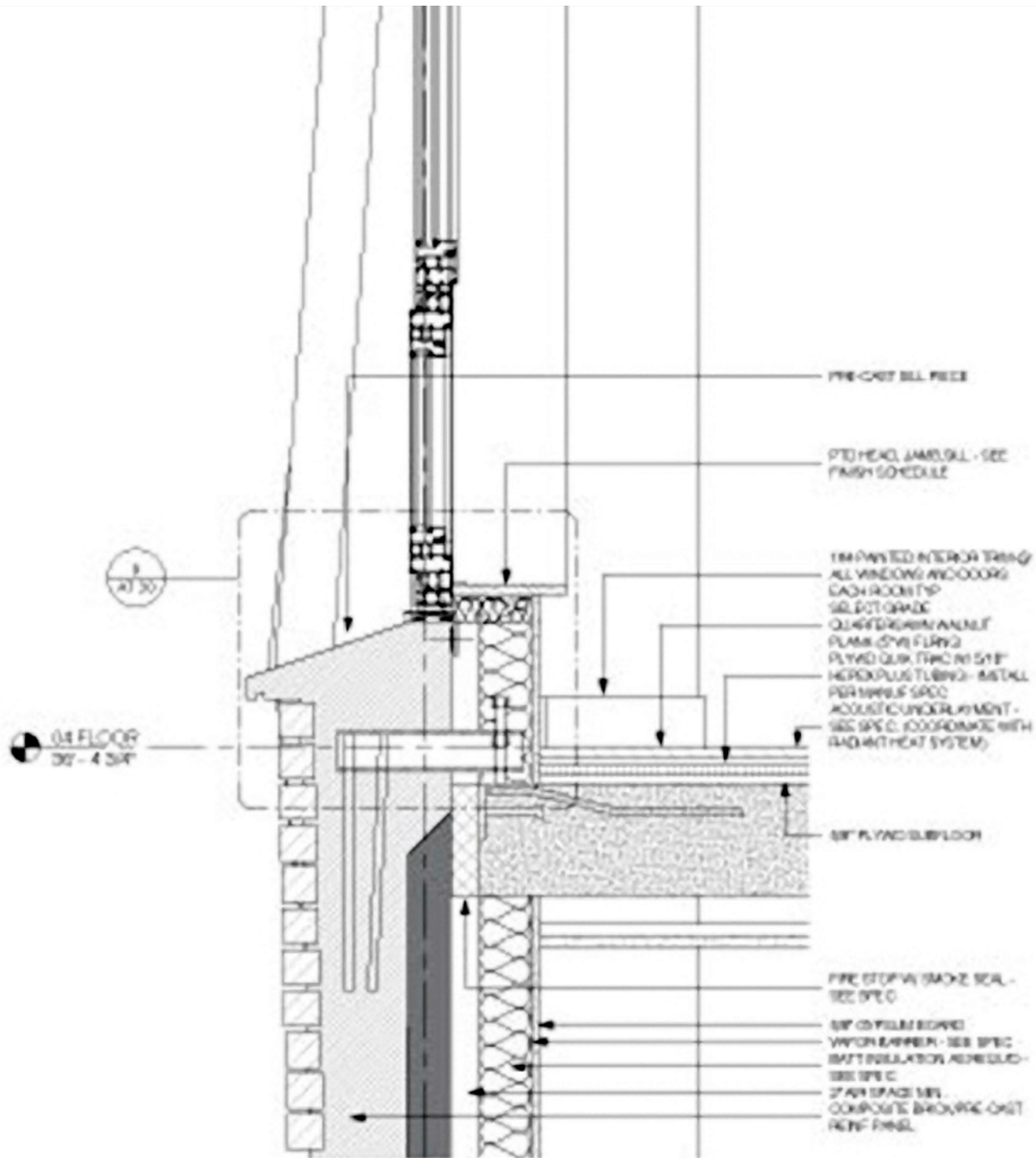












PRE-CAST BELL PIECE

PTO HEAD JAMB, SILL - SEE FINISH SCHEDULE

IMPAVED INTERIOR TRIM
 ALL WINDOWS AND DOORS
 EACH ROOM TP
 SILICONE GROUT
 QUARTER ROUND ANGLE
 FLANK (2x8) FLNG
 PLYD GIBR TRC IN 5/8"
 HEROPLUS TUBING - INSTALL PER 1995 IBC SPEC
 ACOUSTIC UNDERLAYMENT - SEE SPEC. COORDINATE WITH RADIANT HEAT SYSTEM

8/4 PLYD SUBFLOOR

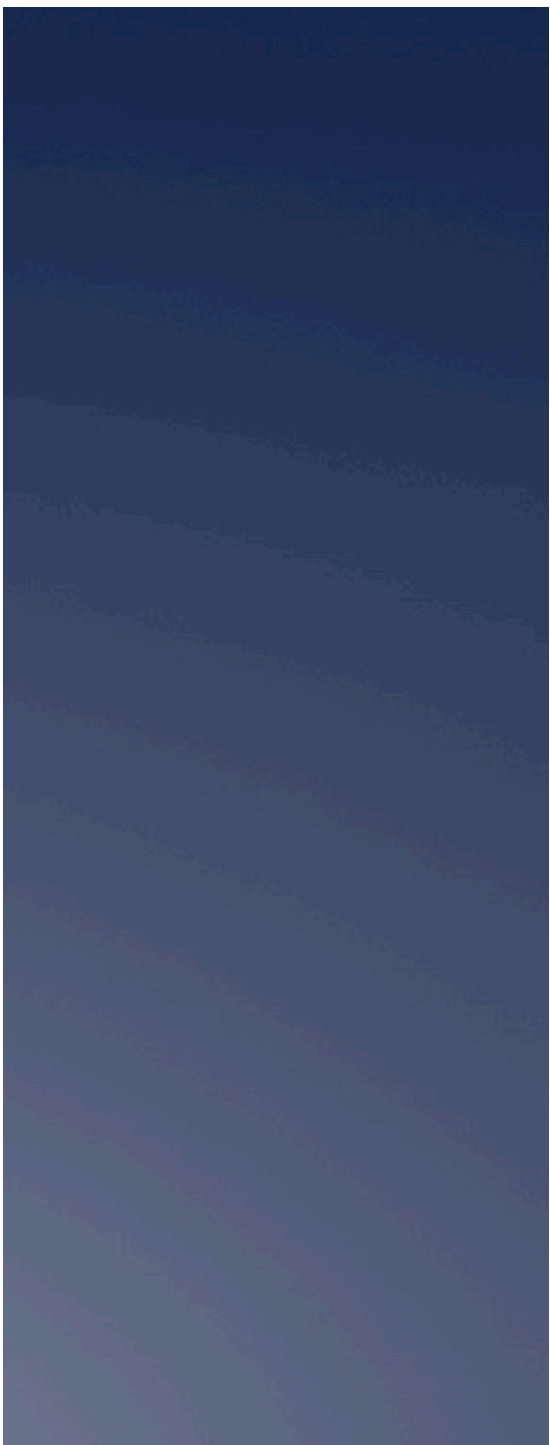
FIRE STOP/SMOKE SEAL - SEE SPEC

8/4 GYPSUM BOARD
 VAPOR BARRIER - SEE SPEC
 BATT INSULATION R19 @ 16" OC - SEE SPEC

2" AIR SPACE MIN
 COMPOSITE BRIDGE CAST REIN. CONCR.

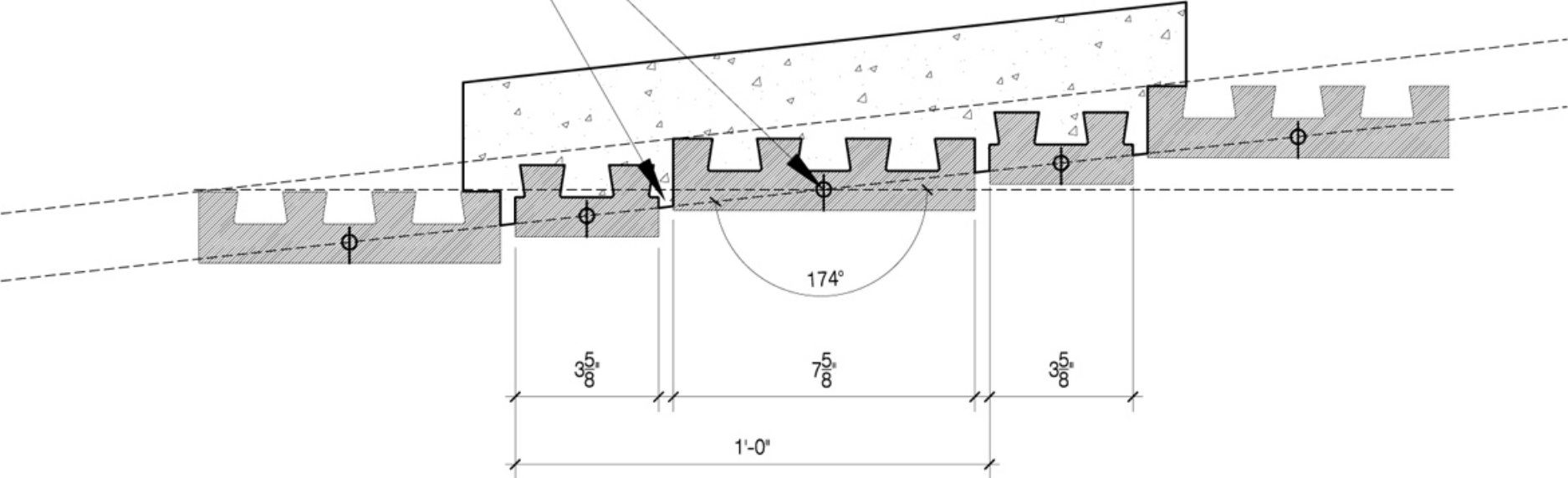
9
 AT 30'

04 FLOOR
 30' - 4 3/4"

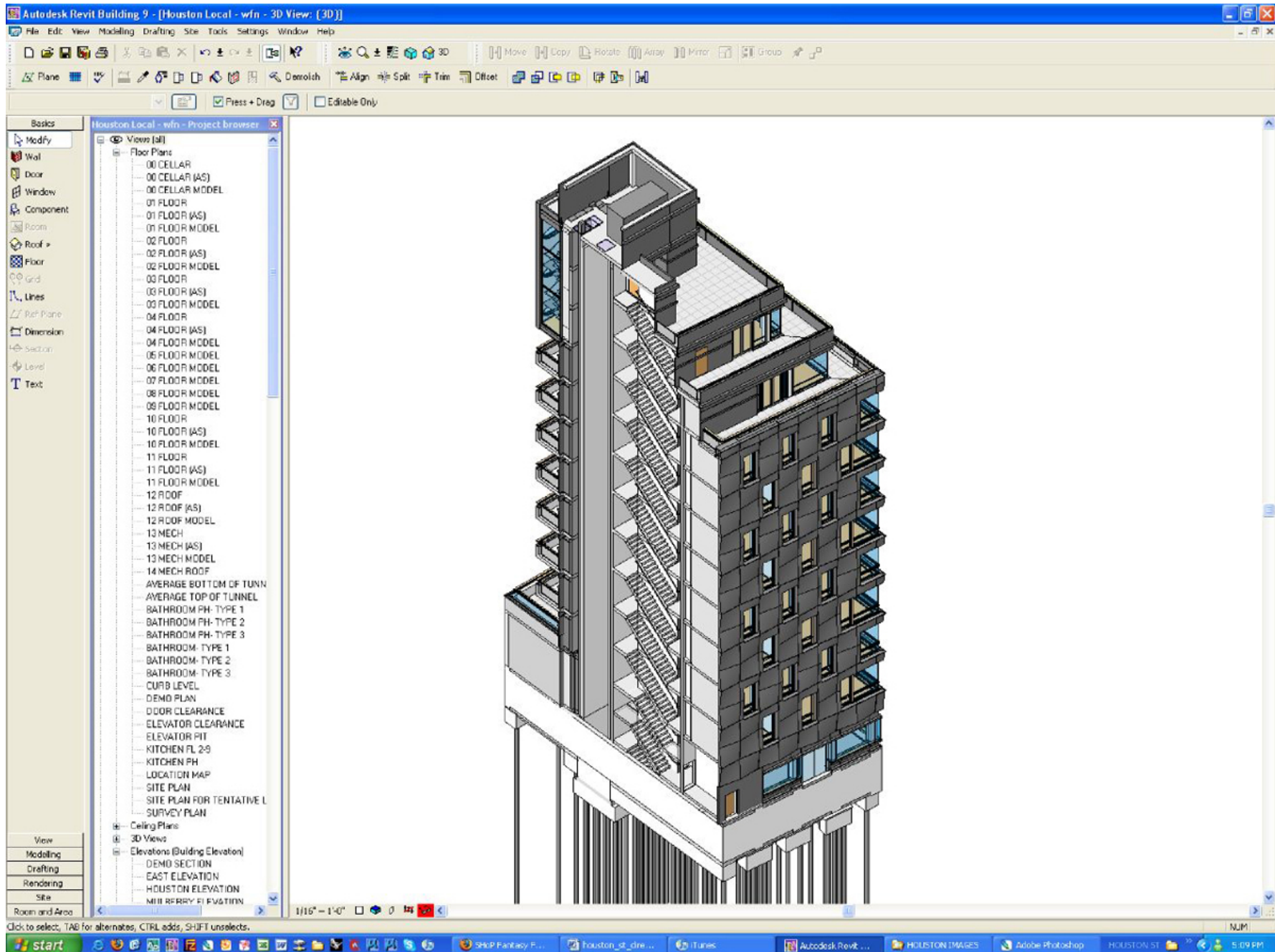


ACTUAL CONDITION WITH PANEL AS DESIGNED

WORKPOINT OF BRICK UNIT AT
 $\frac{1}{2}$ " FROM FACE AND CTRD ALONG LENGTH.
 $\frac{1}{8}$ " EXPOSURE OF FACE OF BRICK
FROM MORTAR JOINT.







Supported by Revit's BIM technology









A great flash animation can be found at
<http://www.290mulberry.com/#/Nolita/>