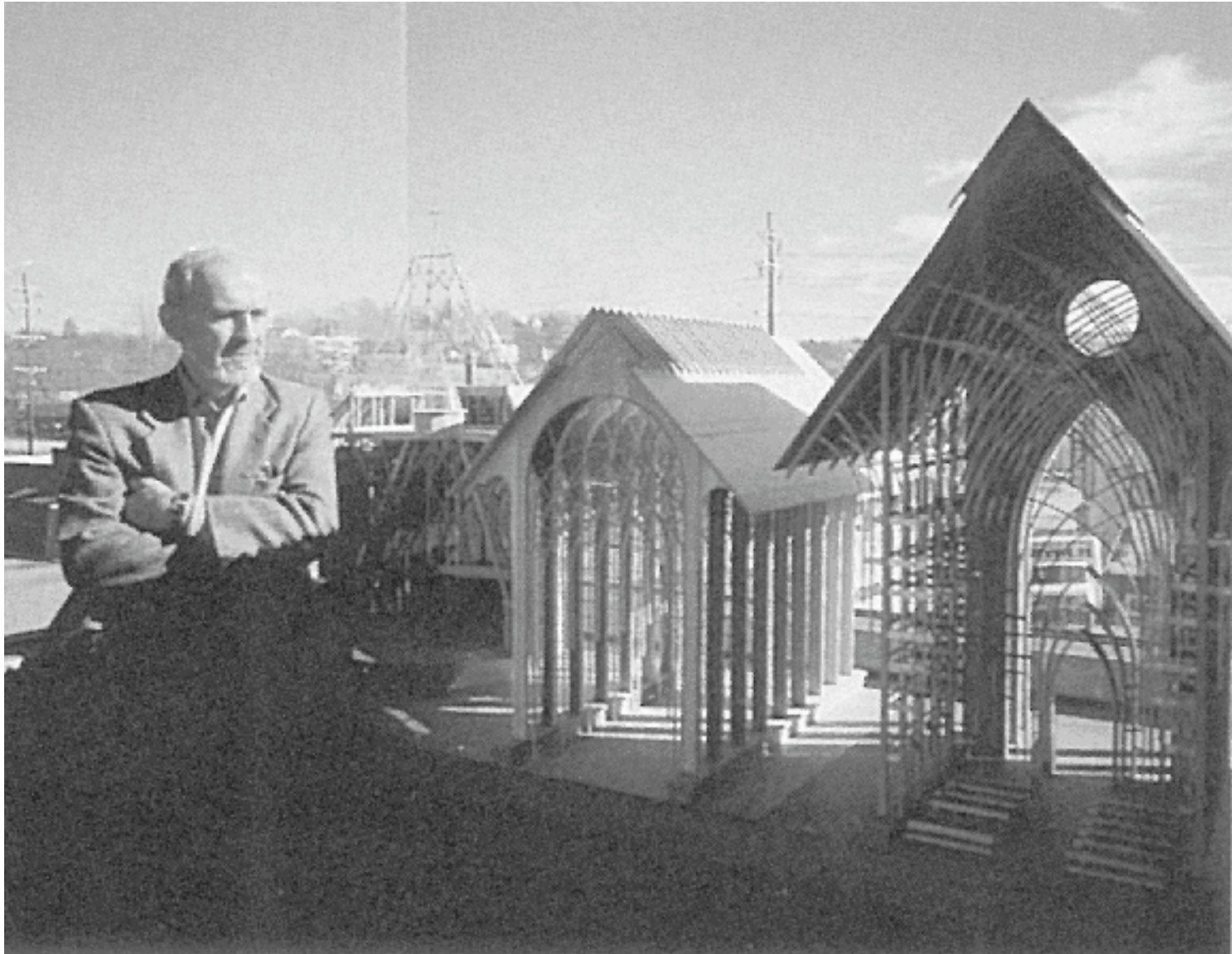
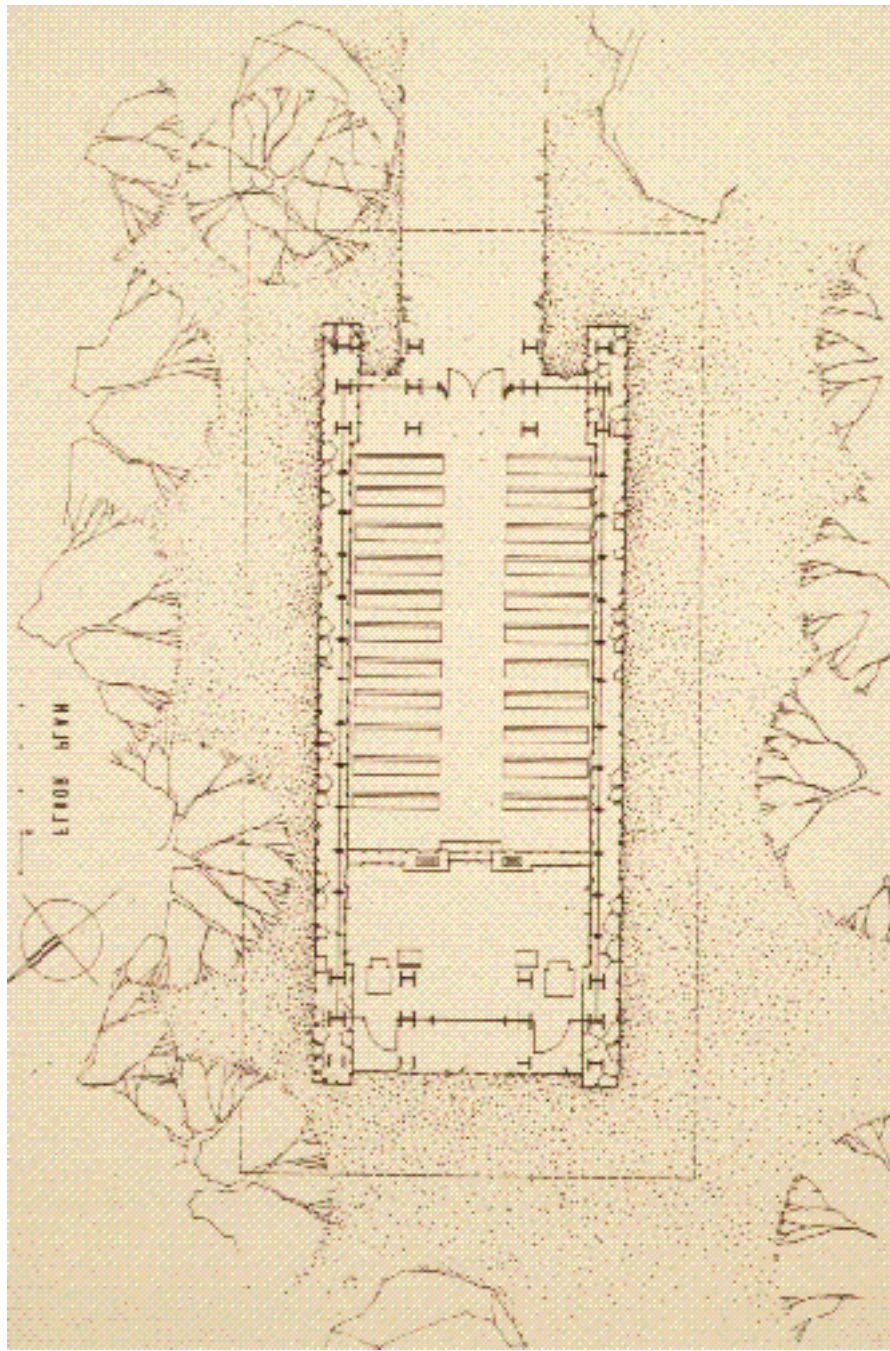
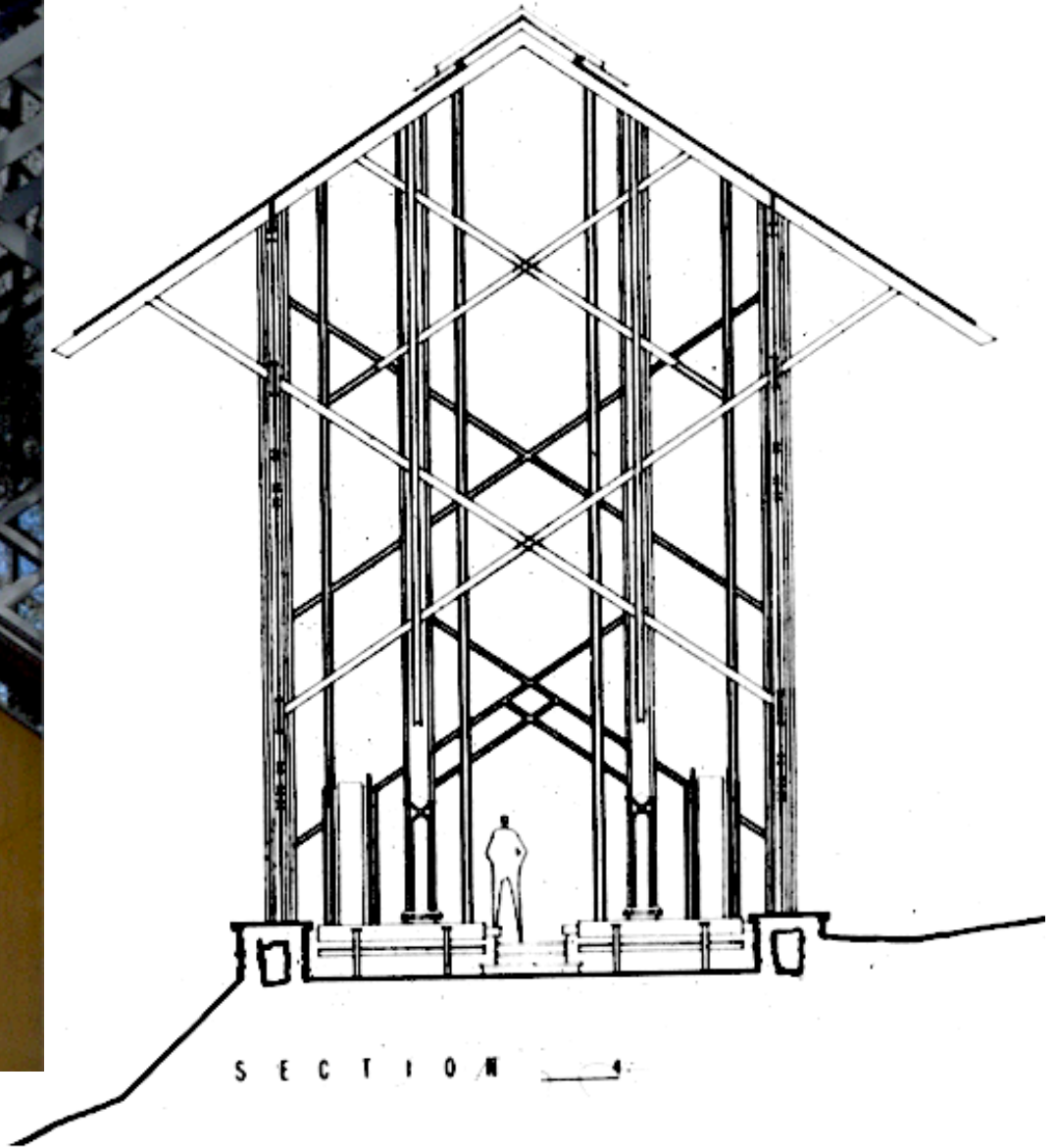


Thorncrown Chapel 1980  
E.Fay Jones, Architect

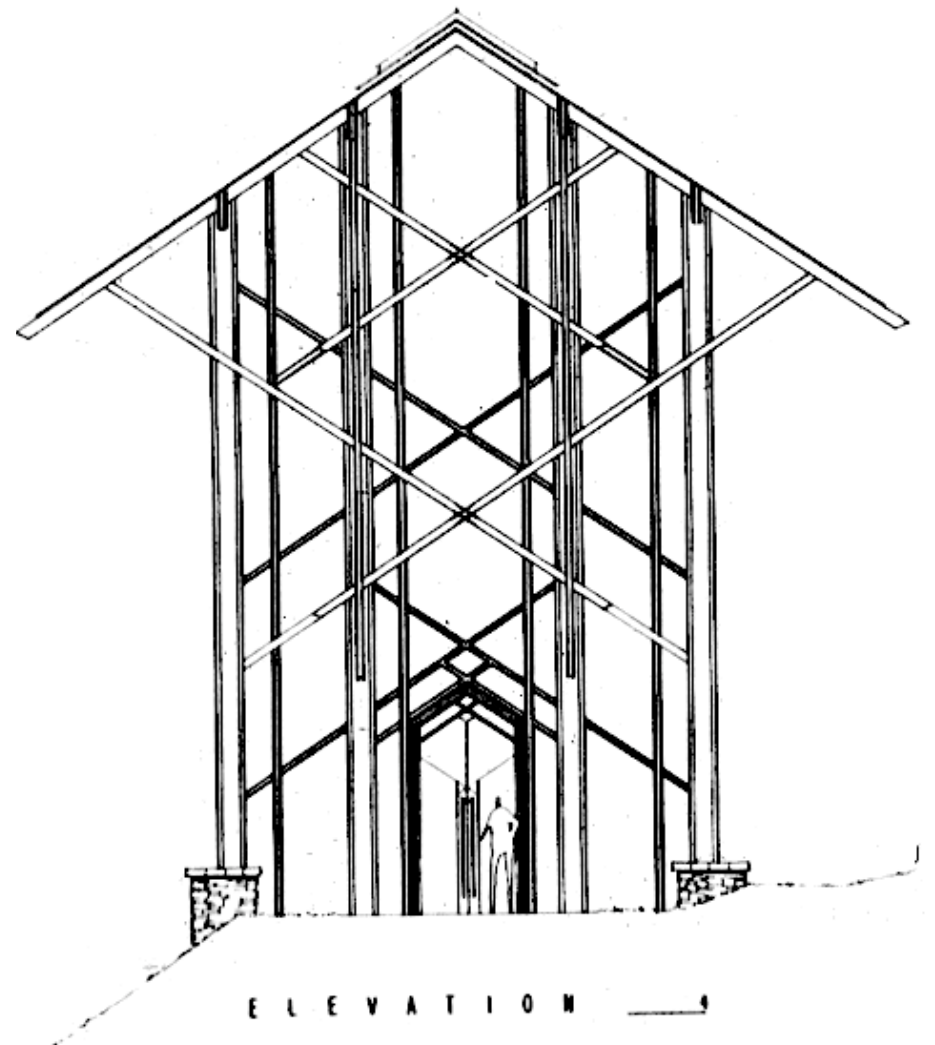
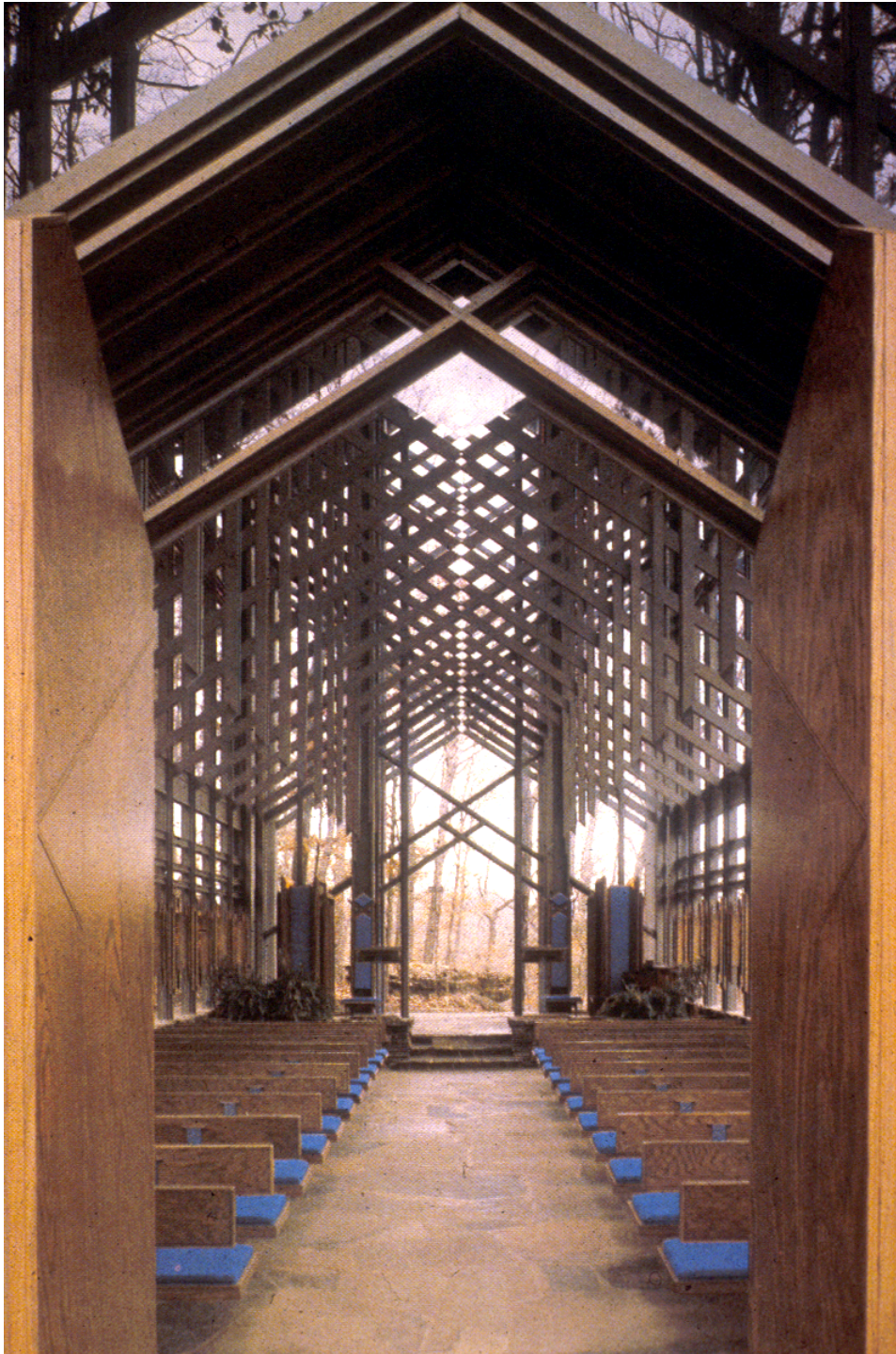


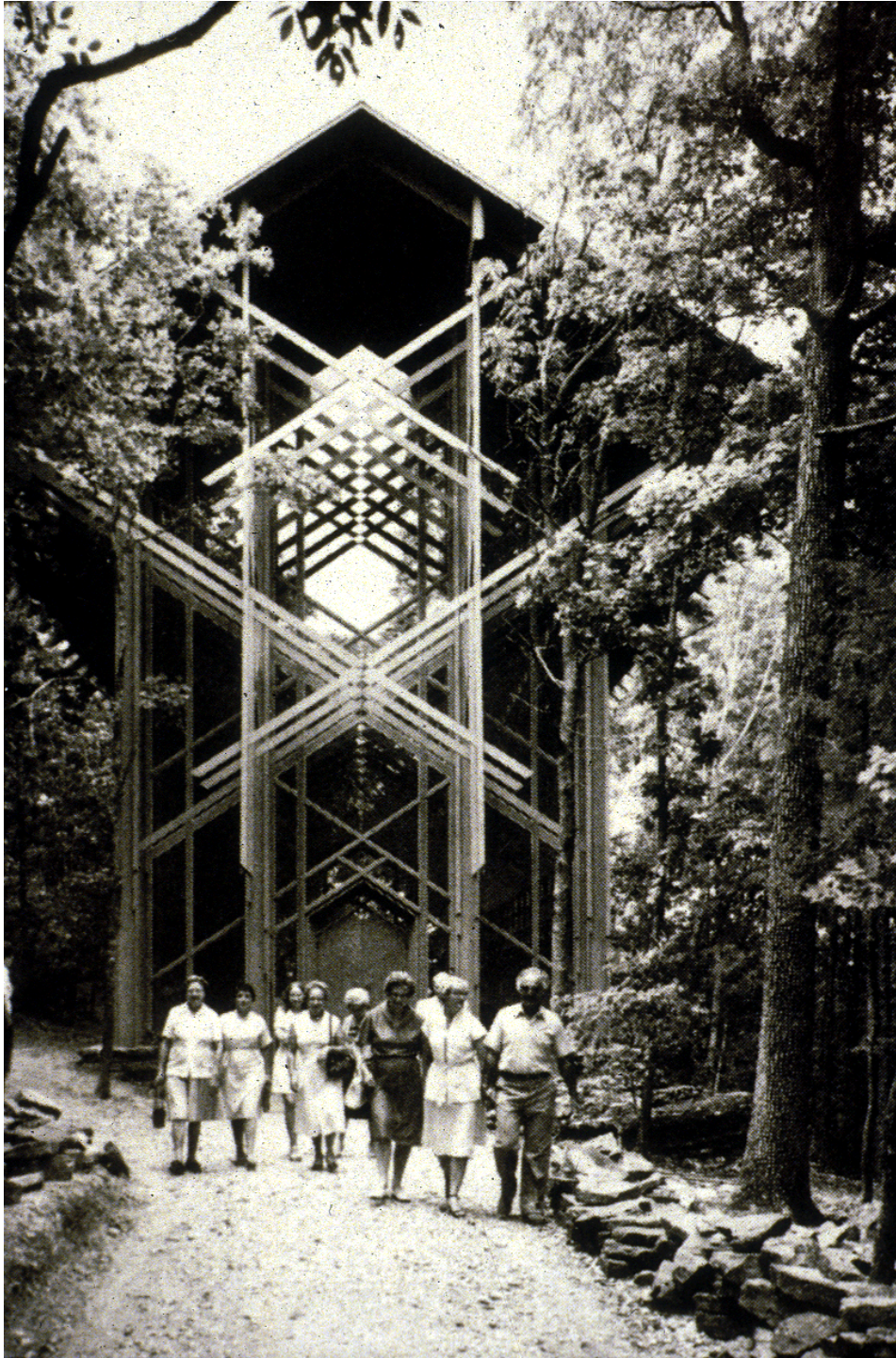




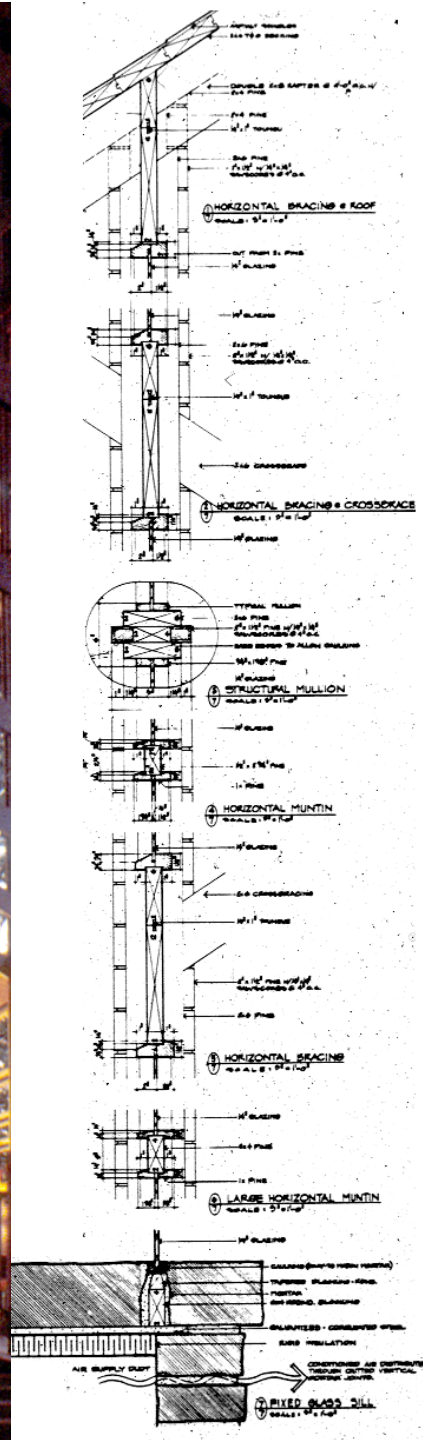


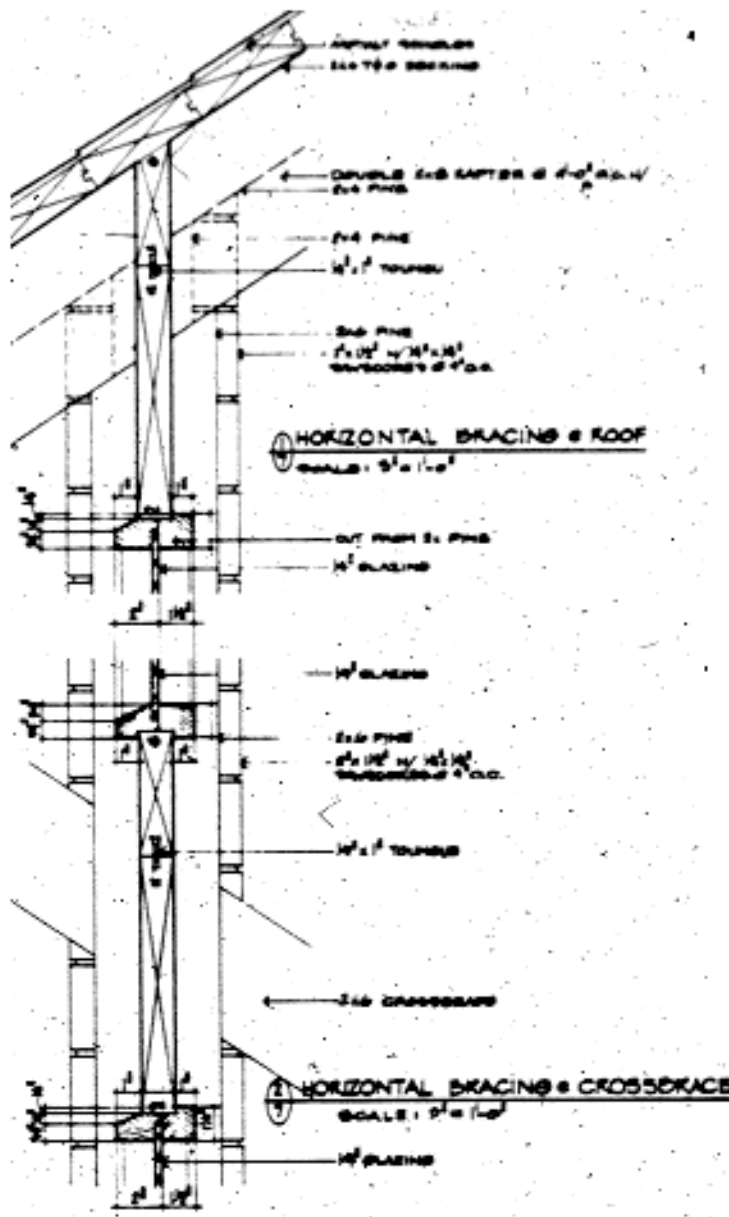
S E C T I O N 4

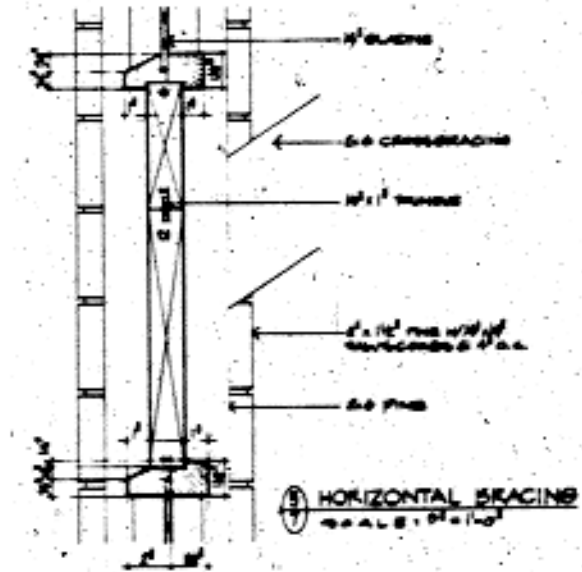
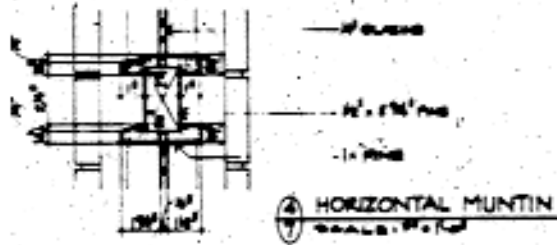
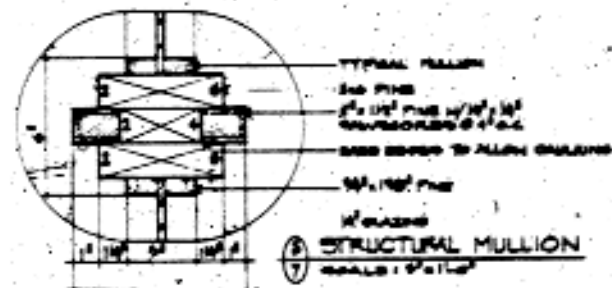




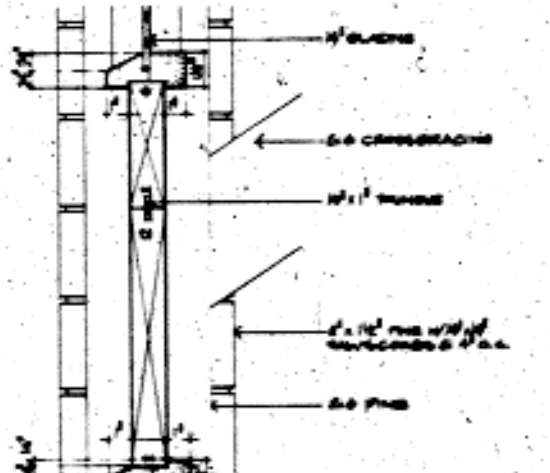




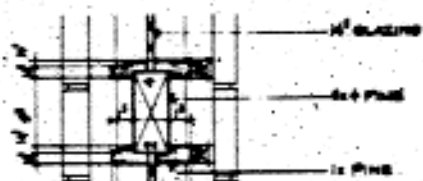




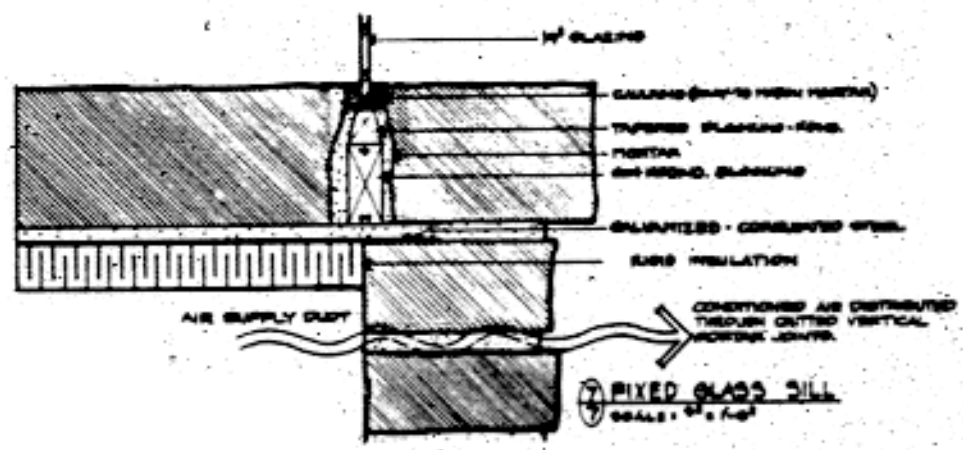
14 PINE  
 4 HORIZONTAL MUNTIN  
 SCALE: 3/4" = 1'-0"

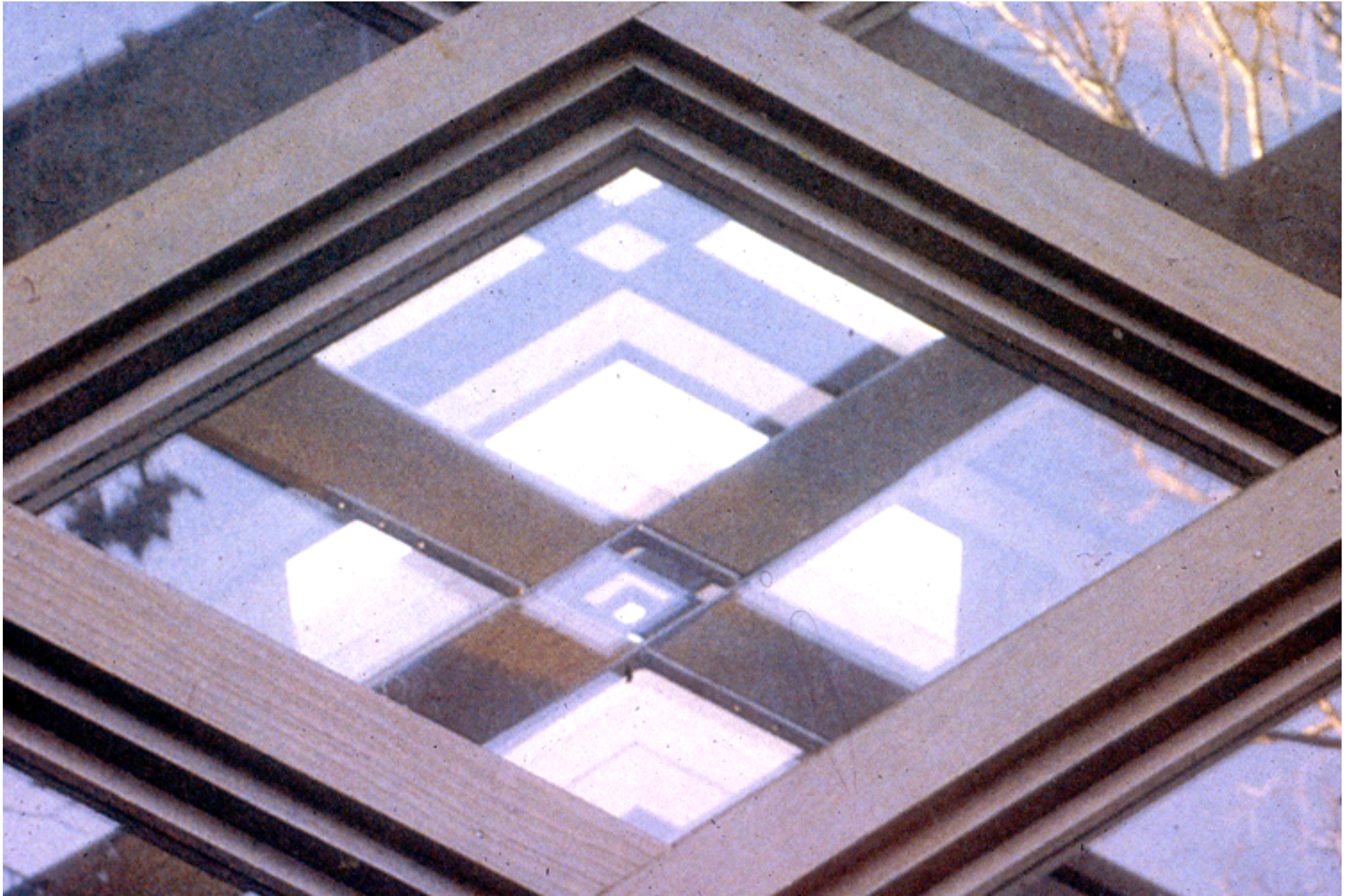


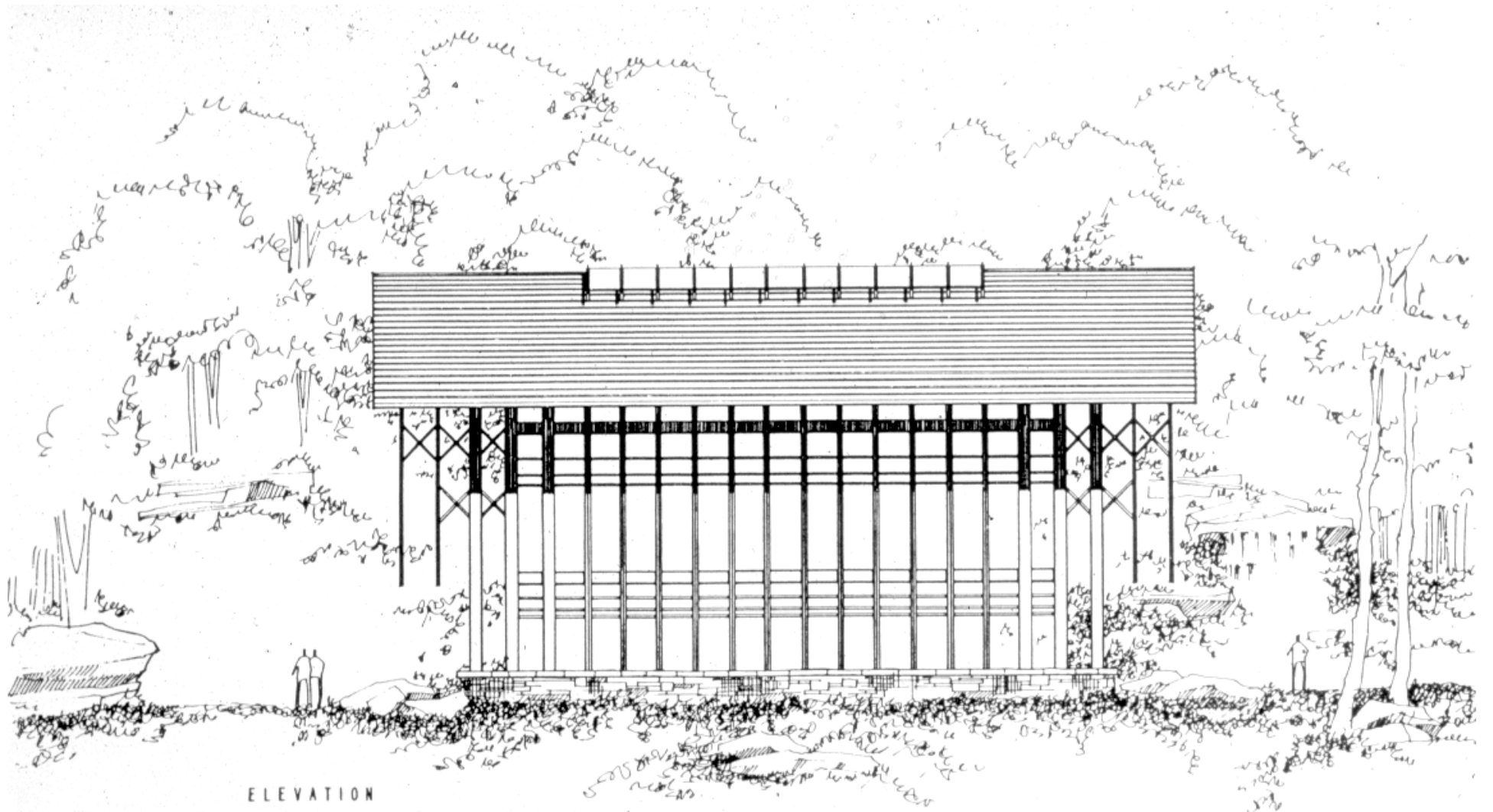
5 HORIZONTAL BEACING  
 SCALE: 3/4" = 1'-0"



6 LARGE HORIZONTAL MUNTIN  
 SCALE: 3/4" = 1'-0"

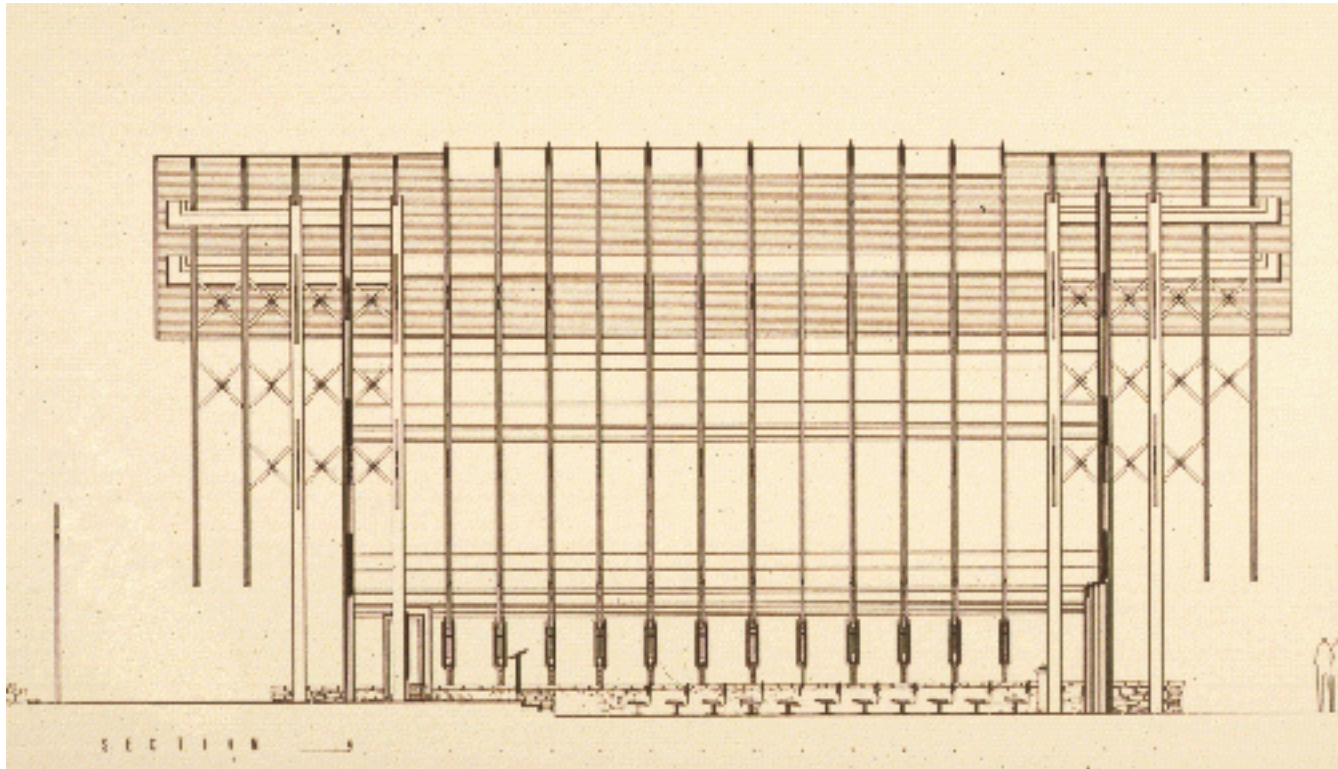






ELEVATION

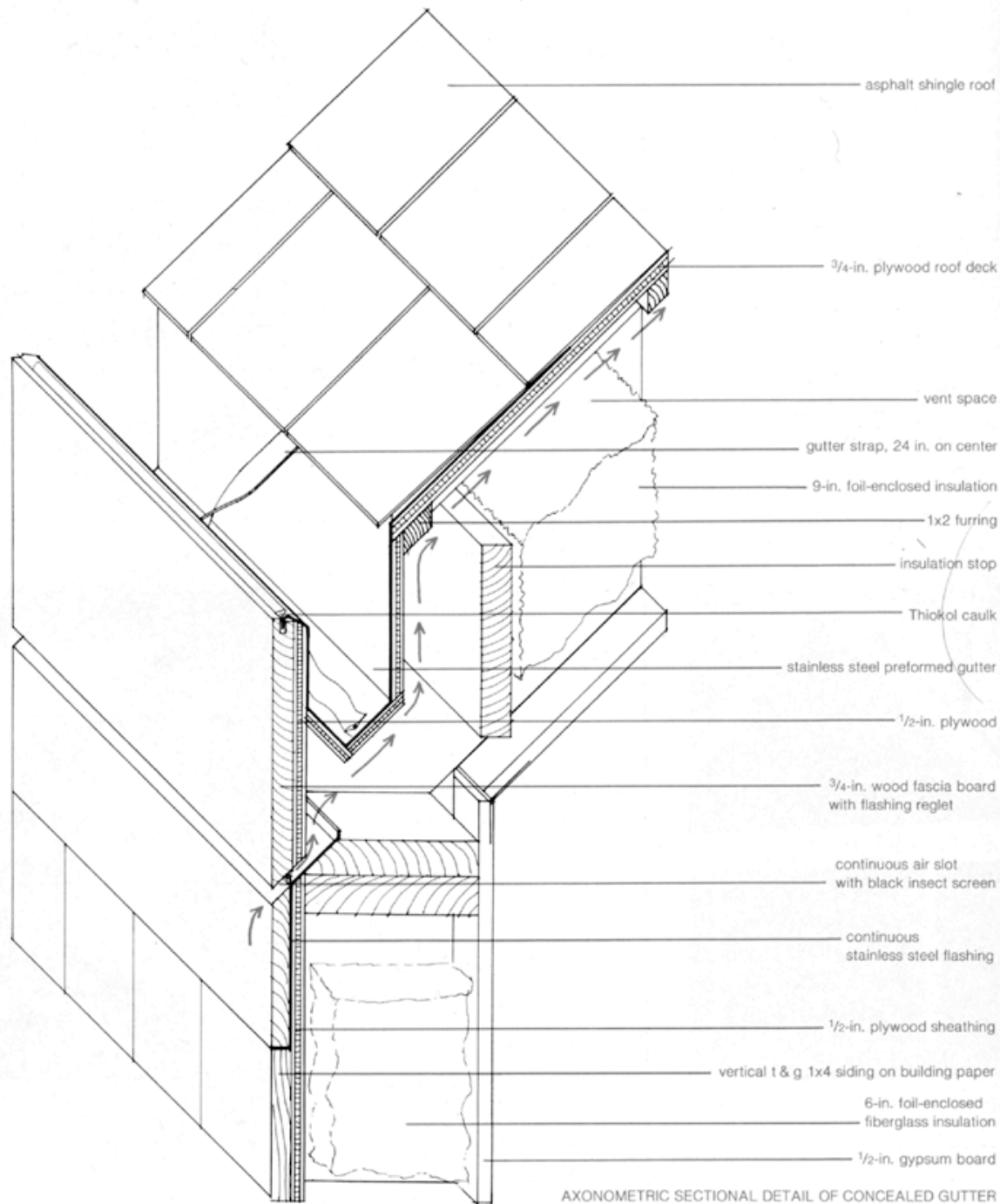
— 3



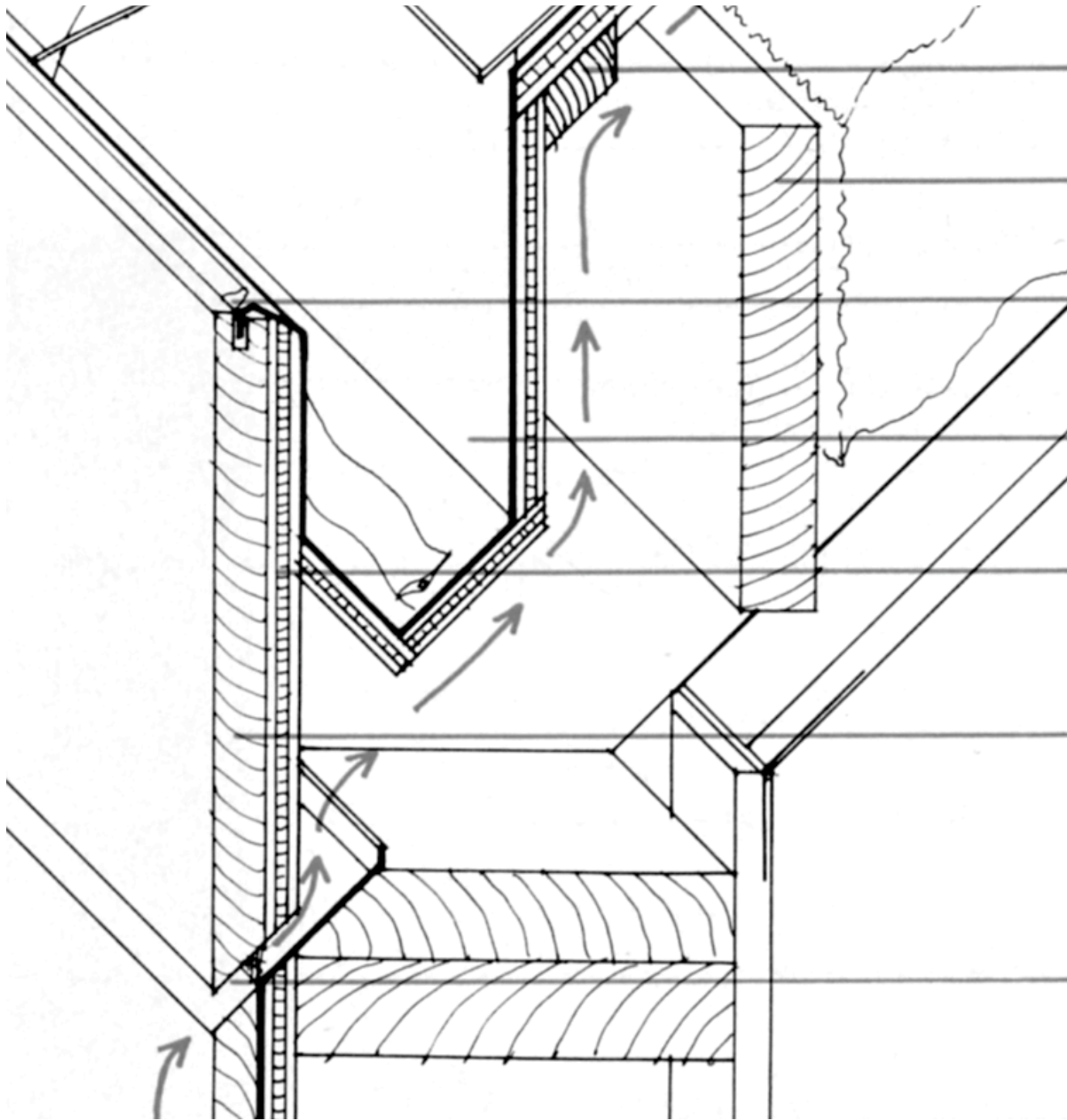


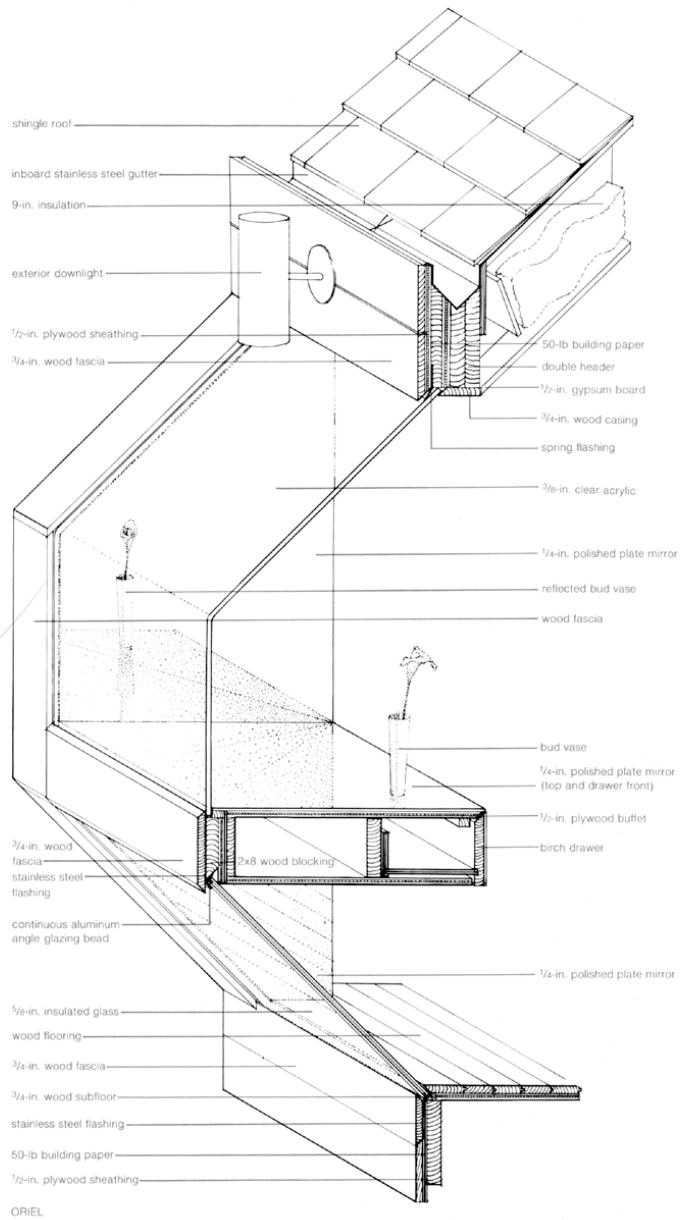
Hugh Newell Jacobson,  
Architect

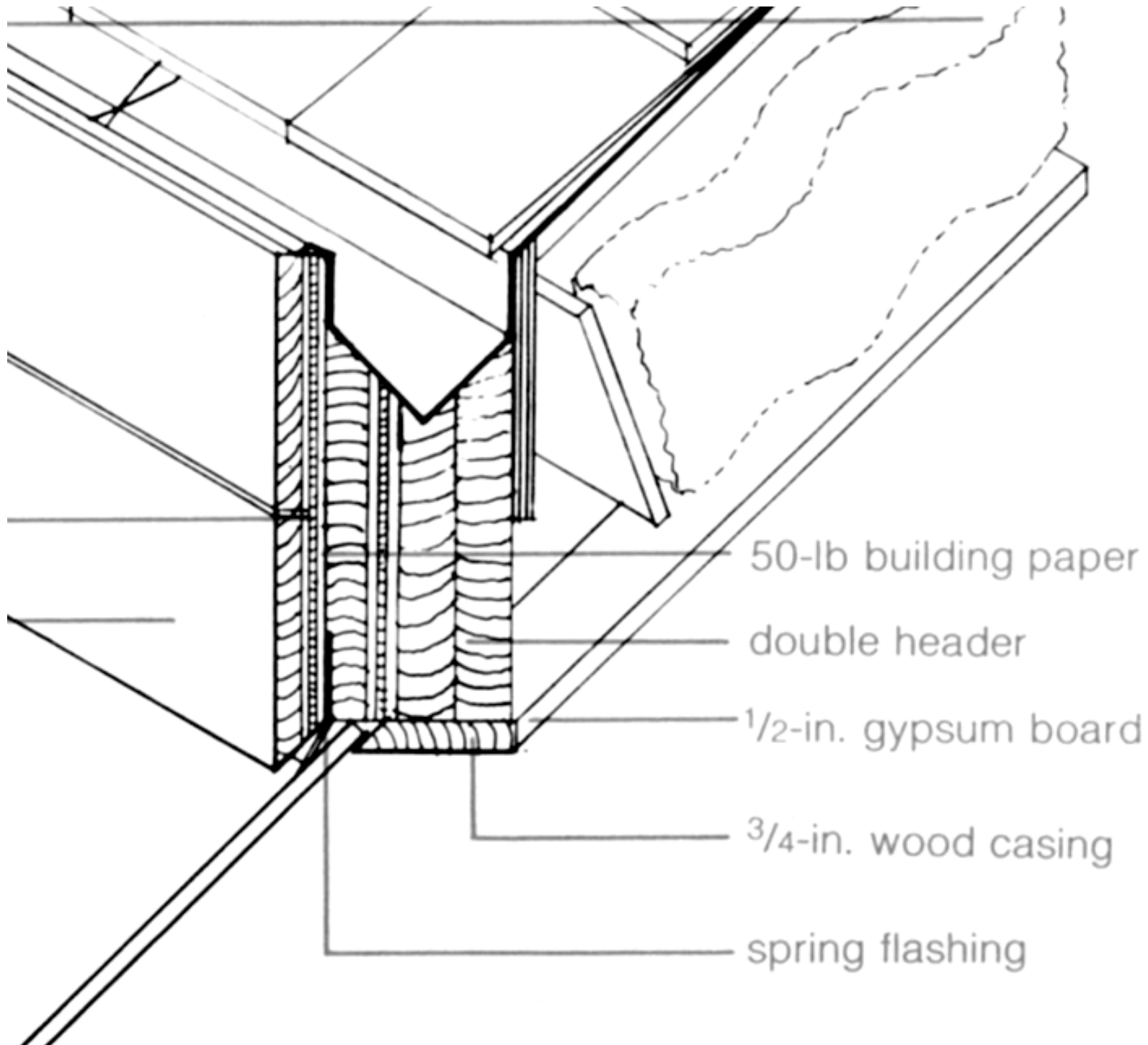


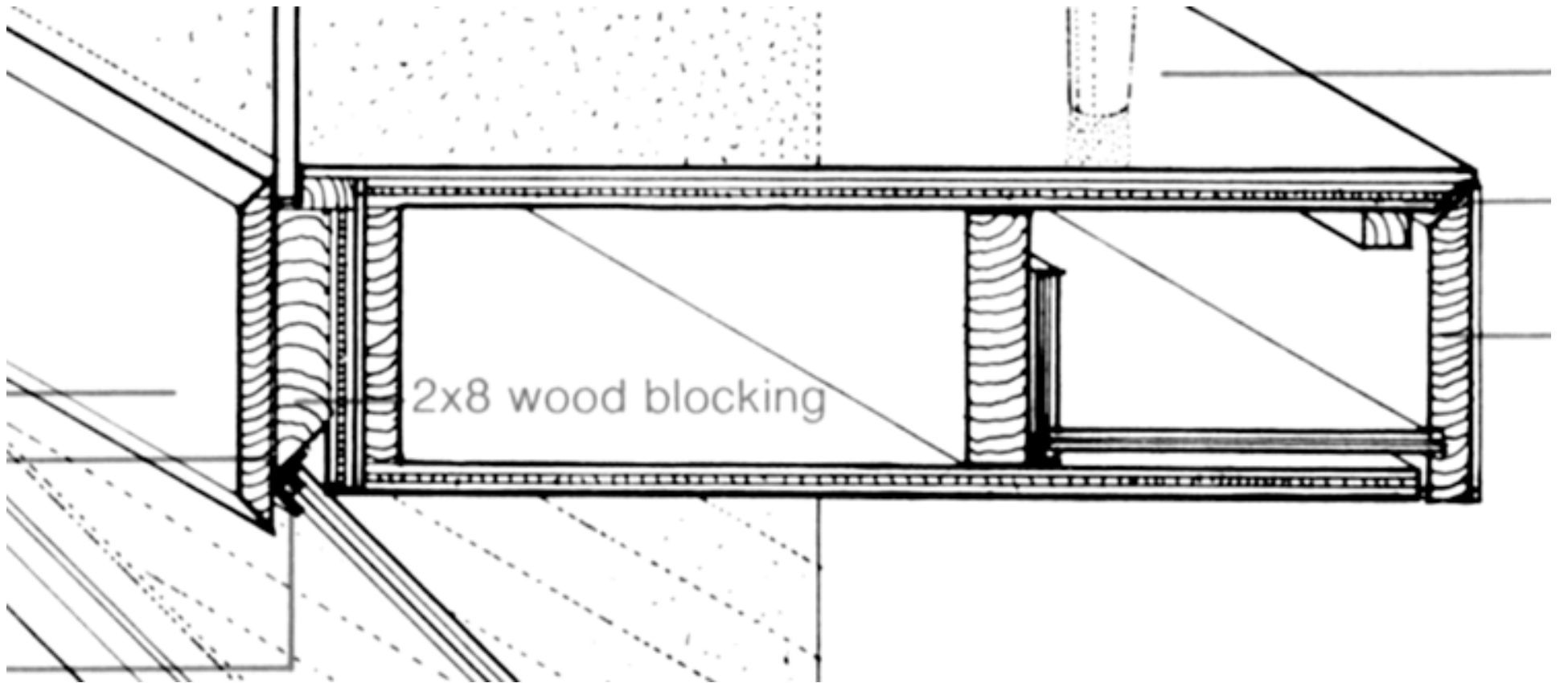


AXONOMETRIC SECTIONAL DETAIL OF CONCEALED GUTTER

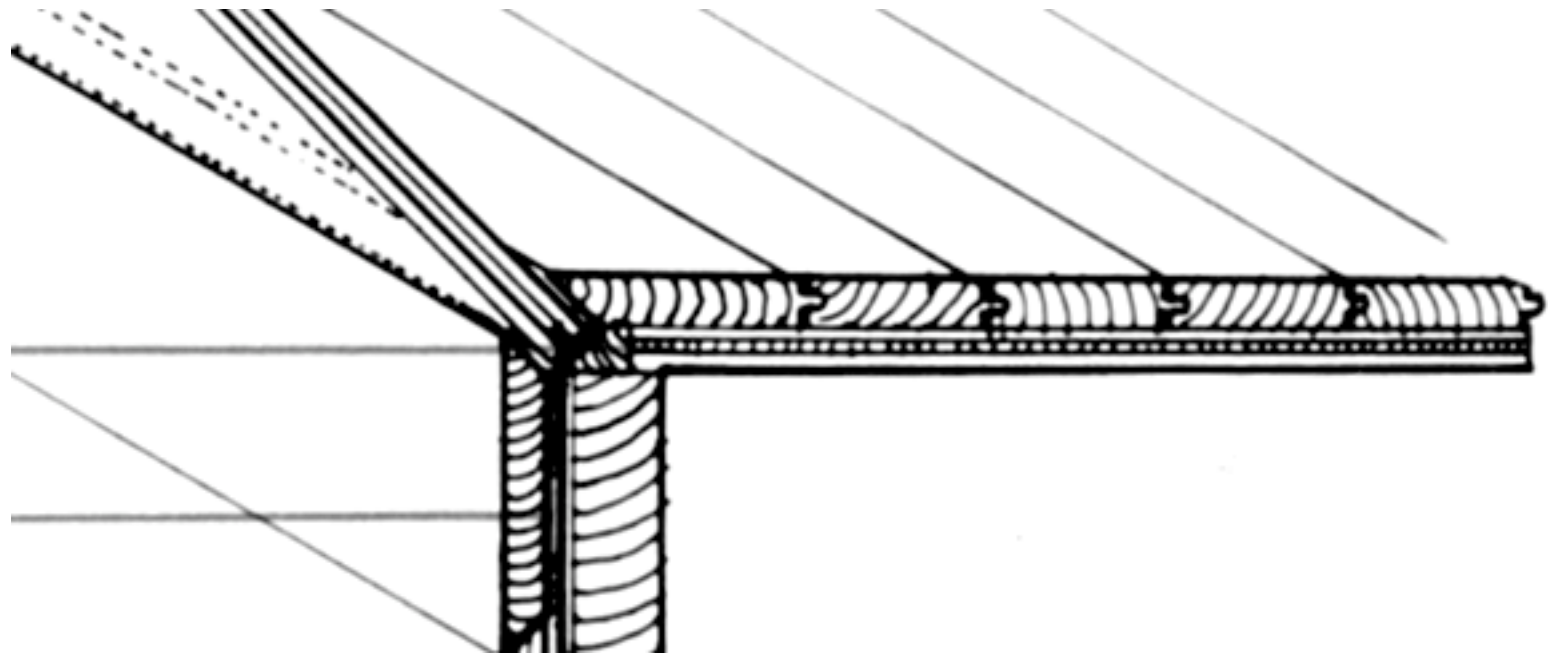


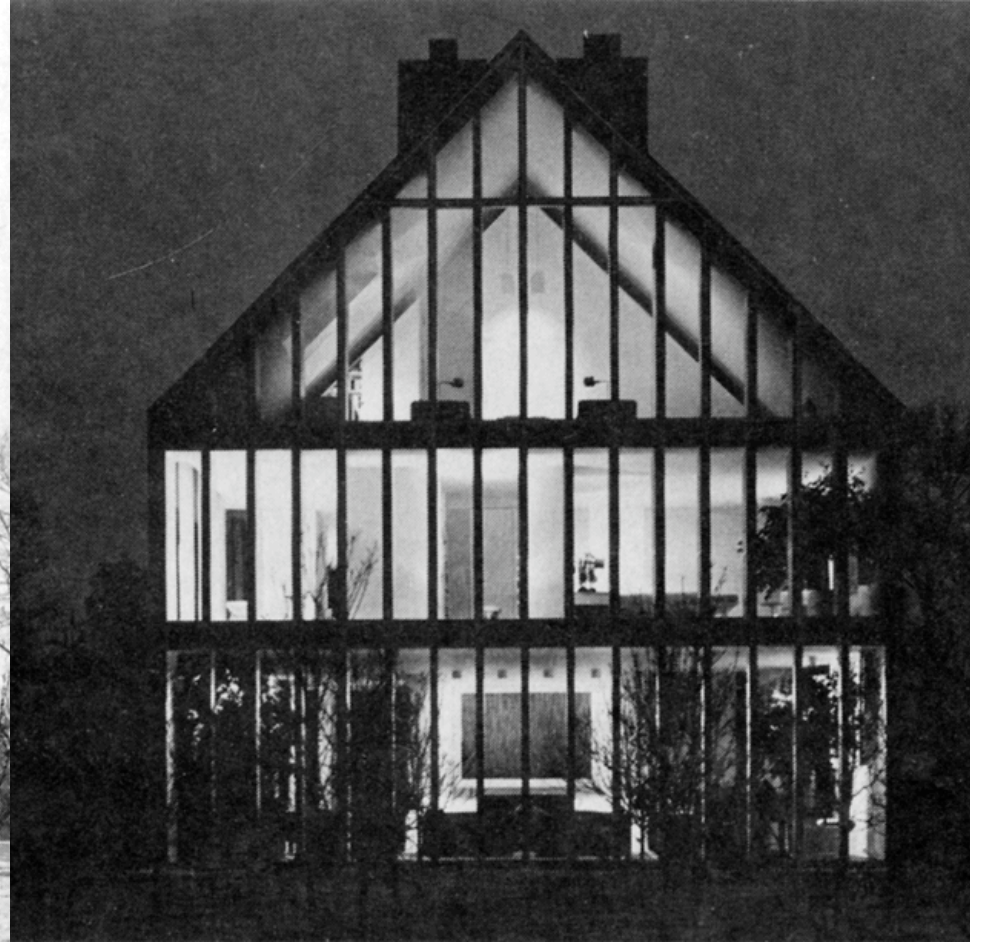
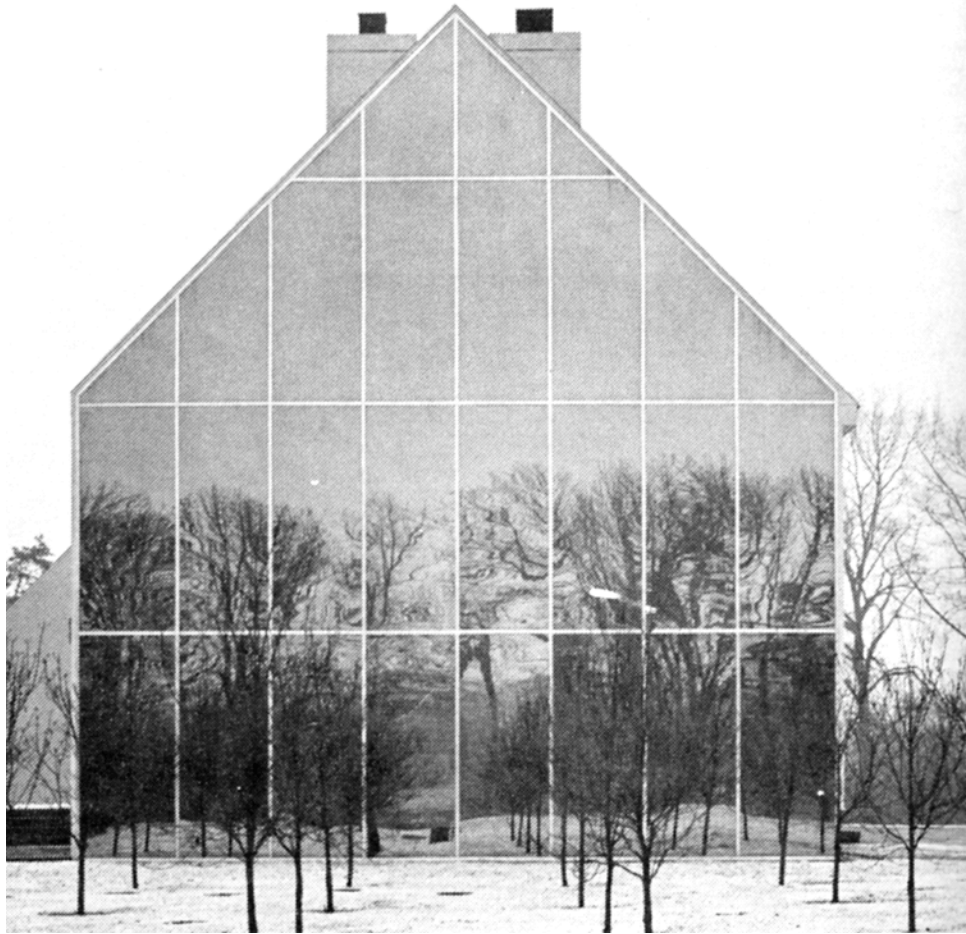


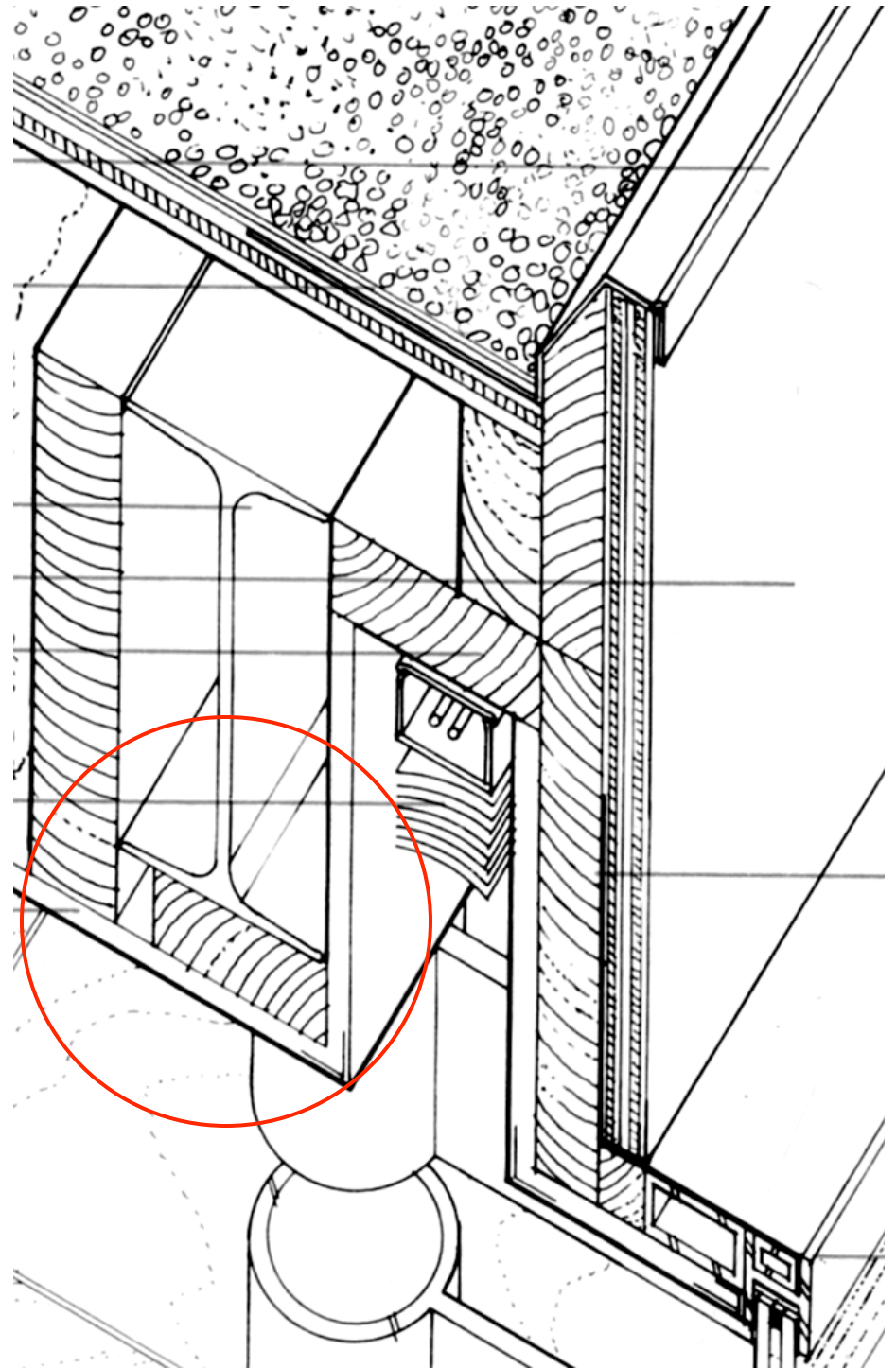
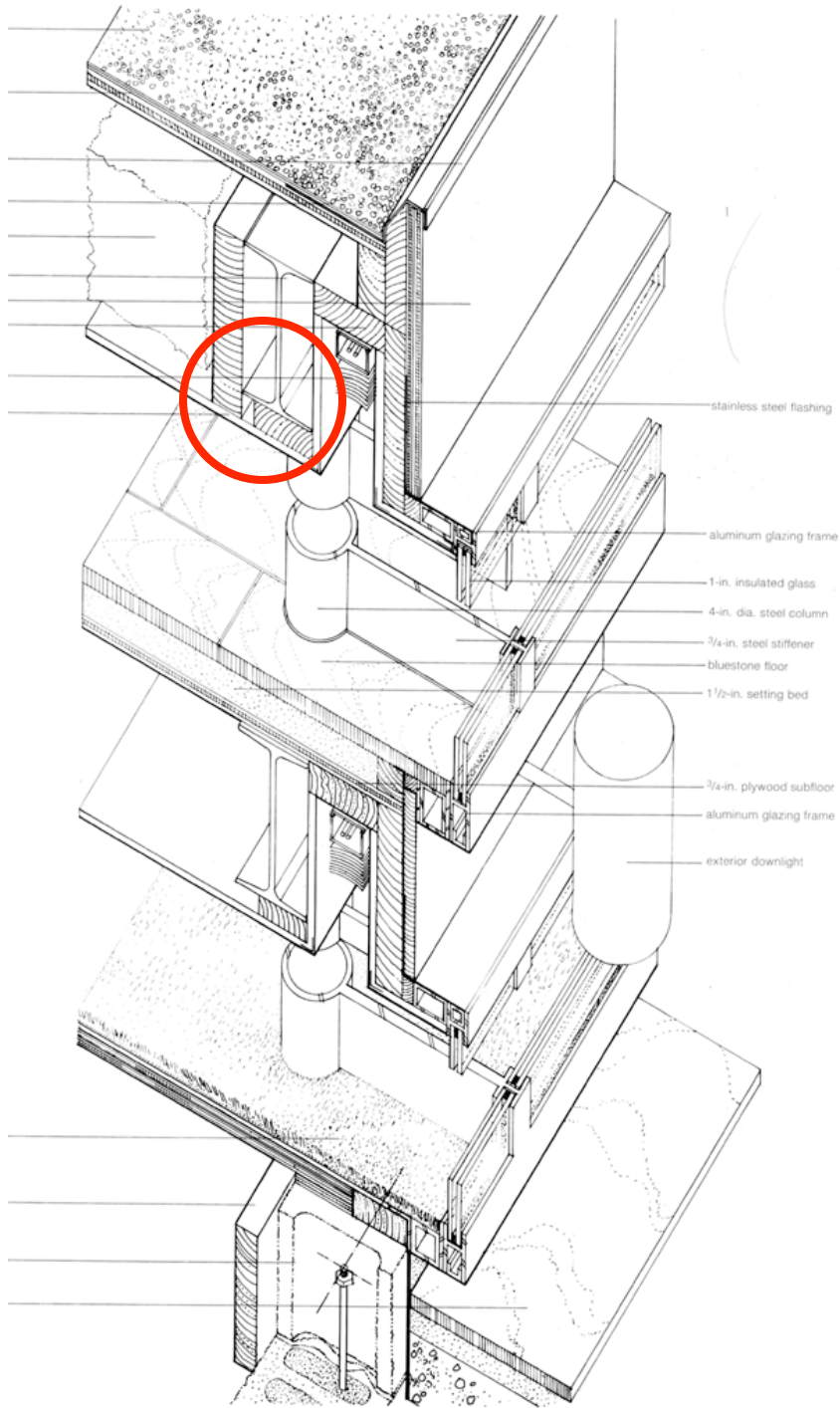


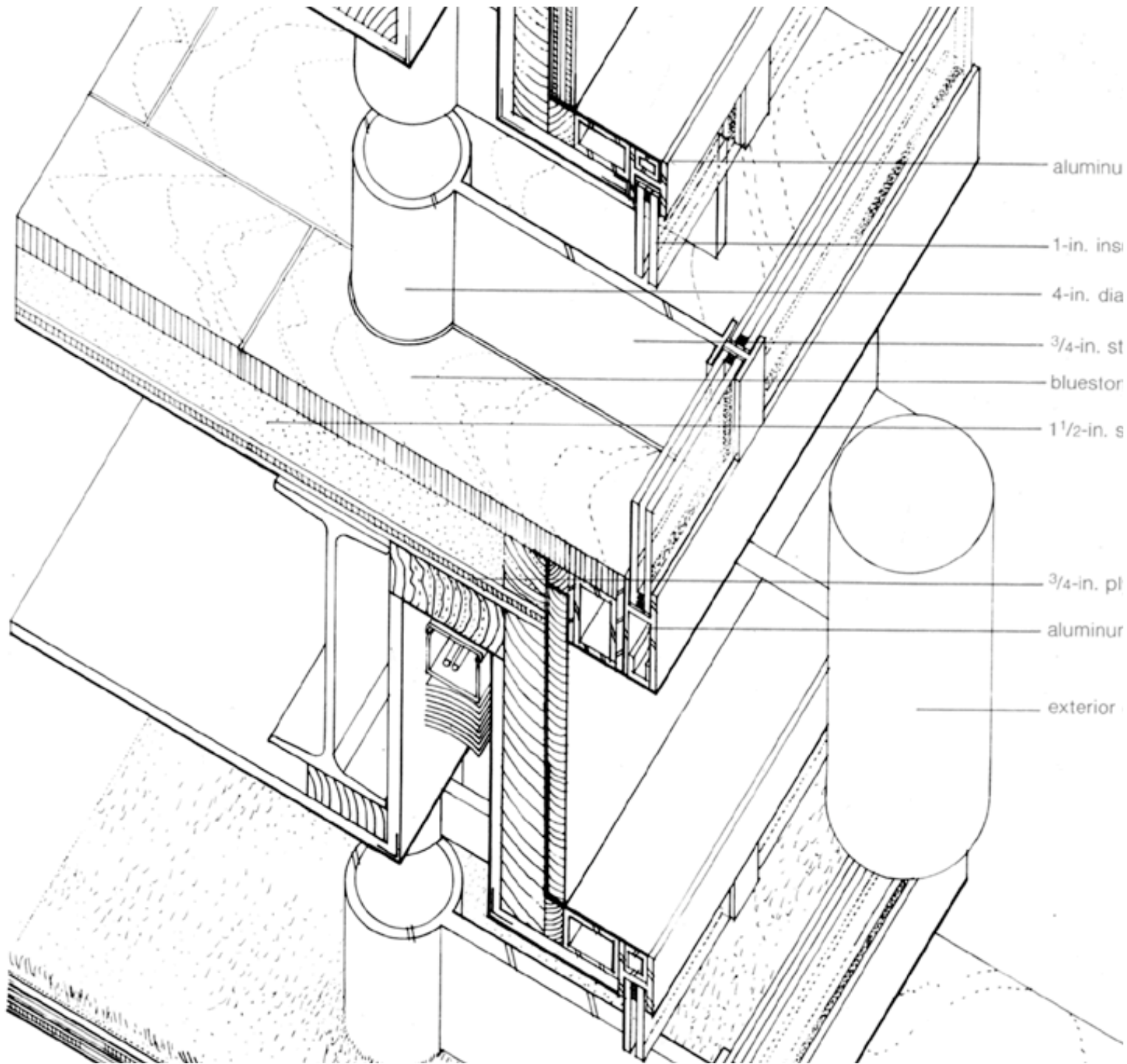


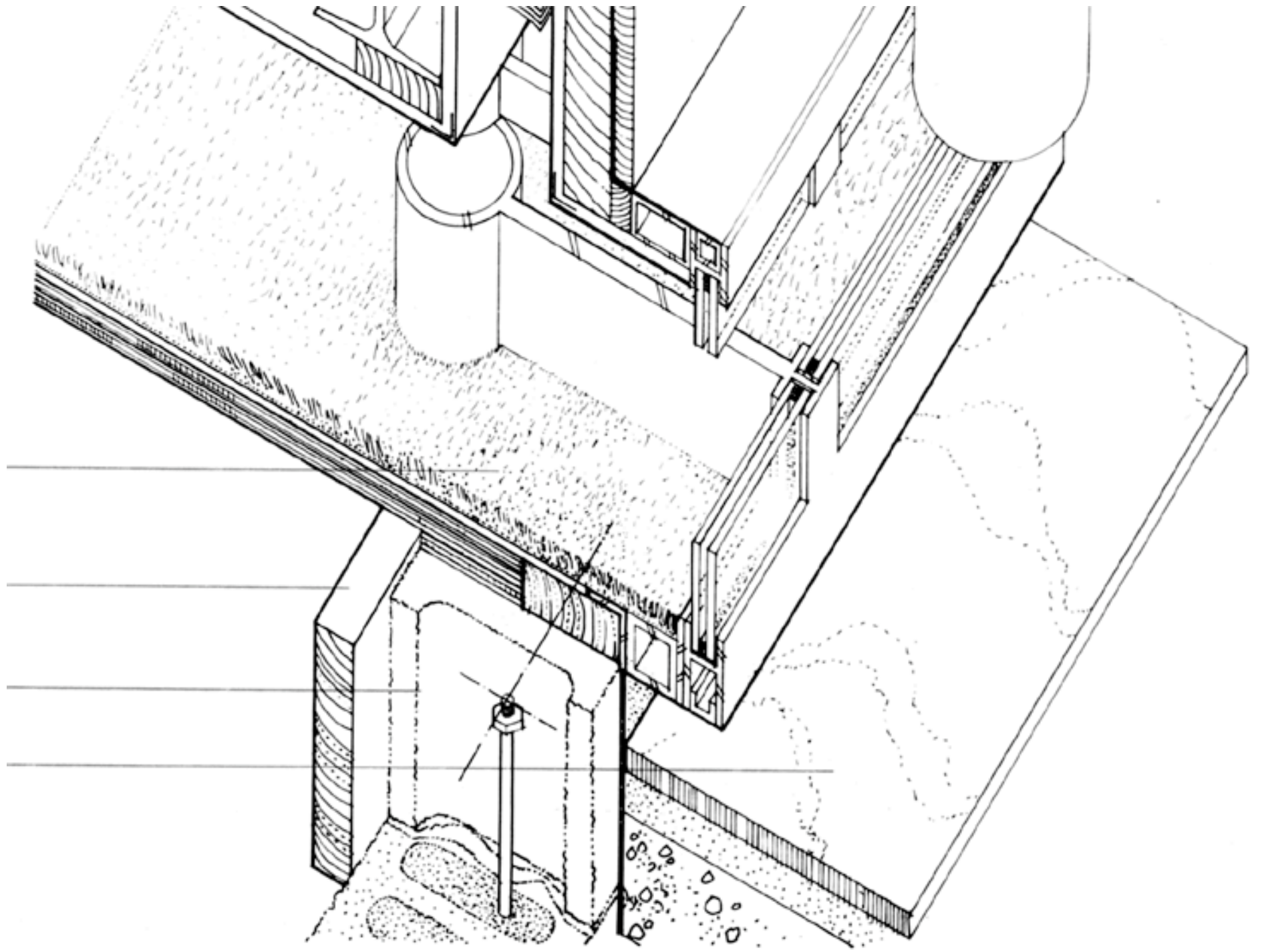
2x8 wood blocking

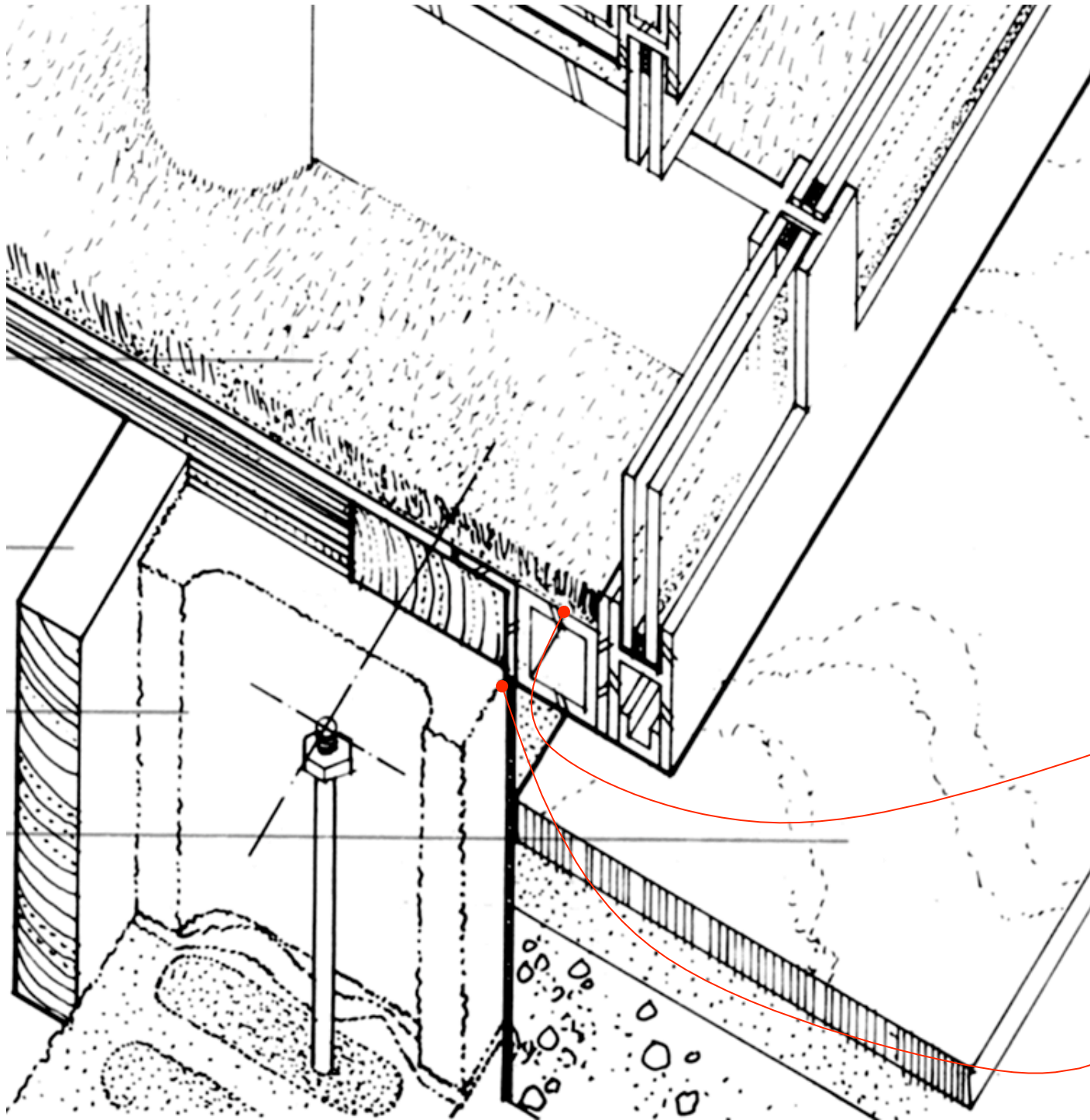






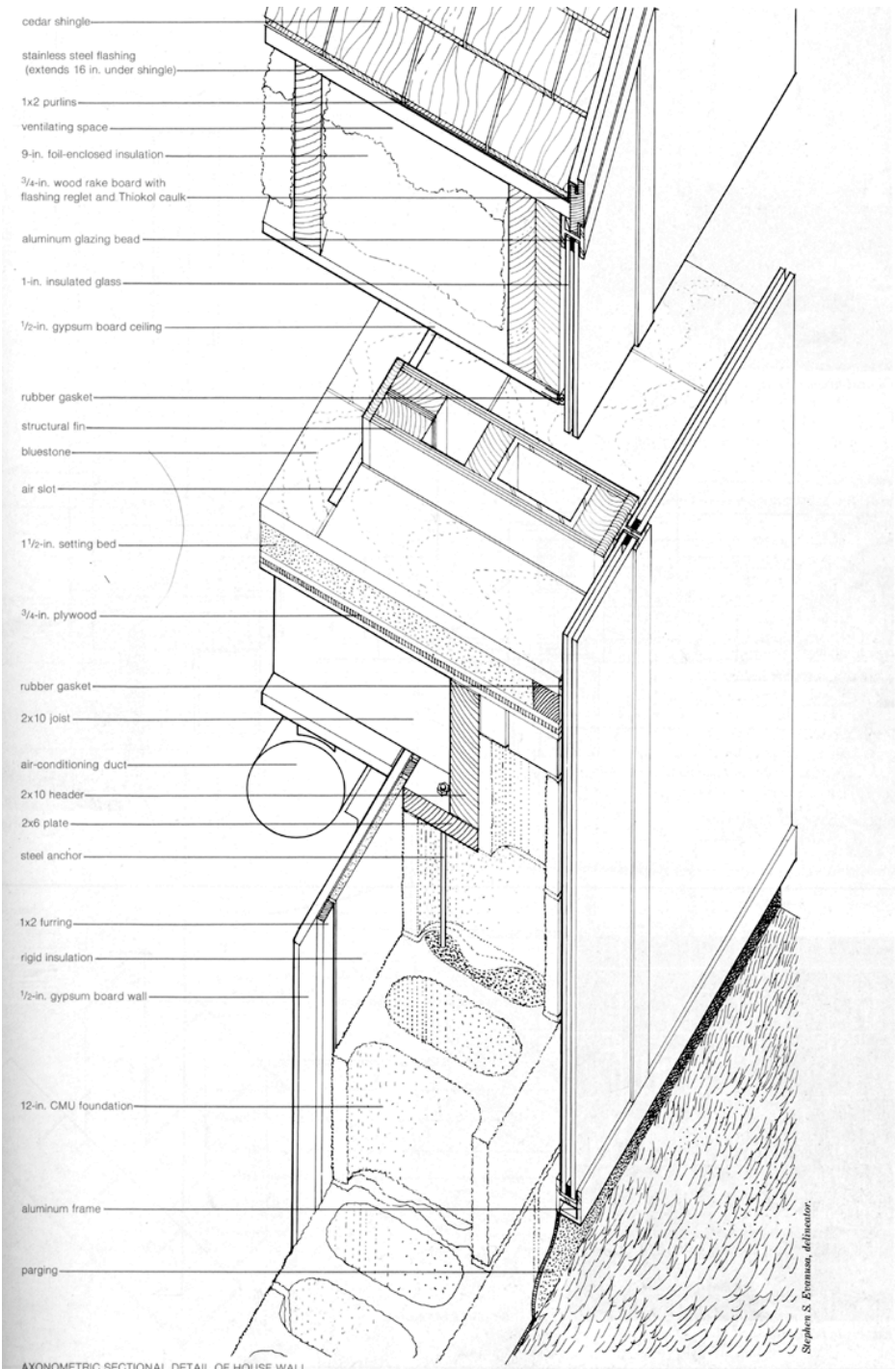




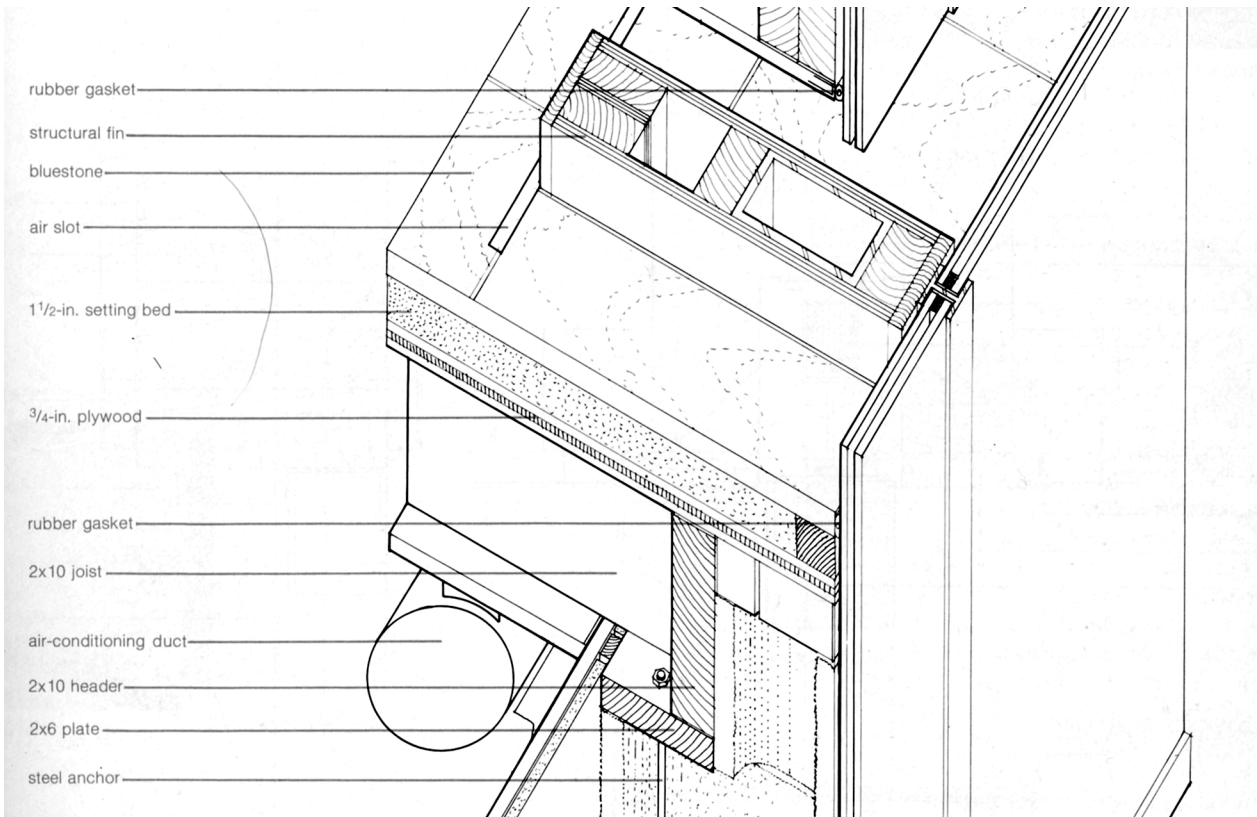


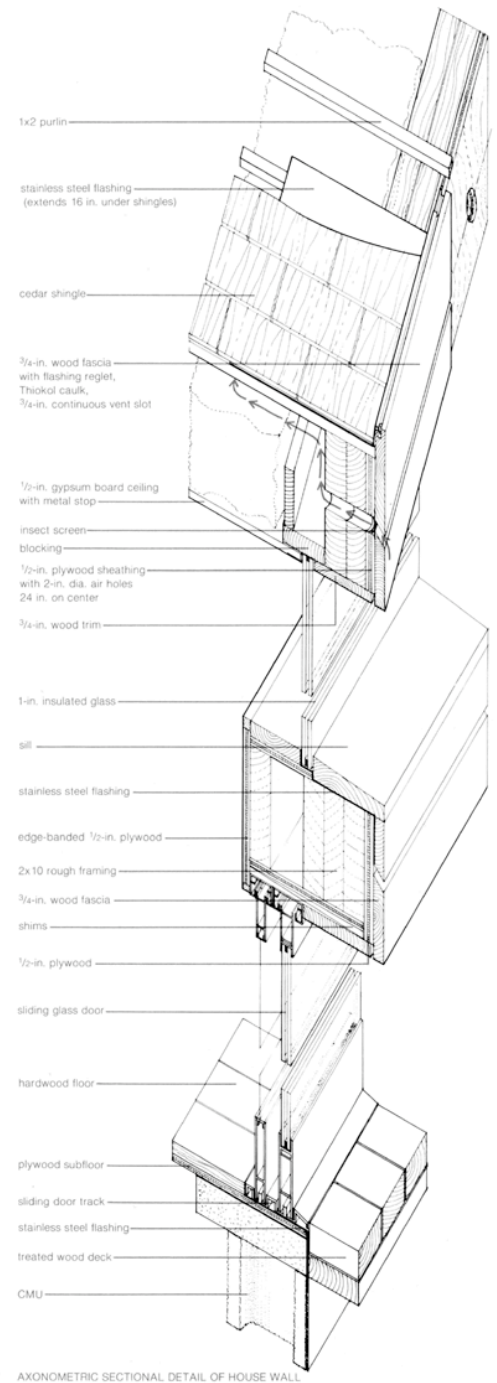
Future mold /  
mildew habitat

Future leak



AXONOMETRIC SECTIONAL DETAIL OF HOUSE WALL





AXONOMETRIC SECTIONAL DETAIL OF HOUSE WALL

stainless steel flashing  
(extends 16 in. under shingles)

cedar shingle

3/4-in. wood fascia  
with flashing reglet,  
Thiokol caulk,  
3/4-in. continuous vent slot

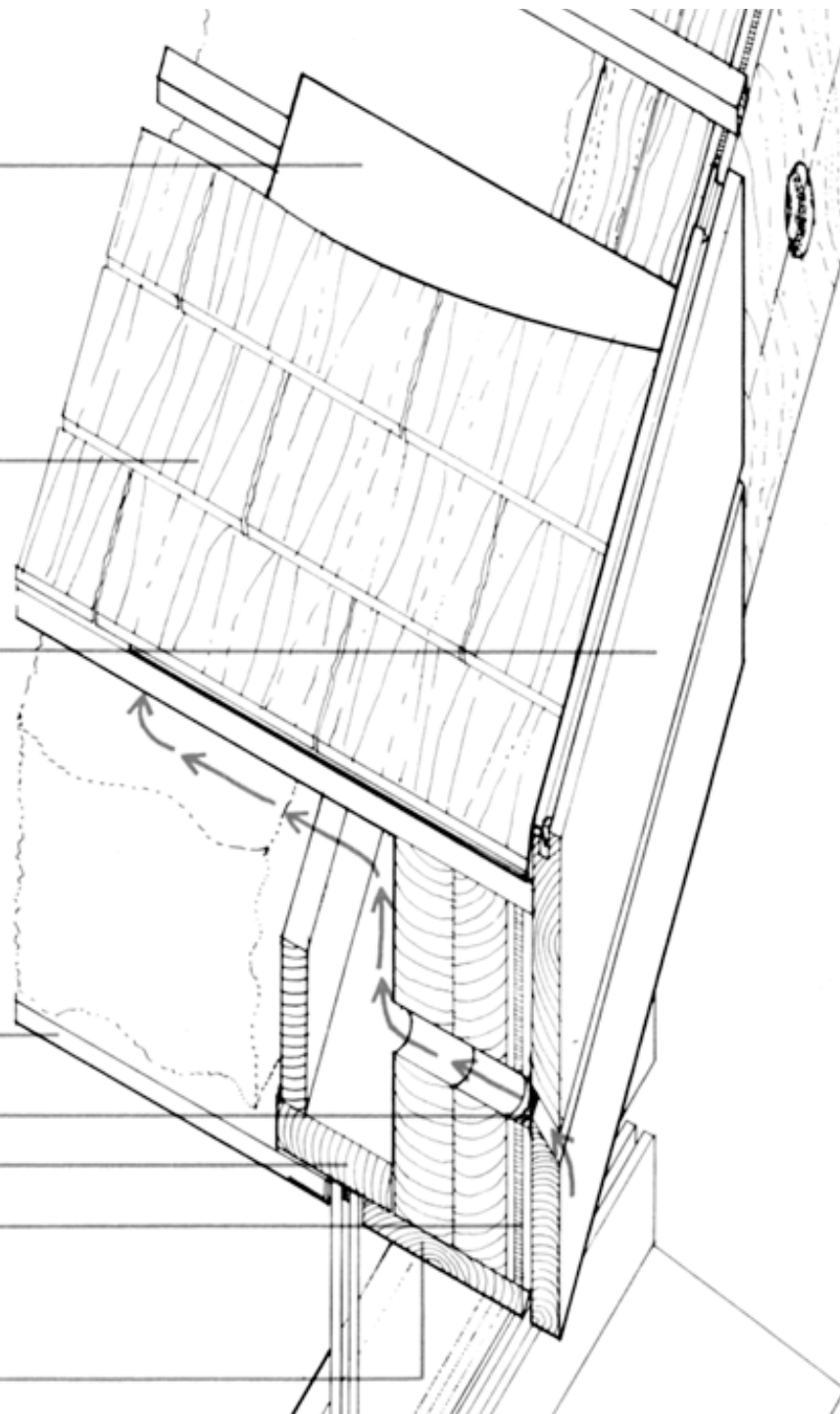
1/2-in. gypsum board ceiling  
with metal stop

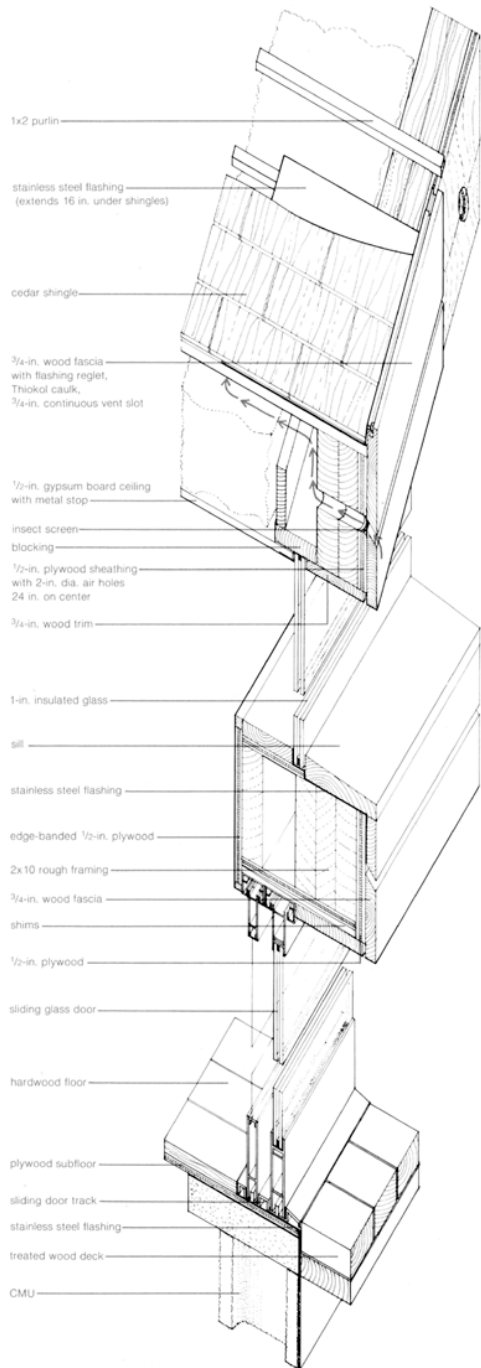
insect screen

blocking

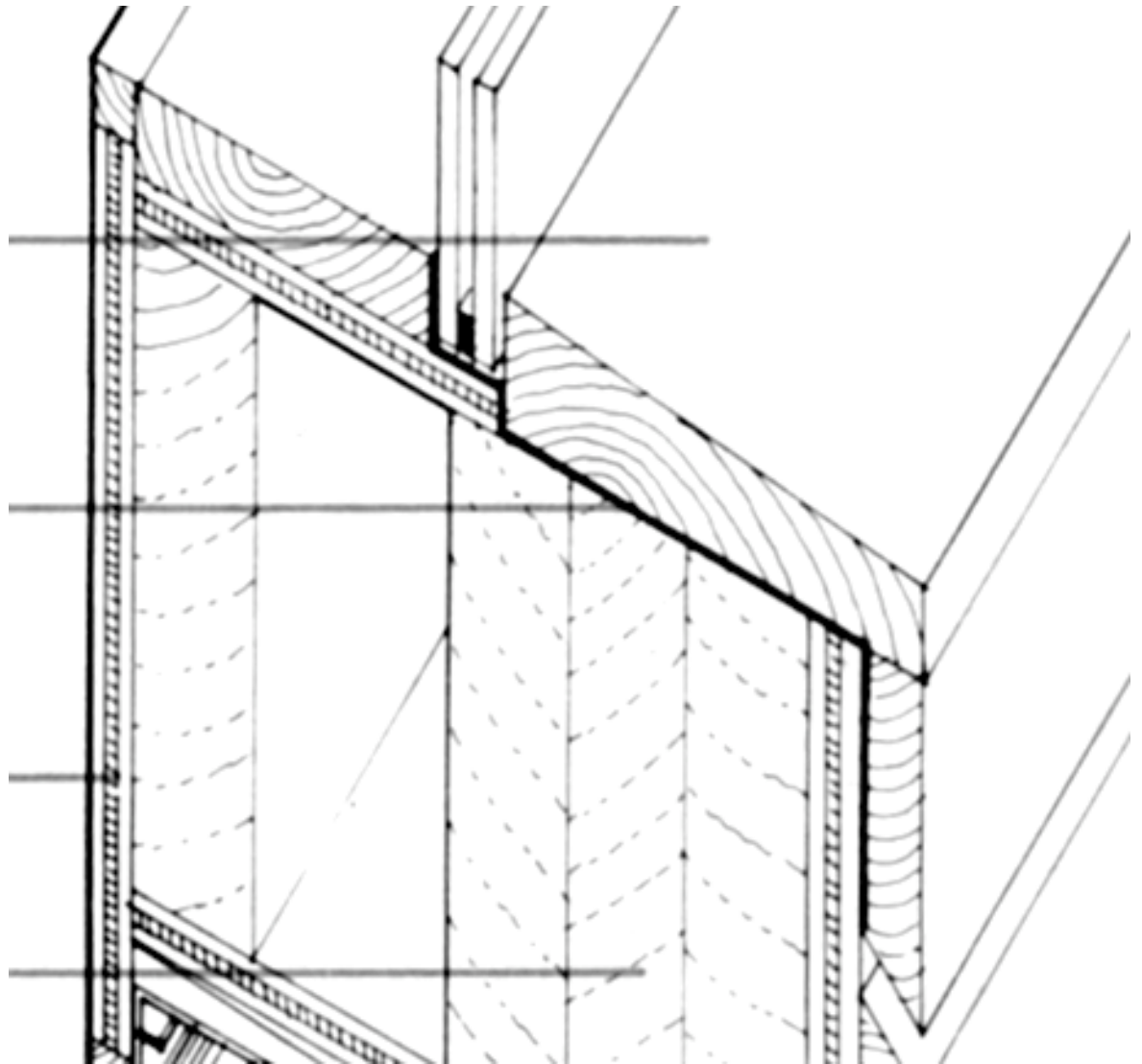
1/2-in. plywood sheathing  
with 2-in. dia. air holes  
24 in. on center

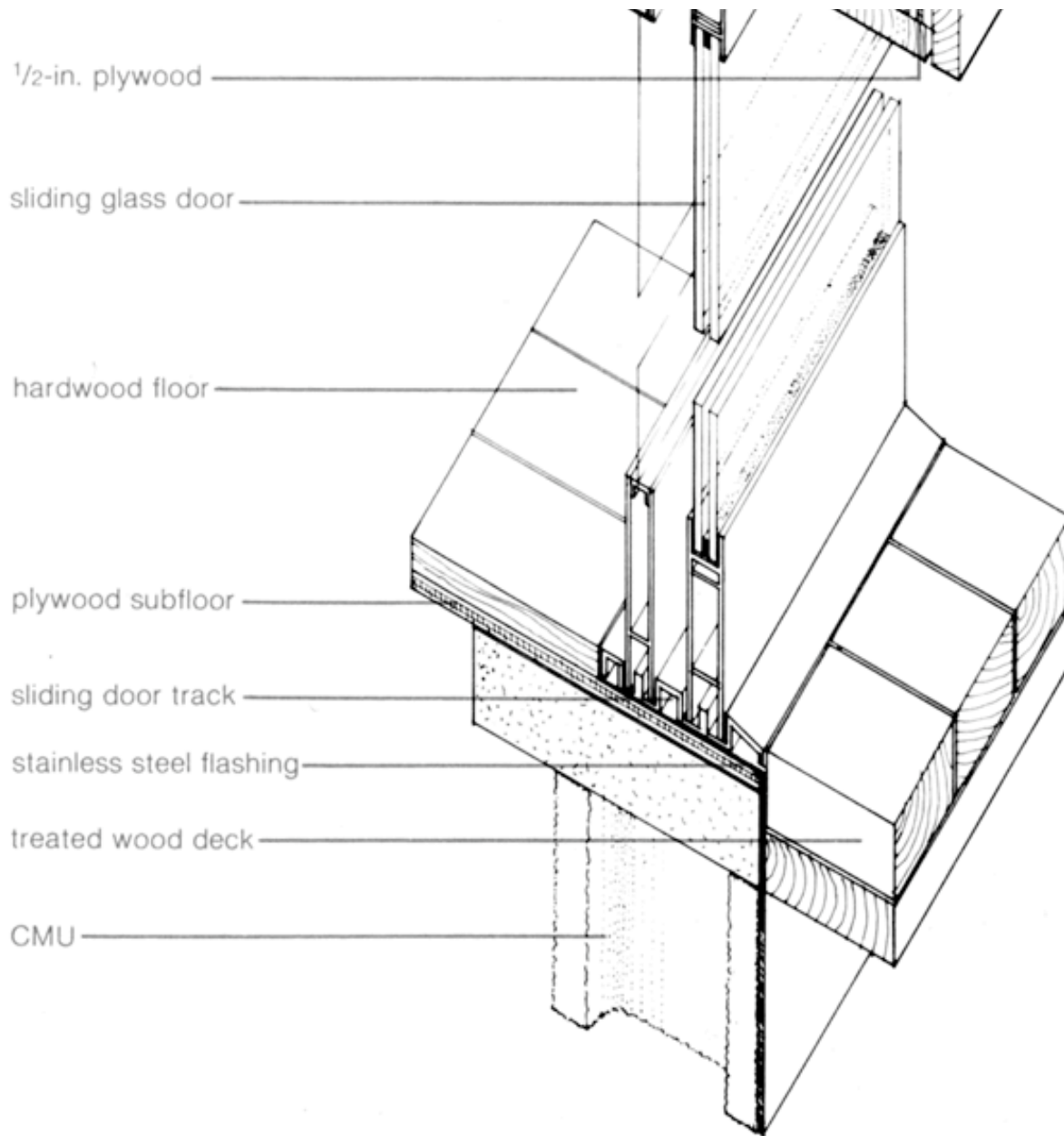
3/4-in. wood trim





AXONOMETRIC SECTIONAL DETAIL OF HOUSE WALL





AXONOMETRIC SECTIONAL DETAIL OF HOUSE WALL

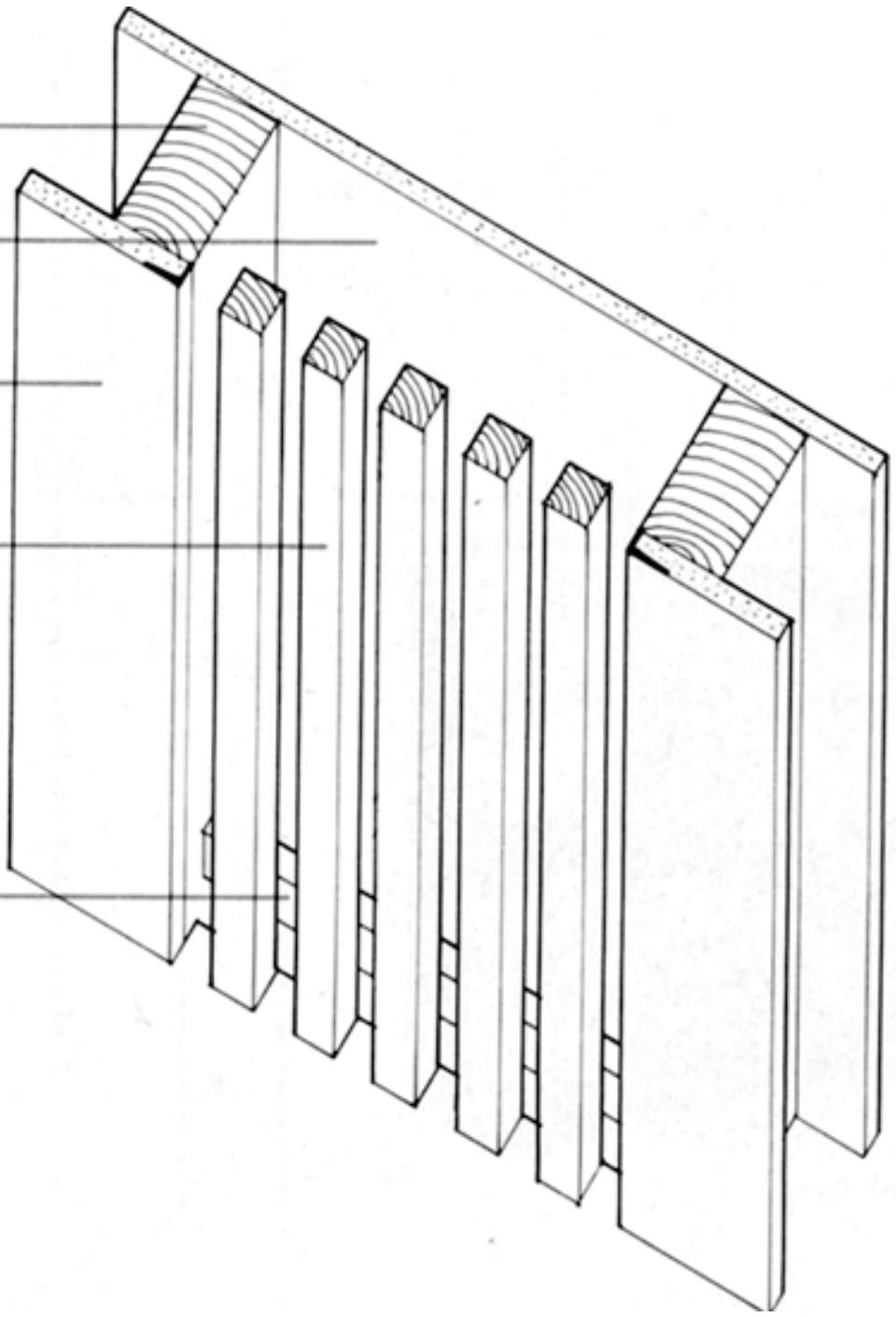
2x4 studs

interior, painted black

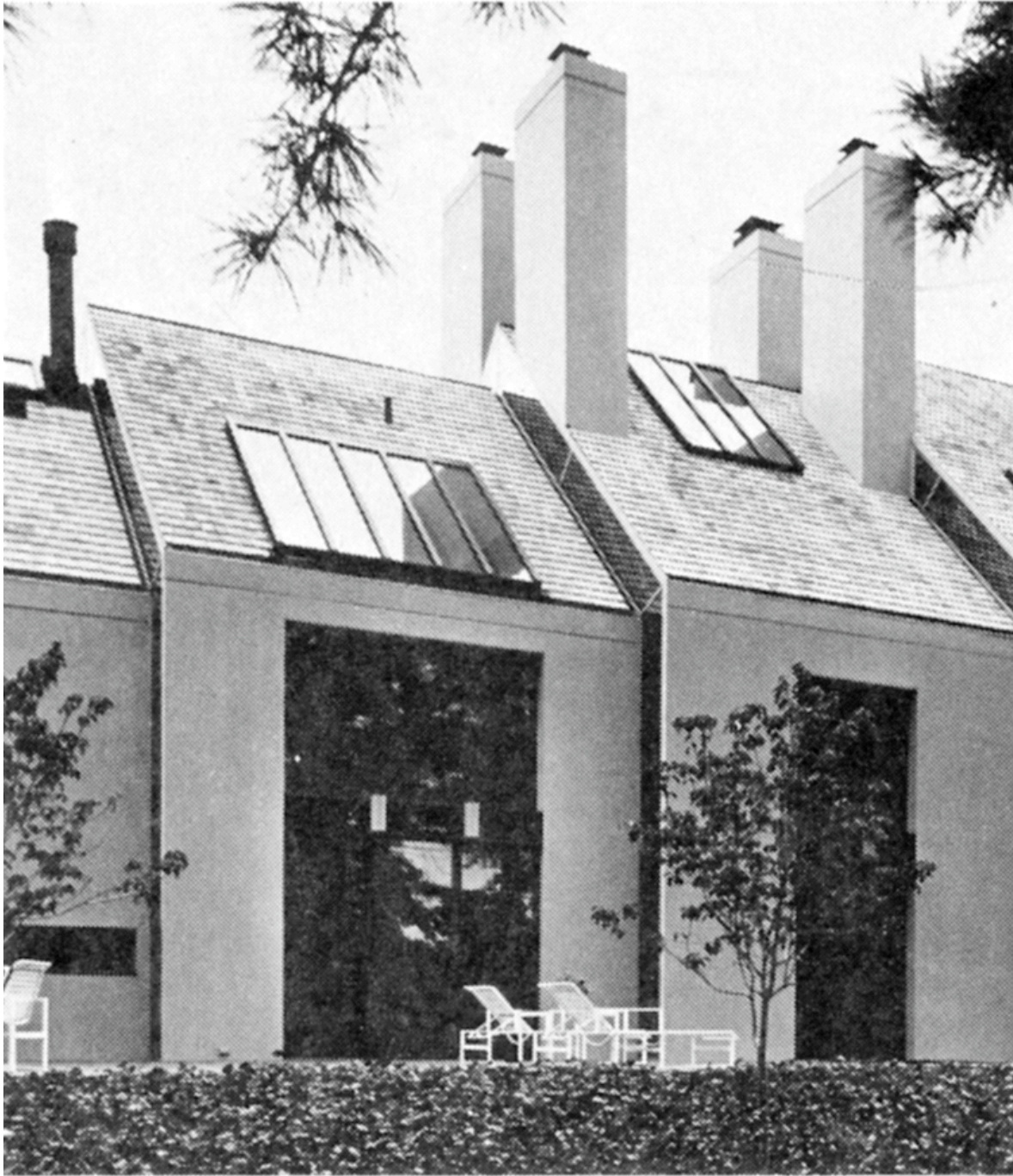
1/2-in. gypsum board  
with drywall beads

3/4-in. wood strips,  
spaced 3/4-in. apart

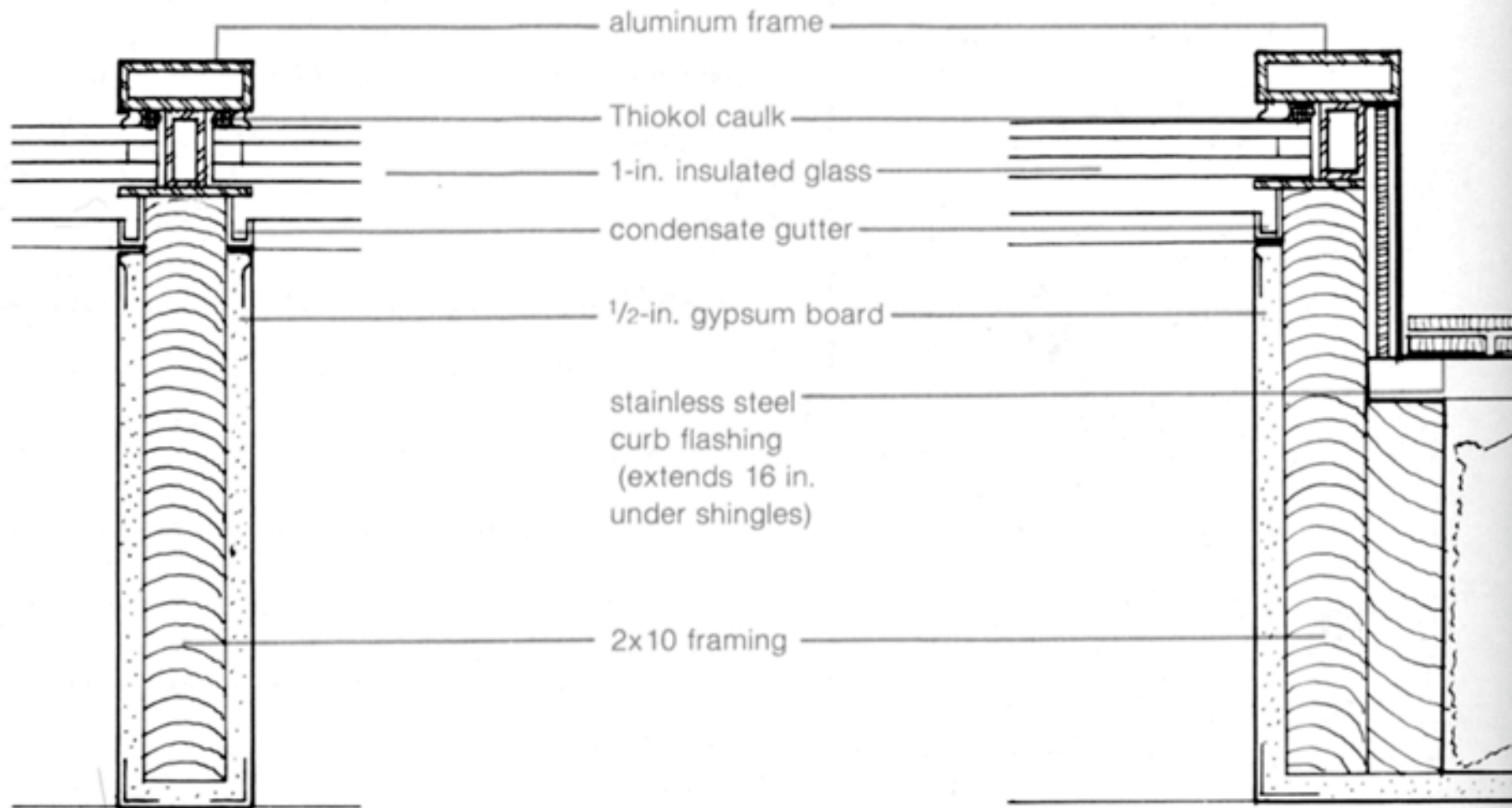
3/4-in. wood stretcher,  
painted black,  
with magnetic catch



RETURN AIR GRILLE

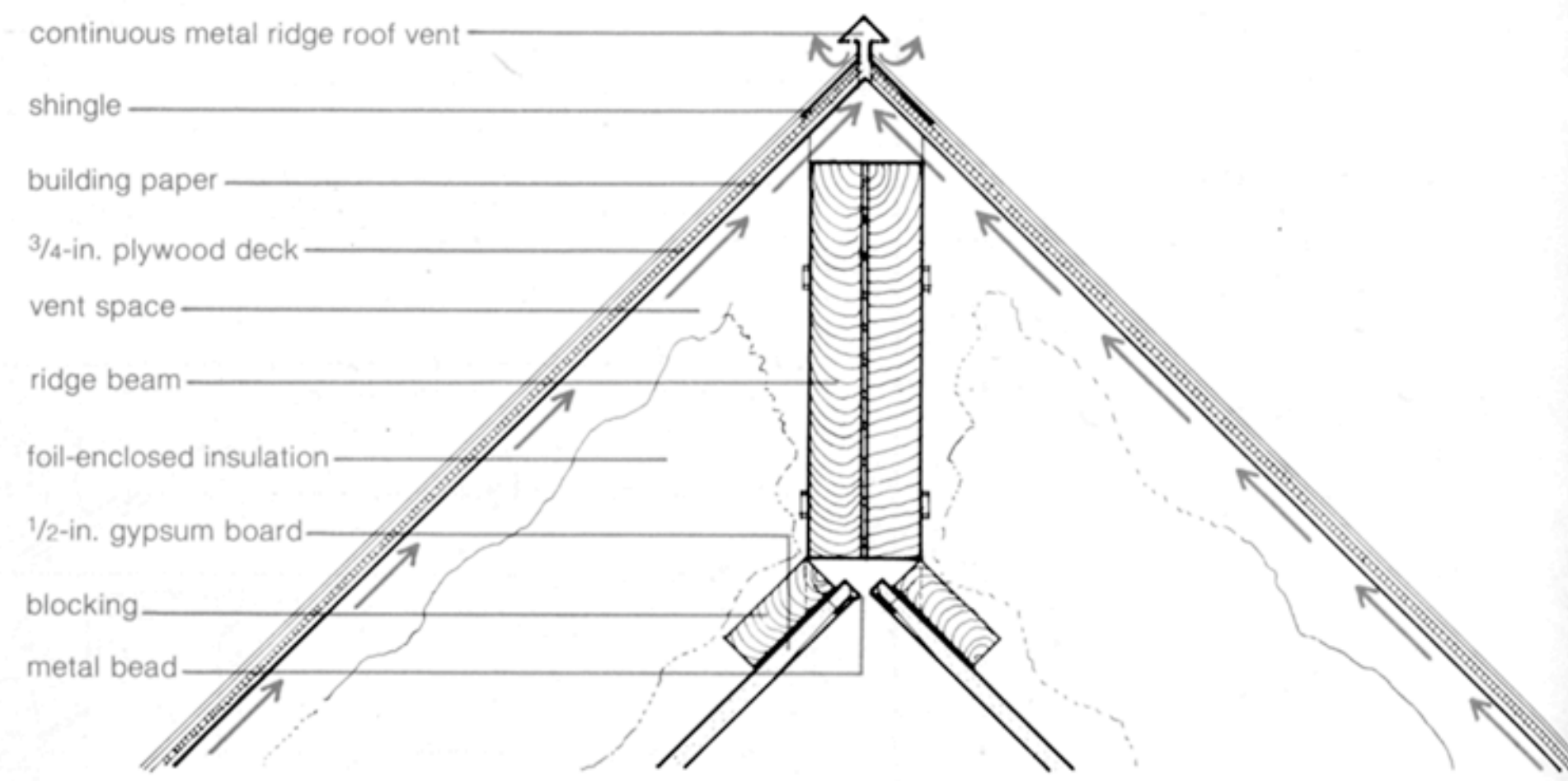


*Skylights*



SKYLIGHT





- continuous metal ridge roof vent
- shingle
- building paper
- 3/4-in. plywood deck
- vent space
- ridge beam
- foil-enclosed insulation
- 1/2-in. gypsum board
- blocking
- metal bead

RIDGE VENT

