















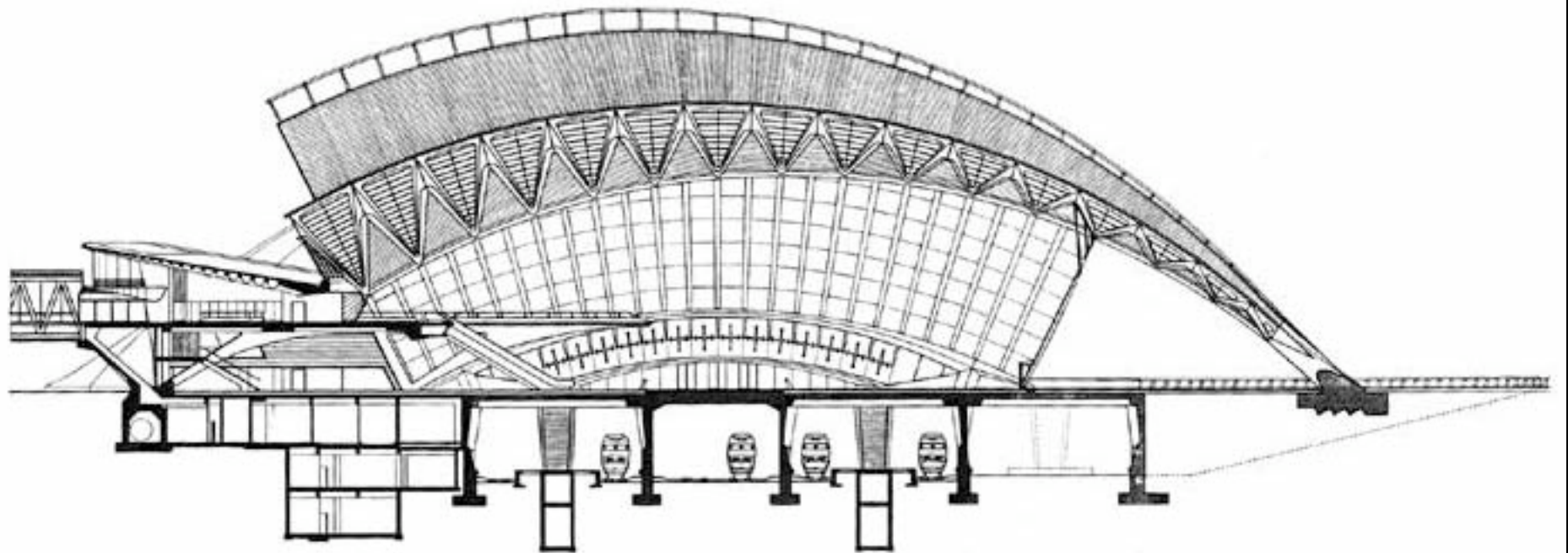






Lyon-Saint Exupery Airport Station

- Santiago Calatrava
- Construction 1989 - 1994
 - 100 meter span (328 feet)
 - 450 meters long (1,476 feet) ...
over 1/4 mile











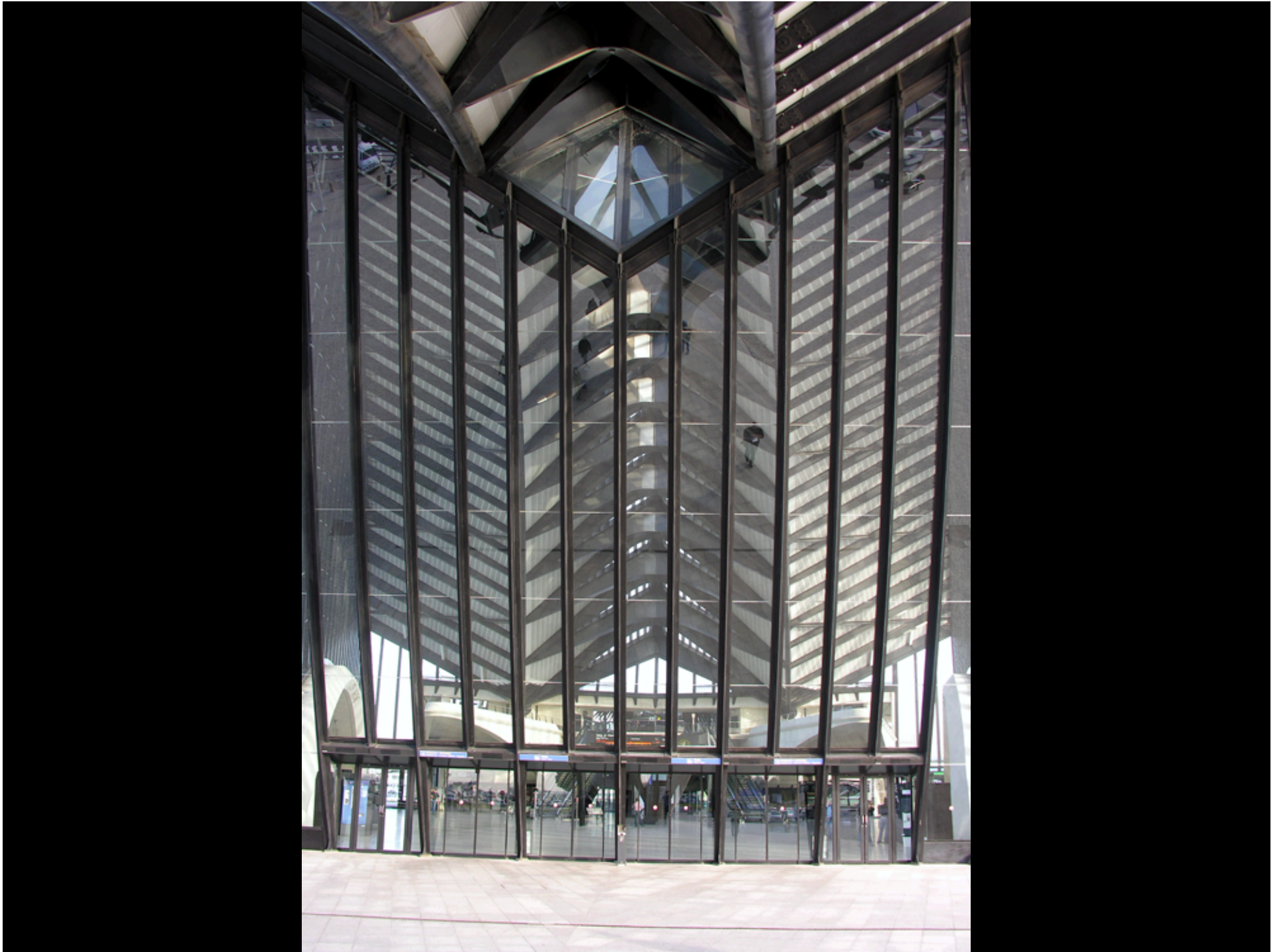










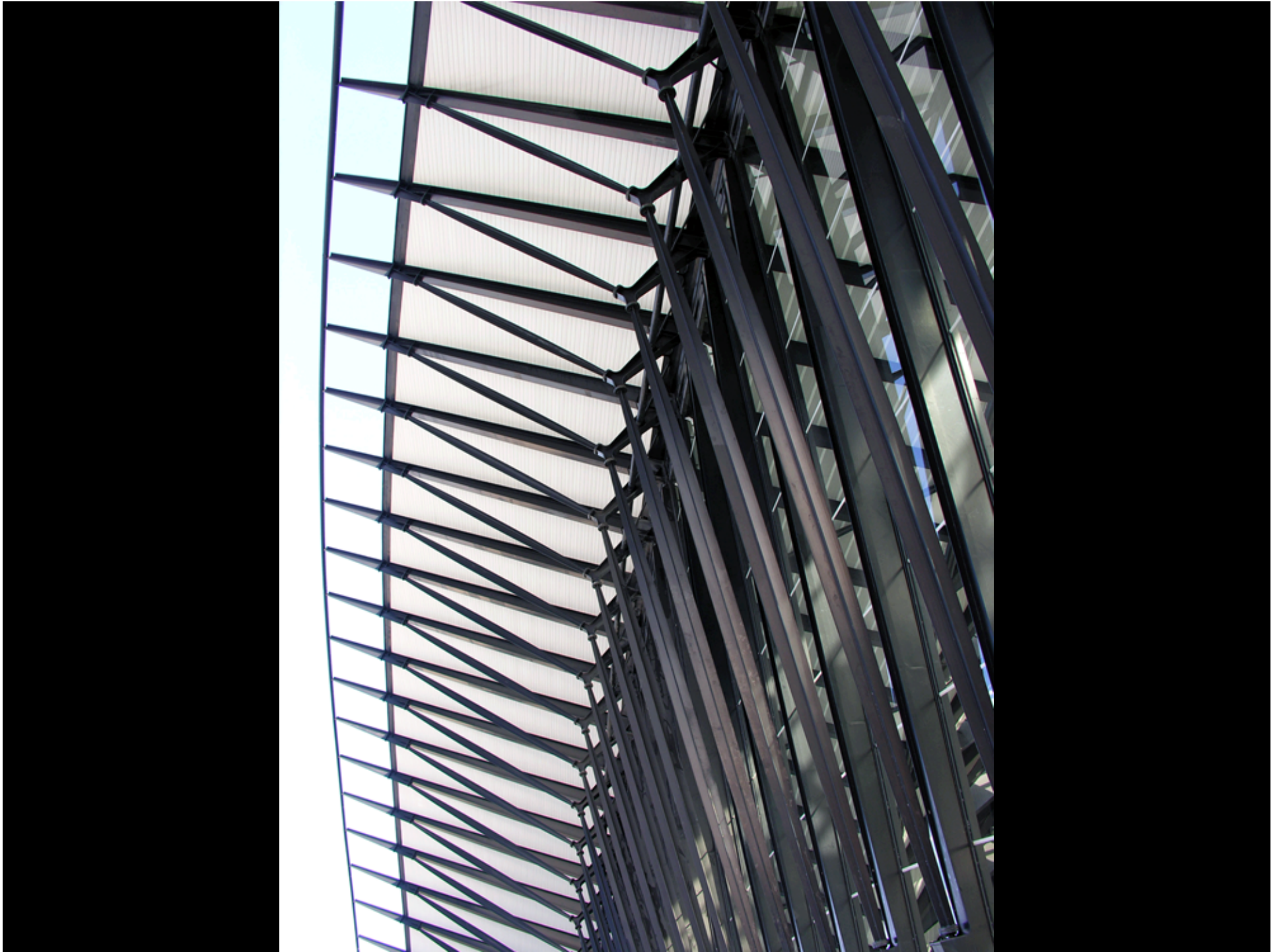


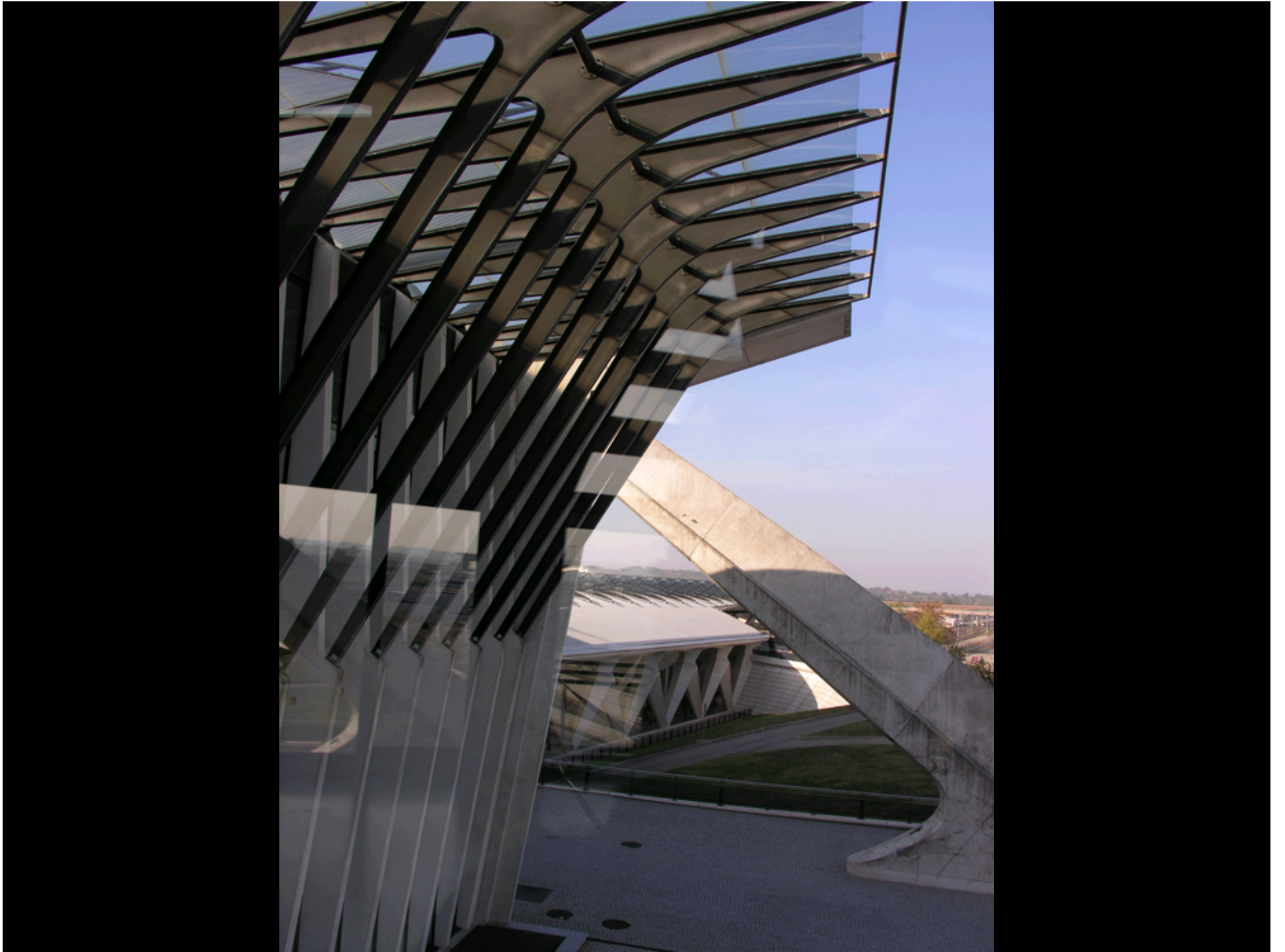




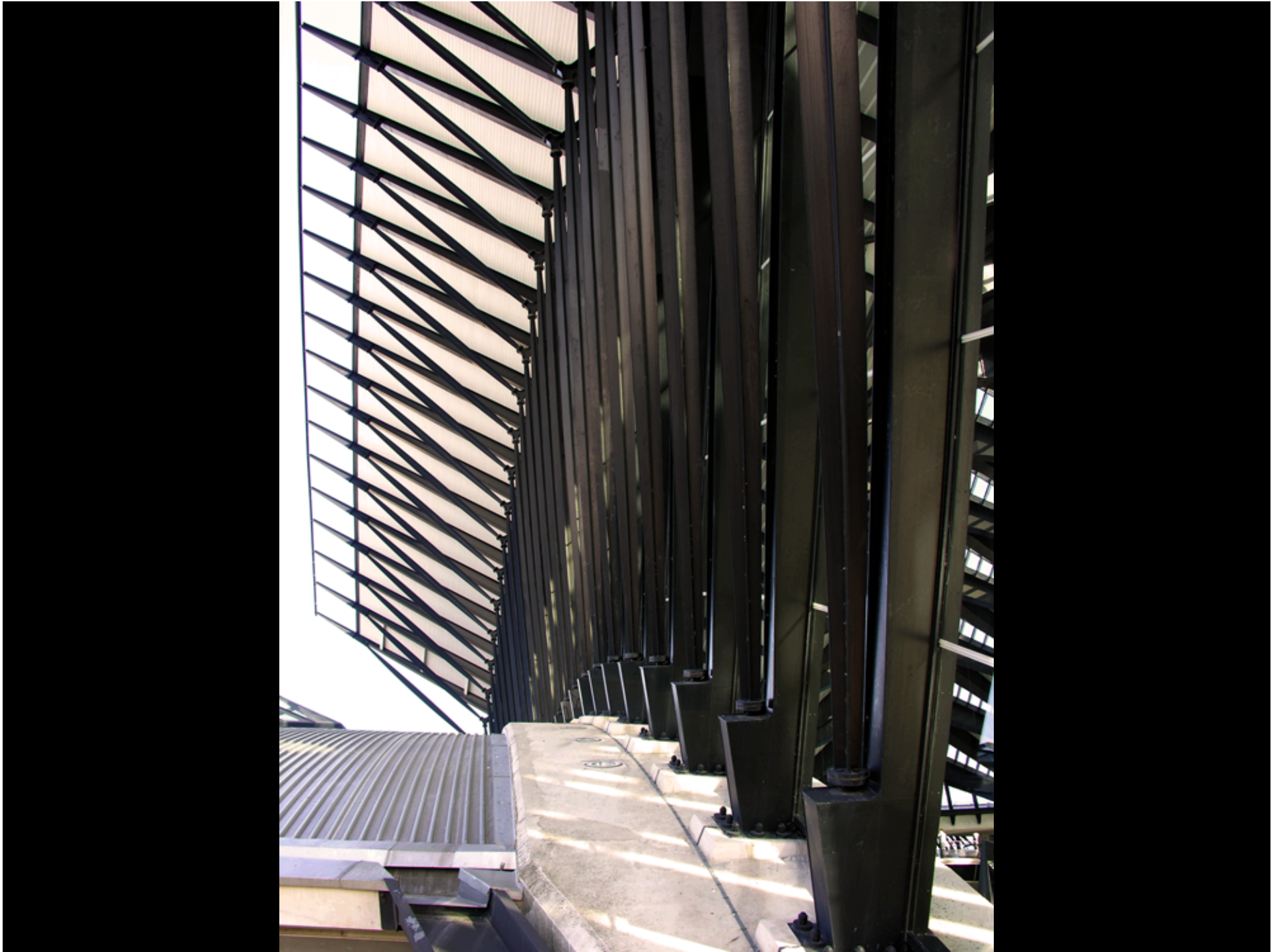








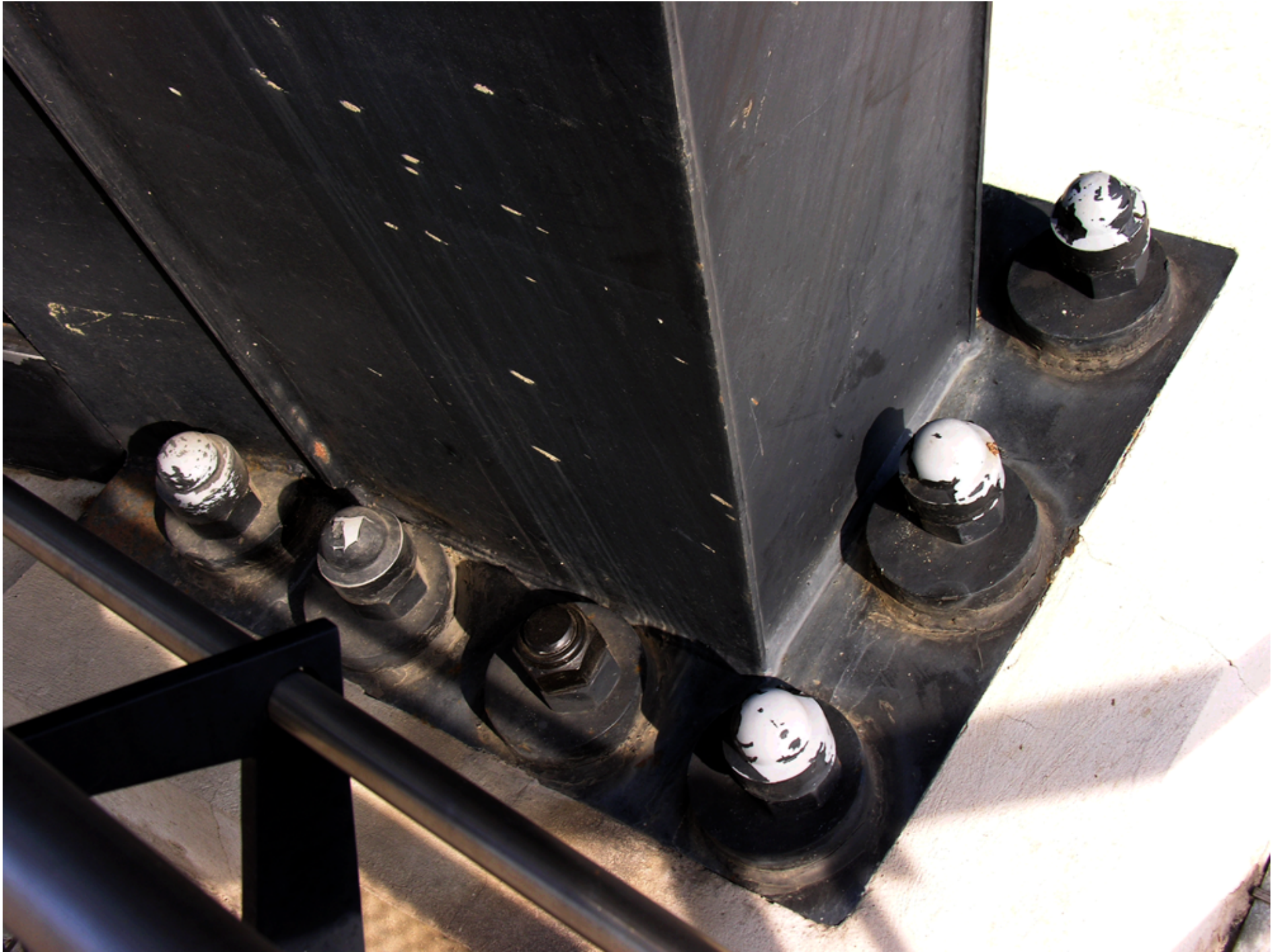










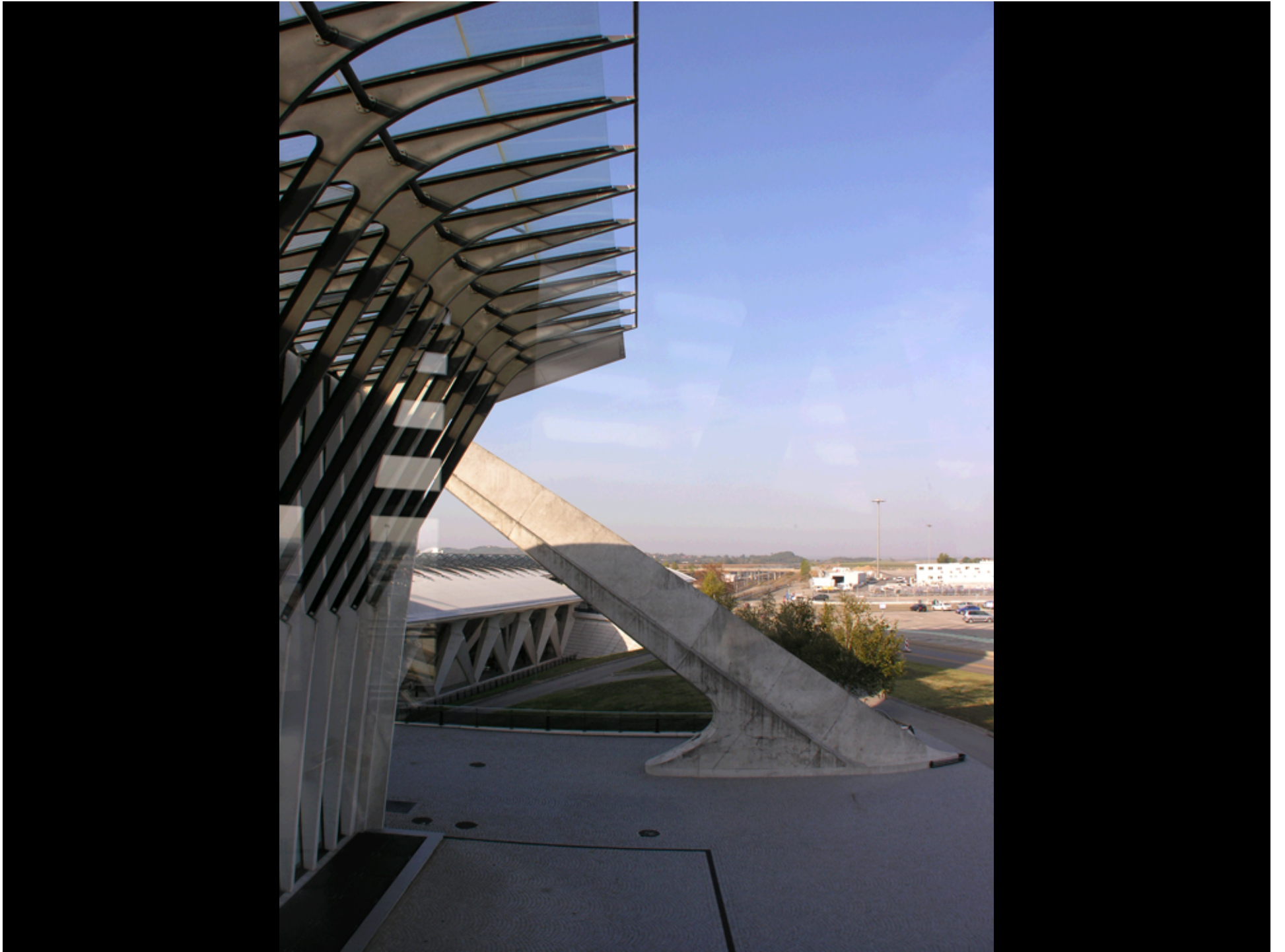




























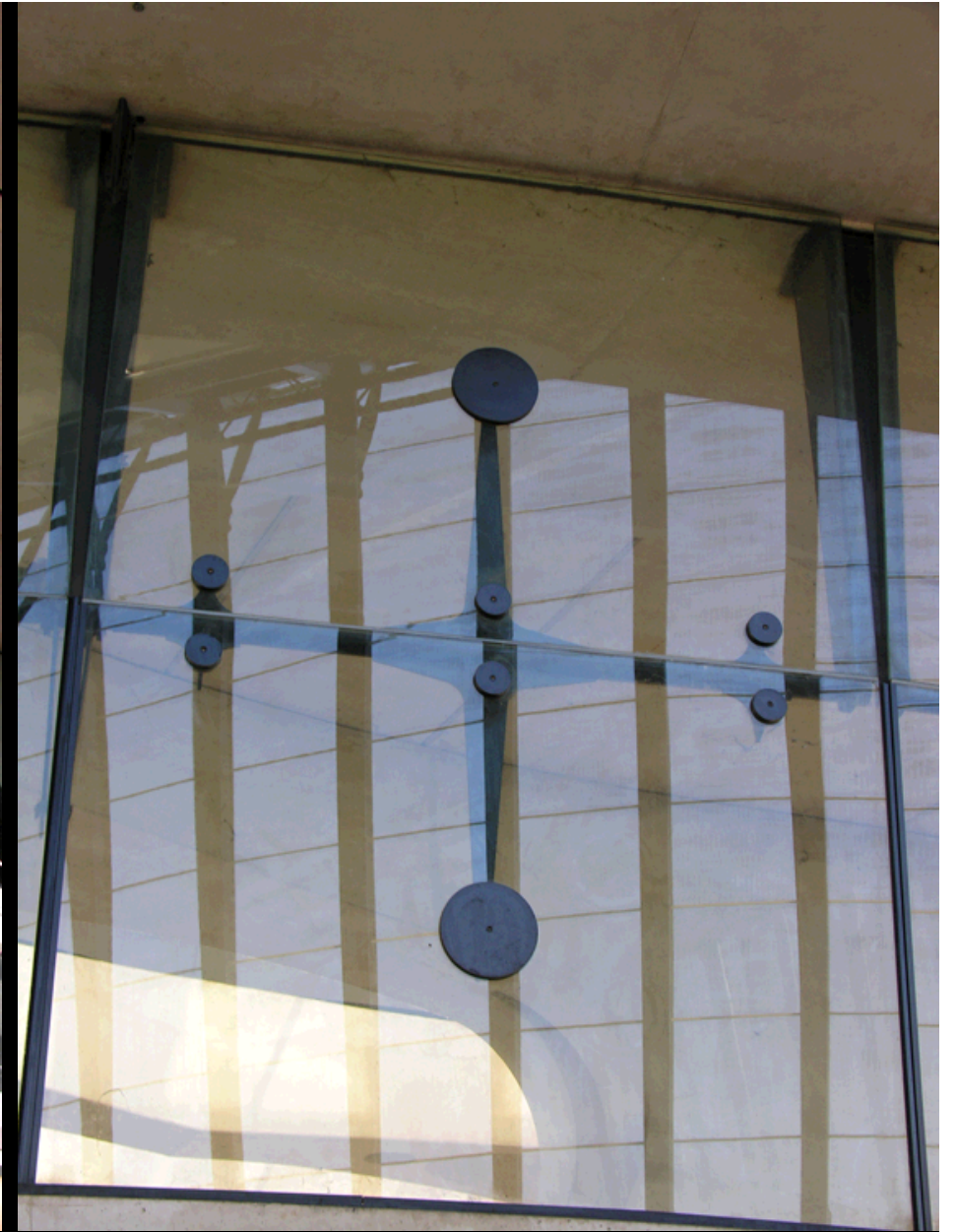






Lower Concourse

















Exit Uscita

Transfer Coincidence

Sortie Exit Uscita
Correspondance
Transfer Coincidence

Voie
4



71

























