

Kunsthaus Bregenz:

Architect: Peter Zumthor

Designed 1989 - 1993

Completed 1997

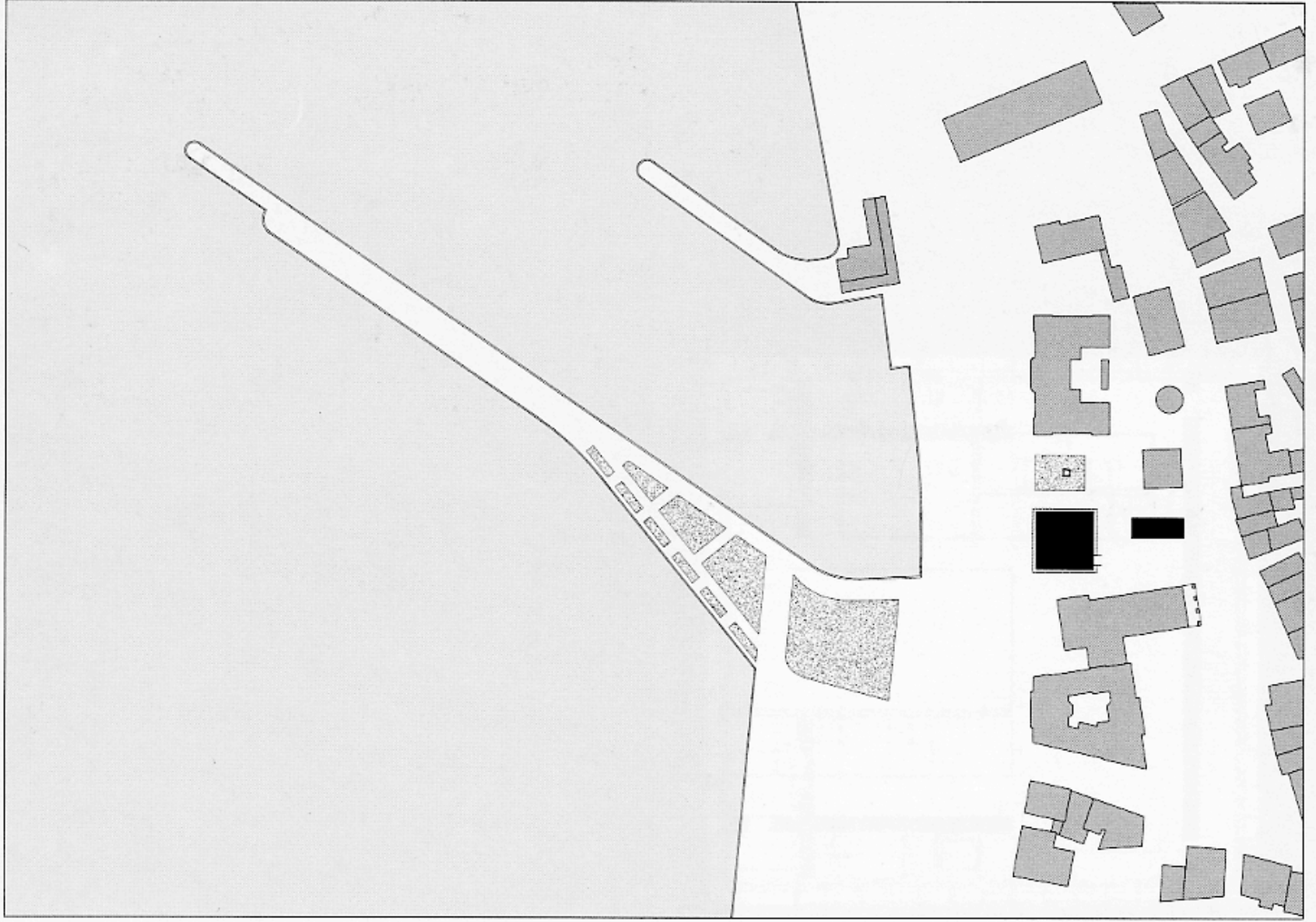
30,785 square feet

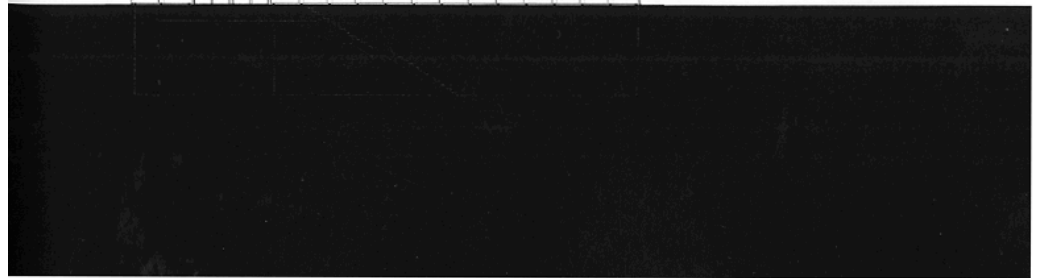
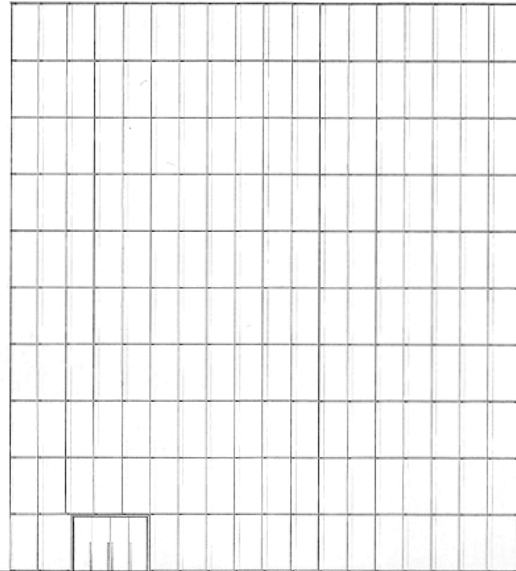
87 feet square, 7,582 s.f./fl. (gross)

31.5 million Dm to build or
approx \$1,243/s.f.

Clad with 712 glass shingles 5'-8" x 9'-8"

See more: <http://www.kunsthaus-bregenz.at/ehhtml/ewelcome.html>

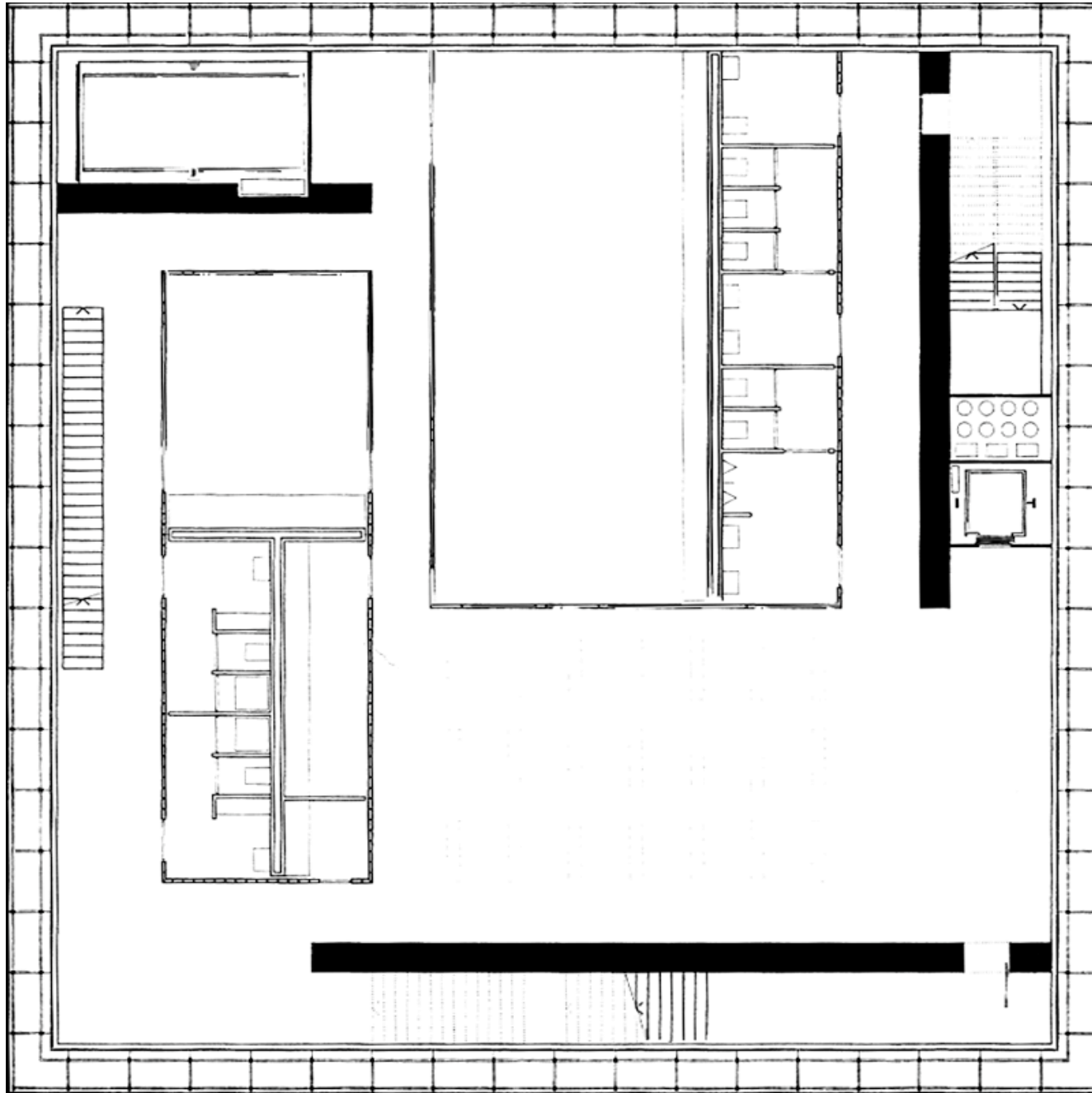




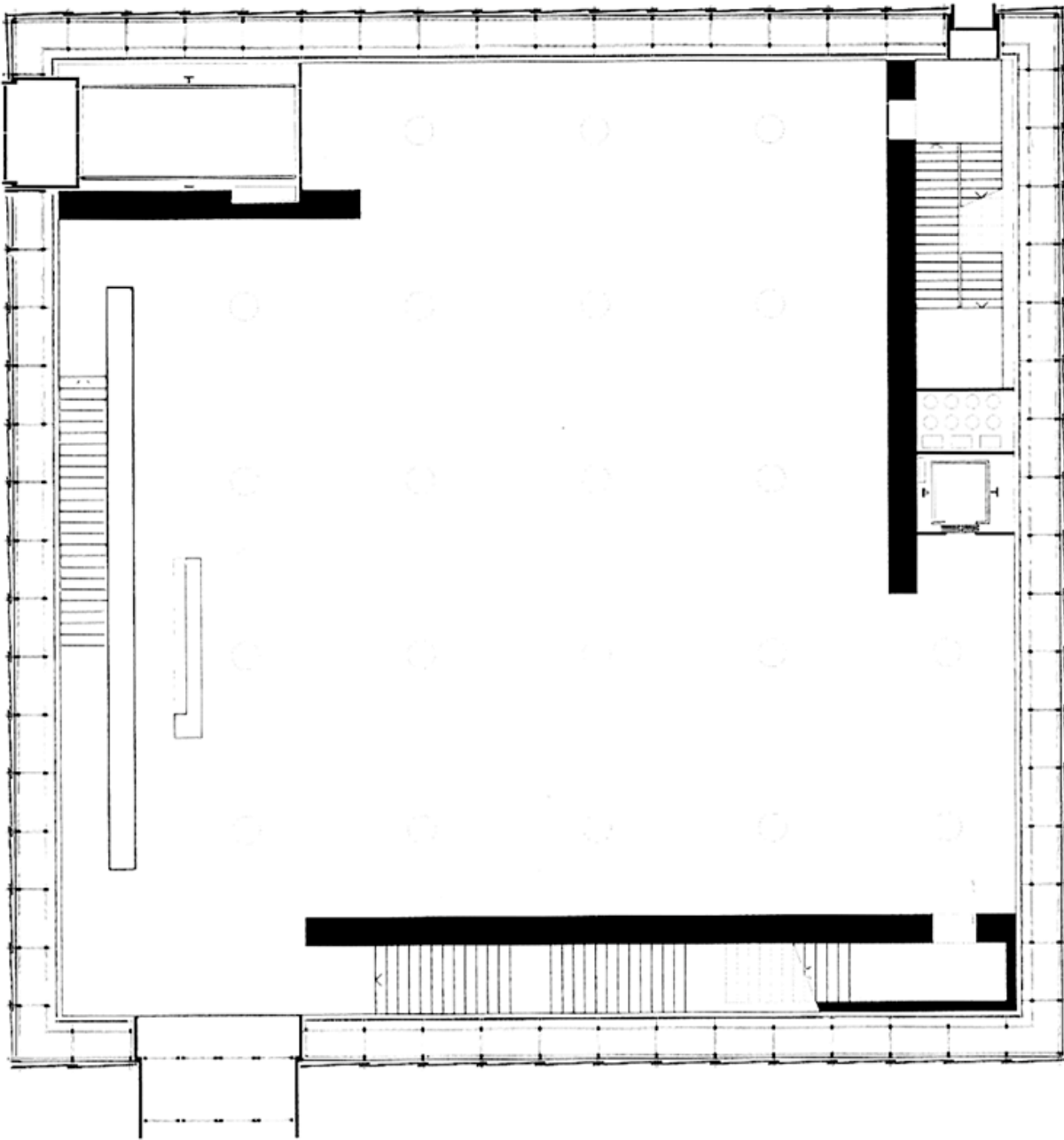




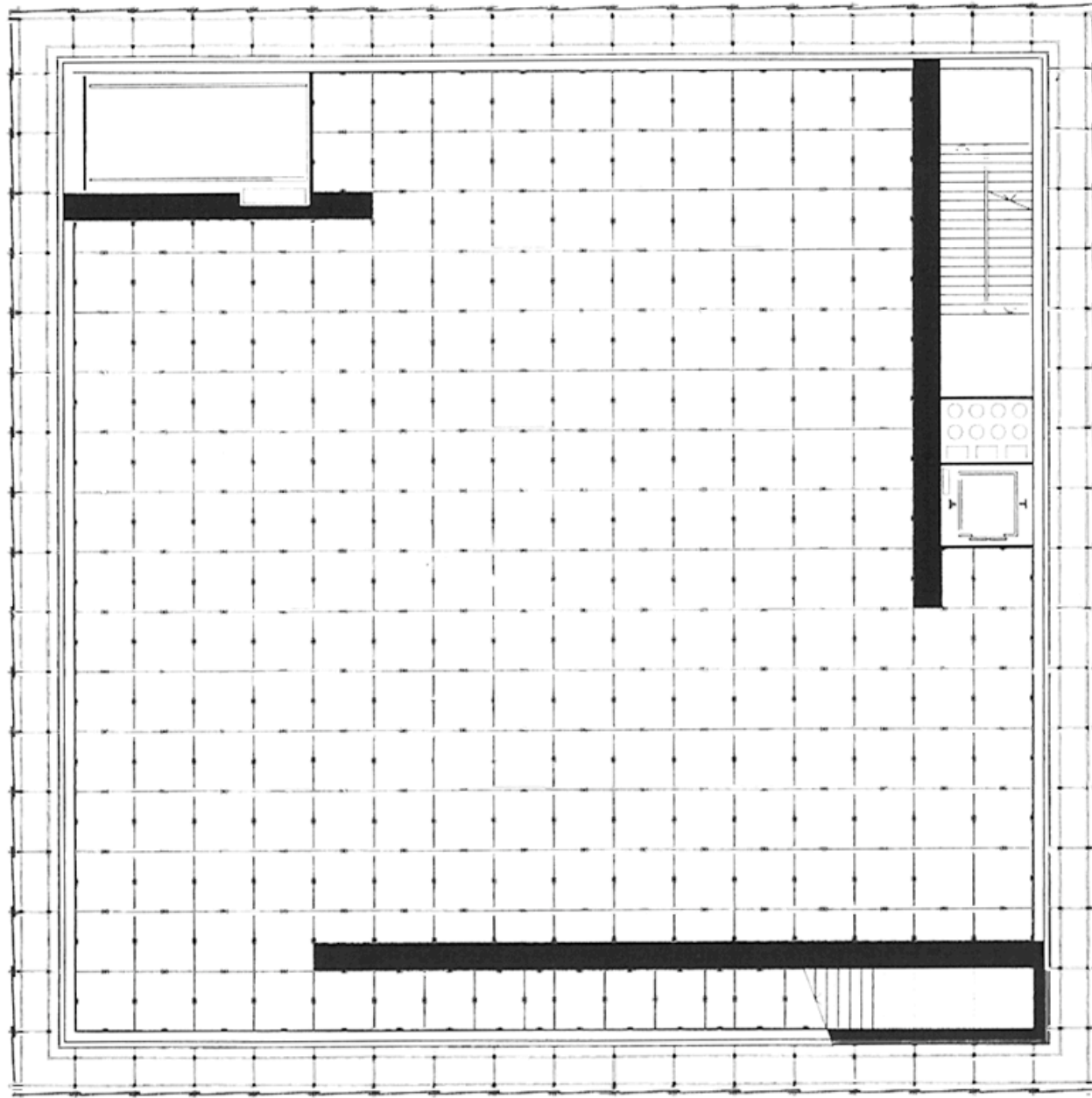




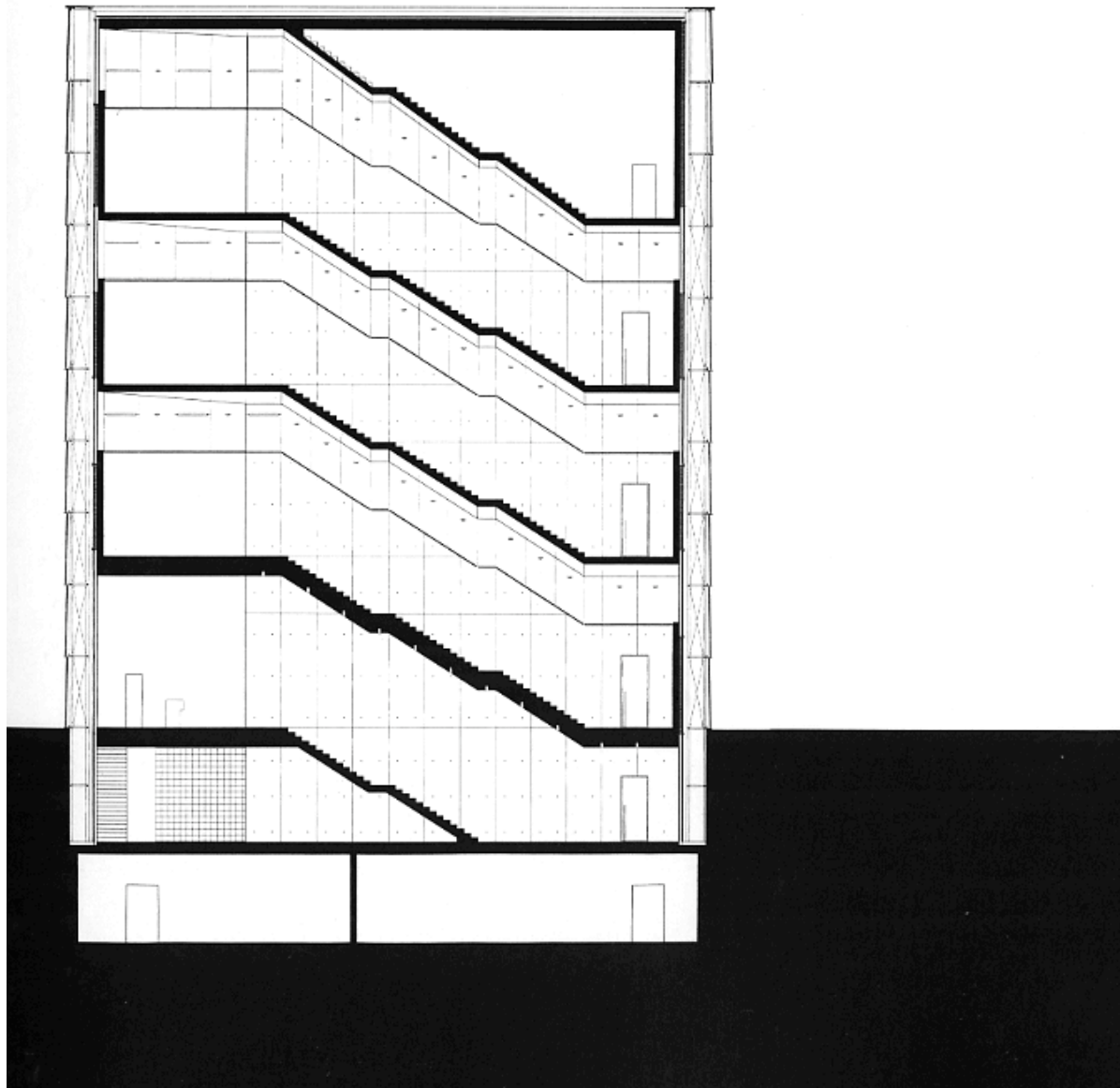
First Basement
Level



Ground Level



Upper Gallery
Levels











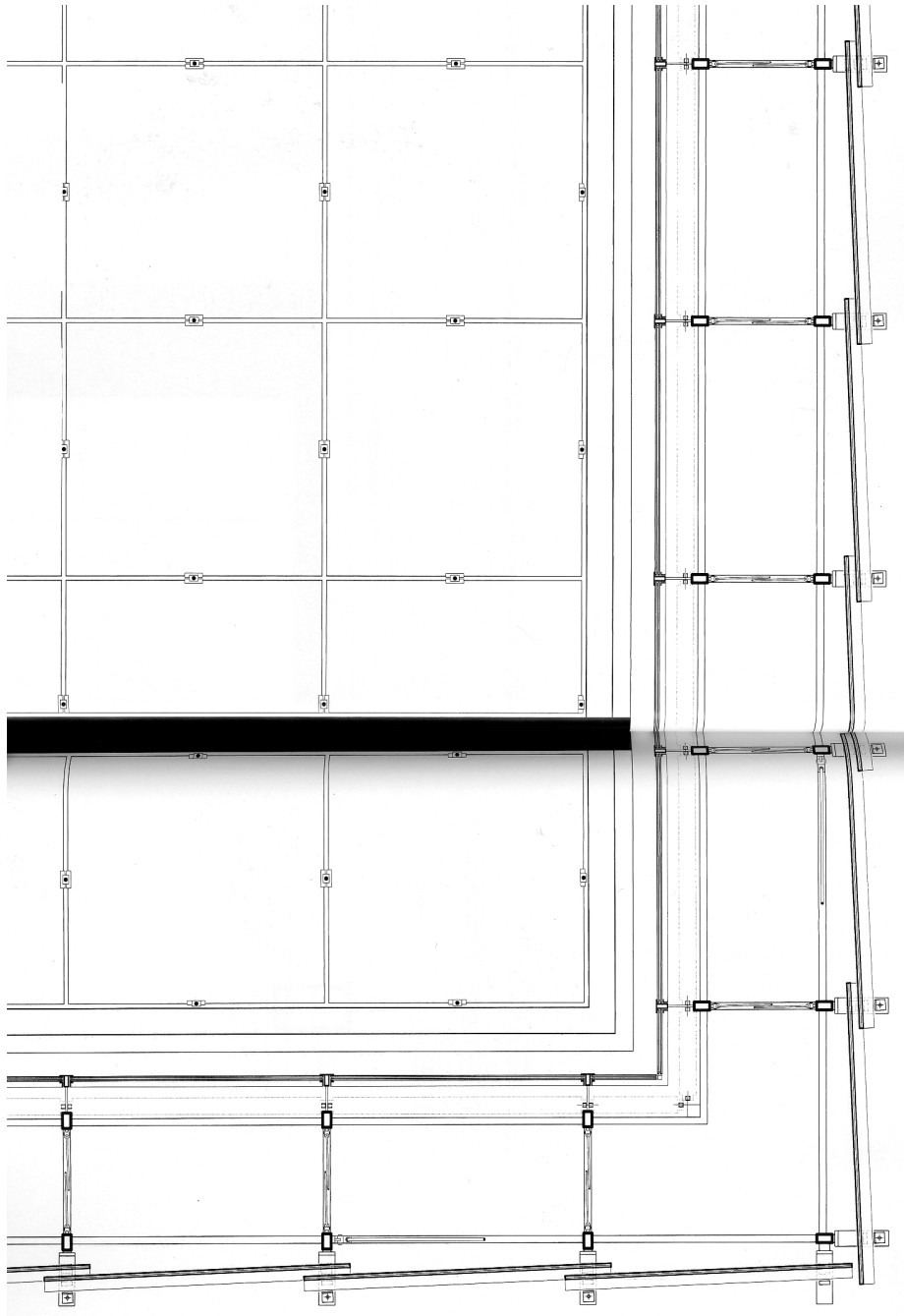






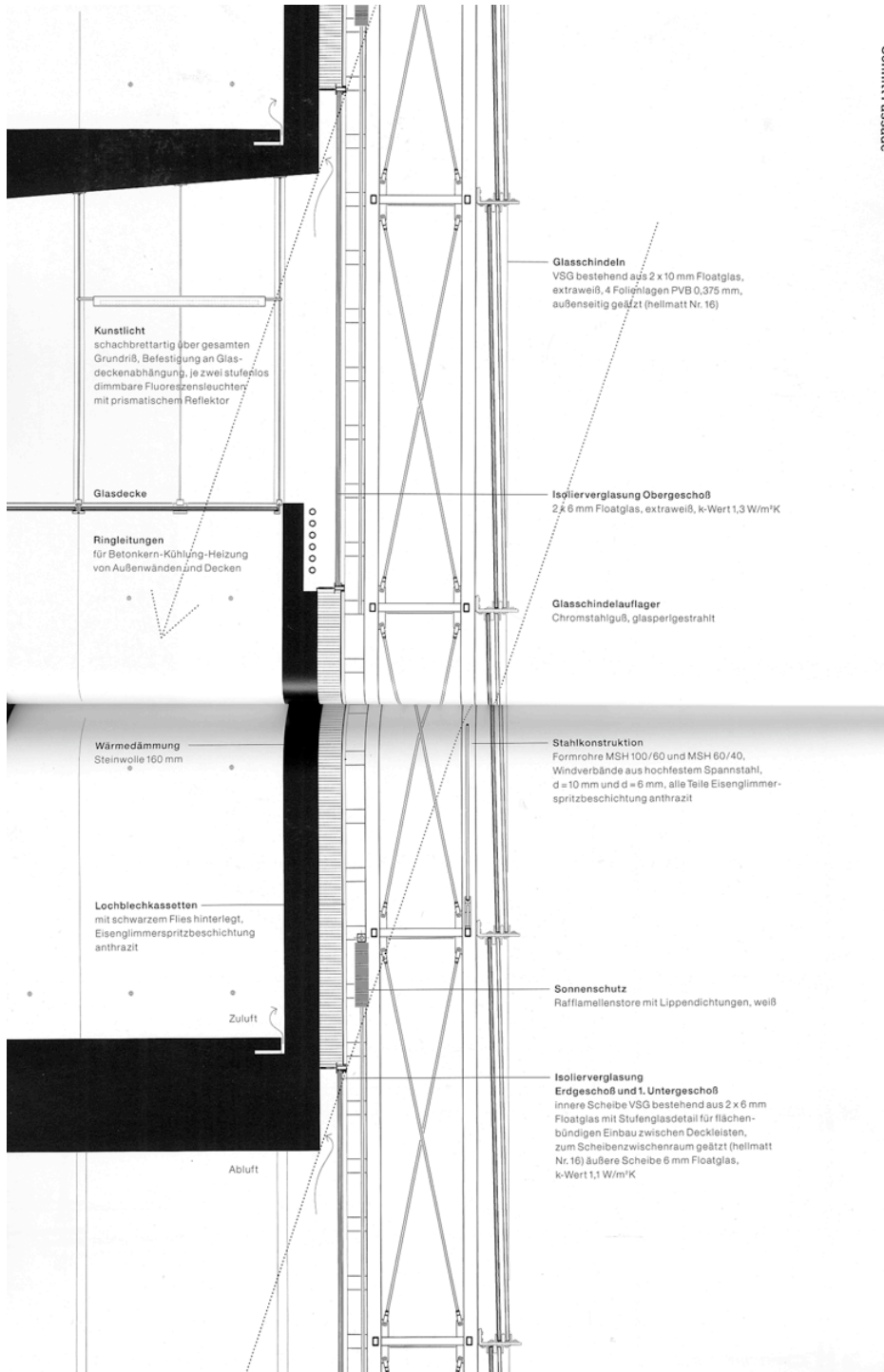








Schnitt Fassade









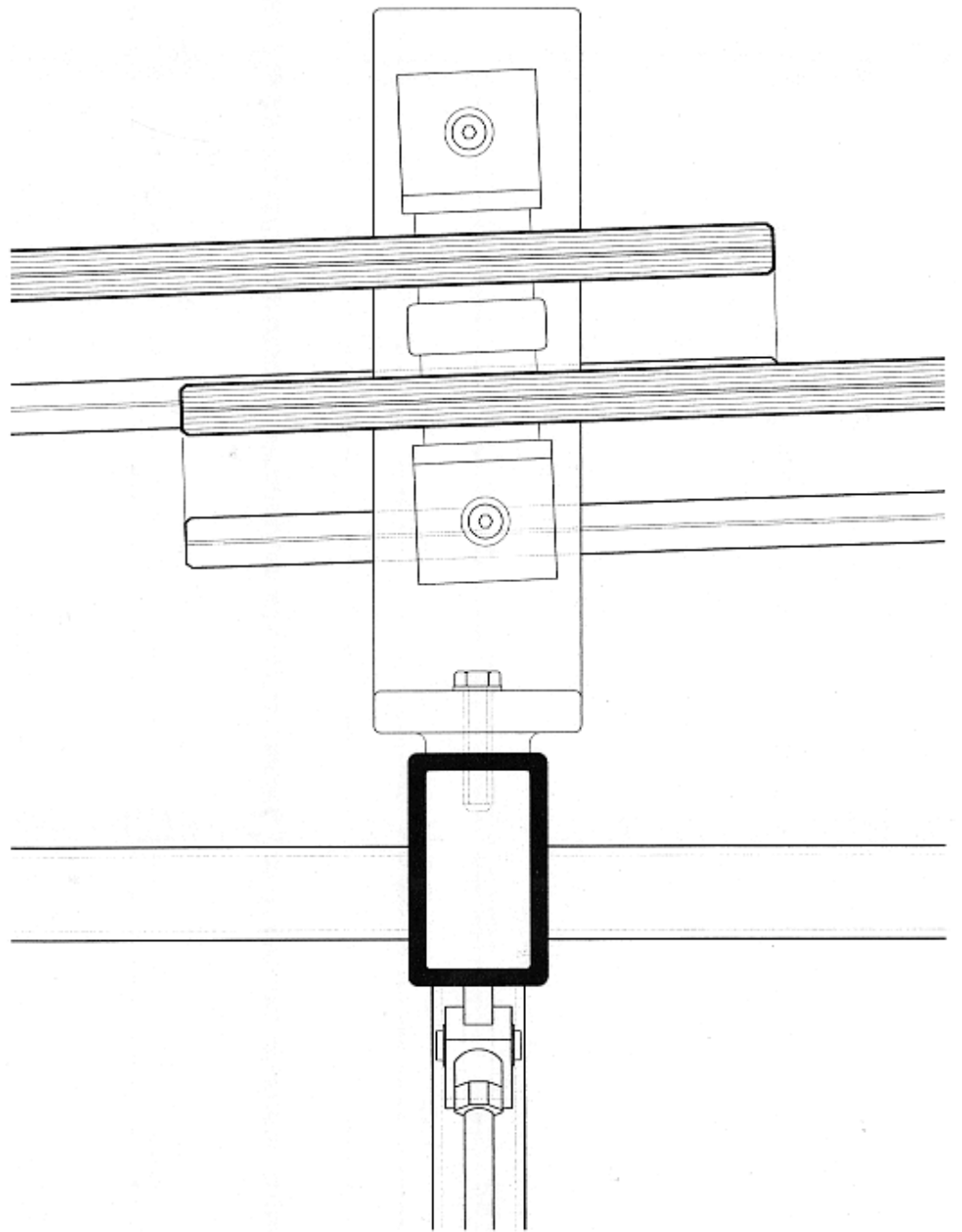


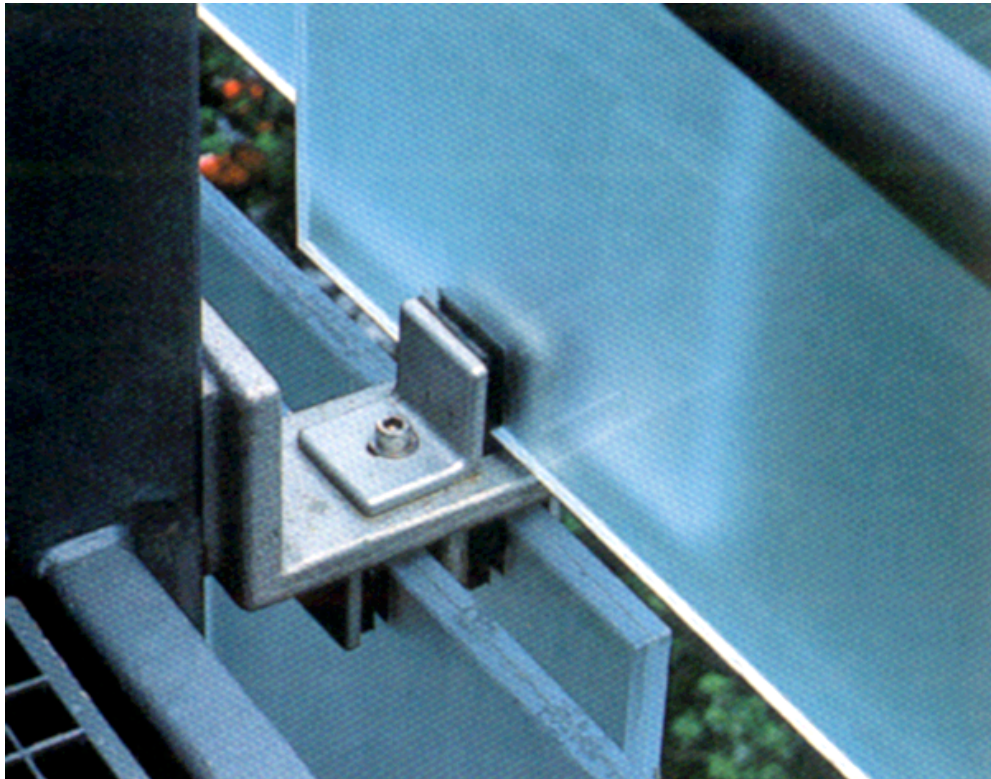


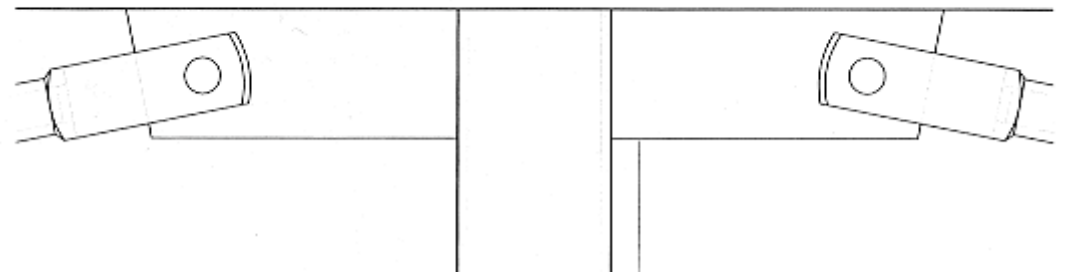
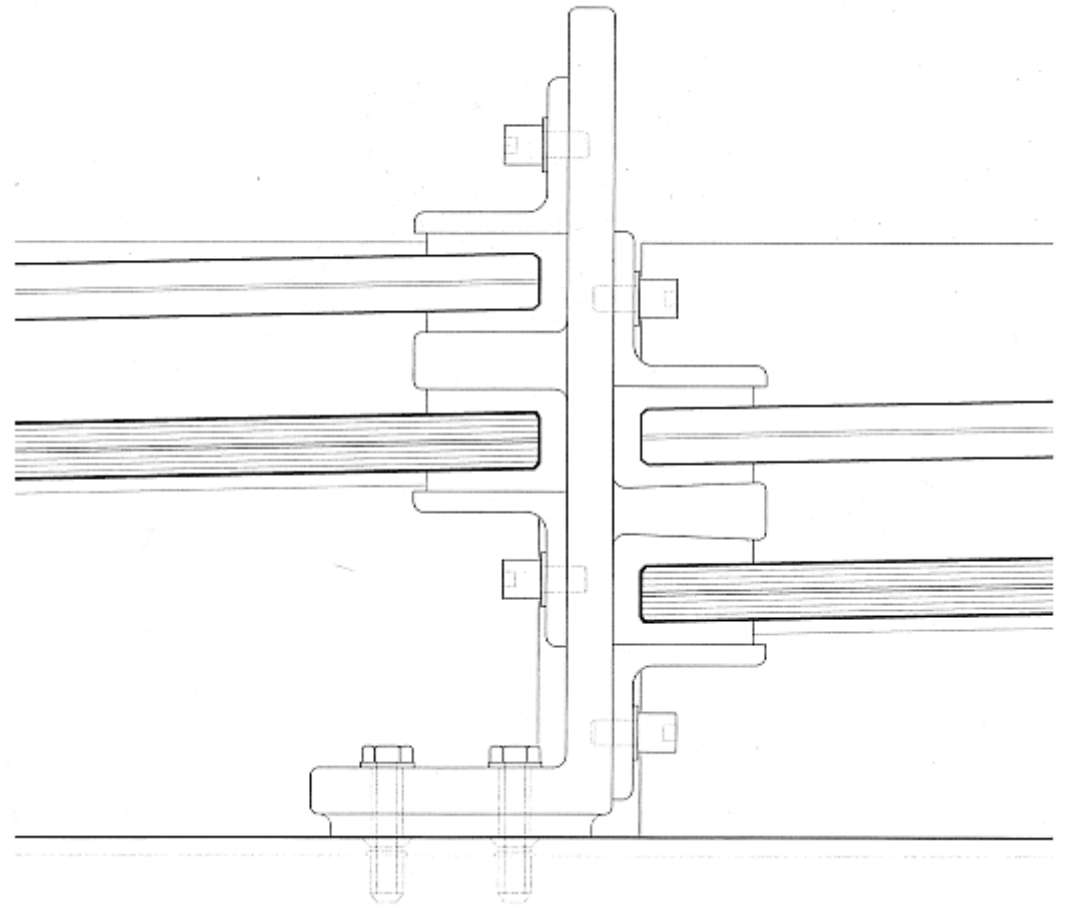








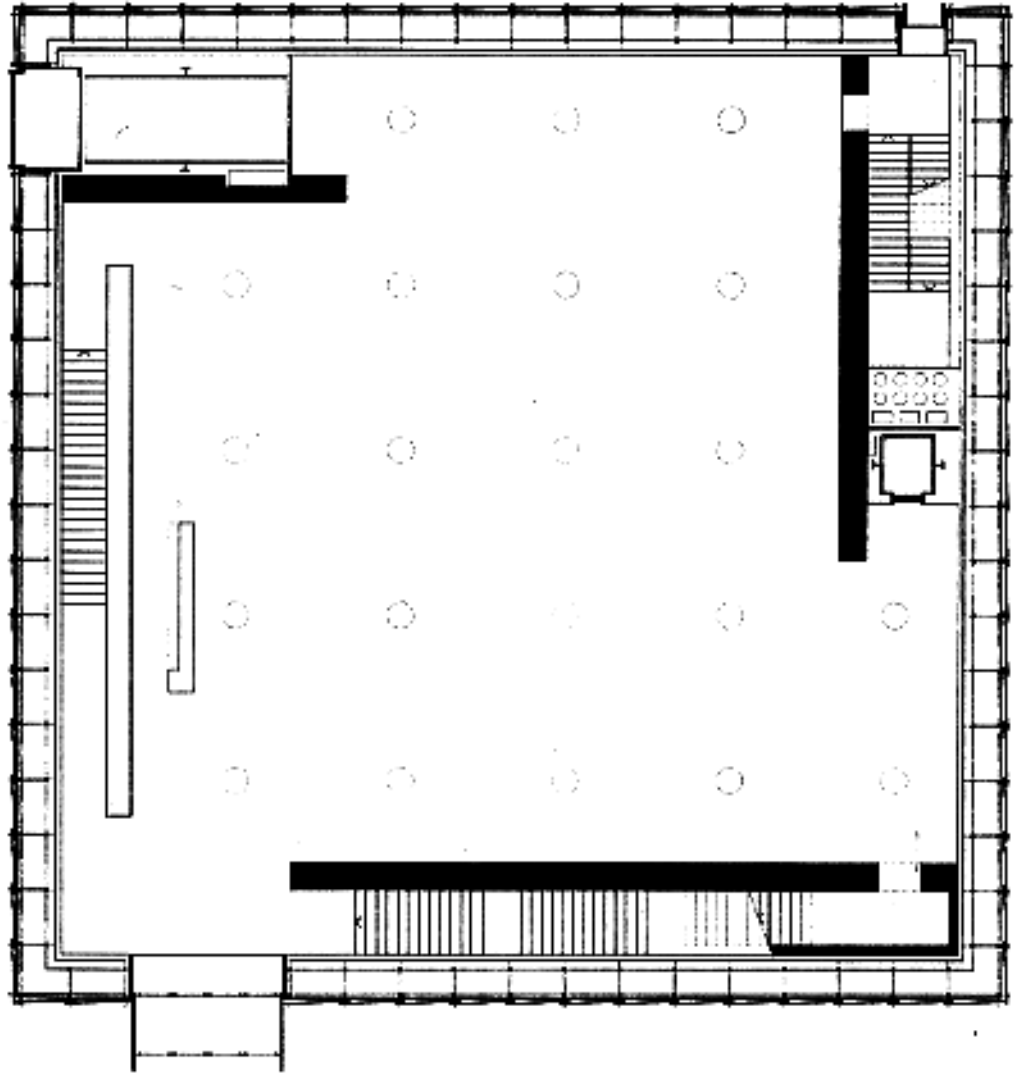








0 10

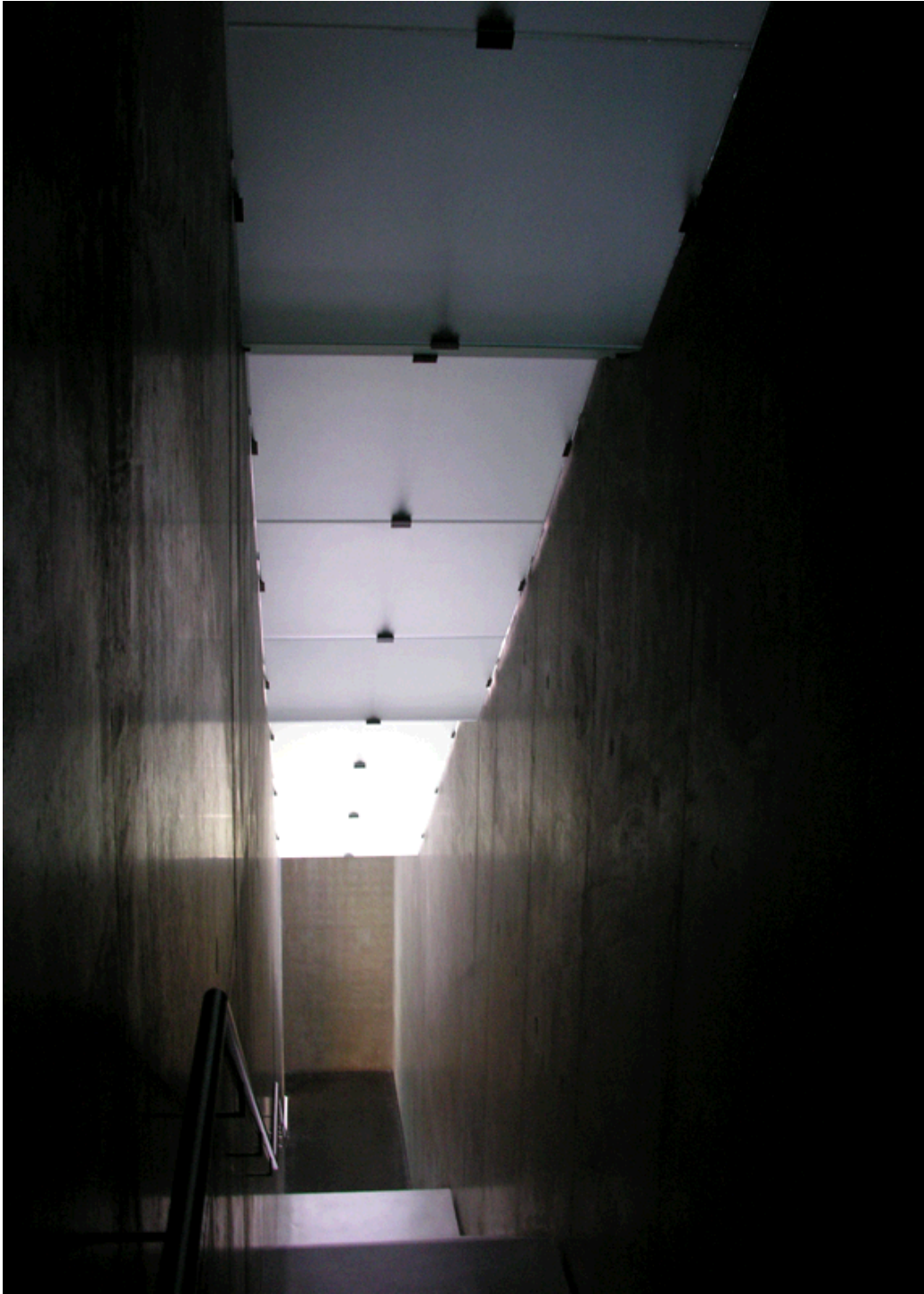




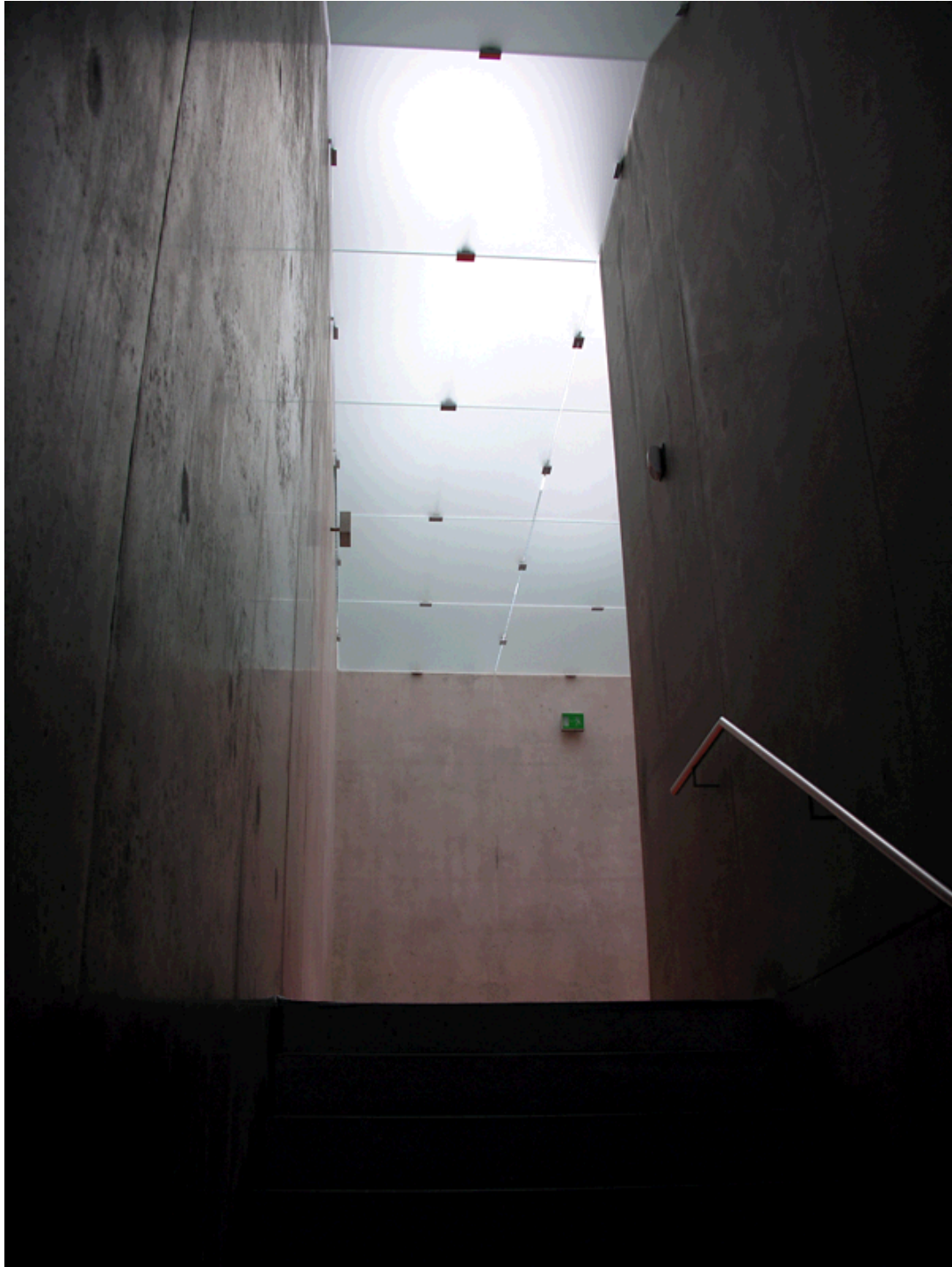




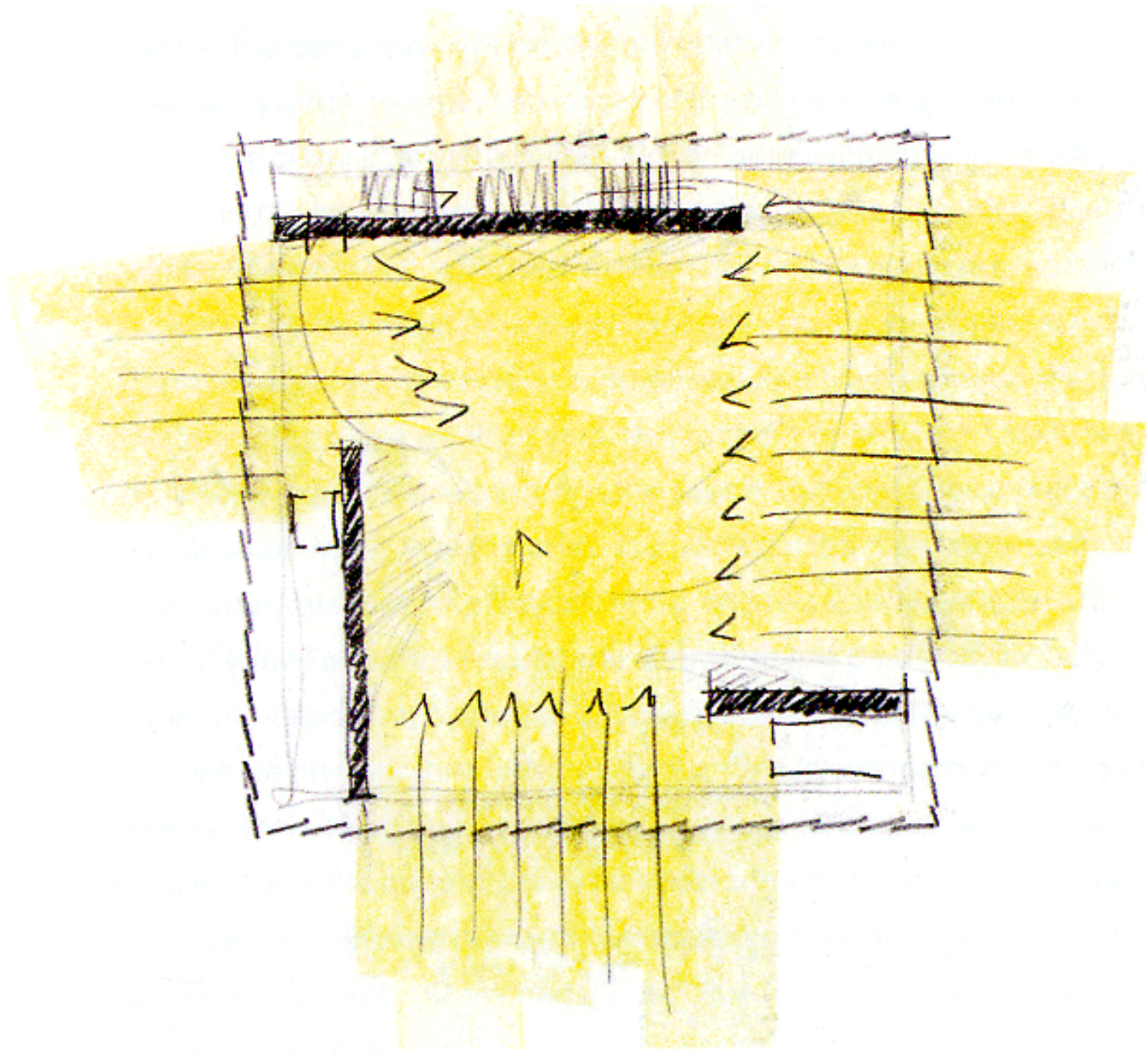


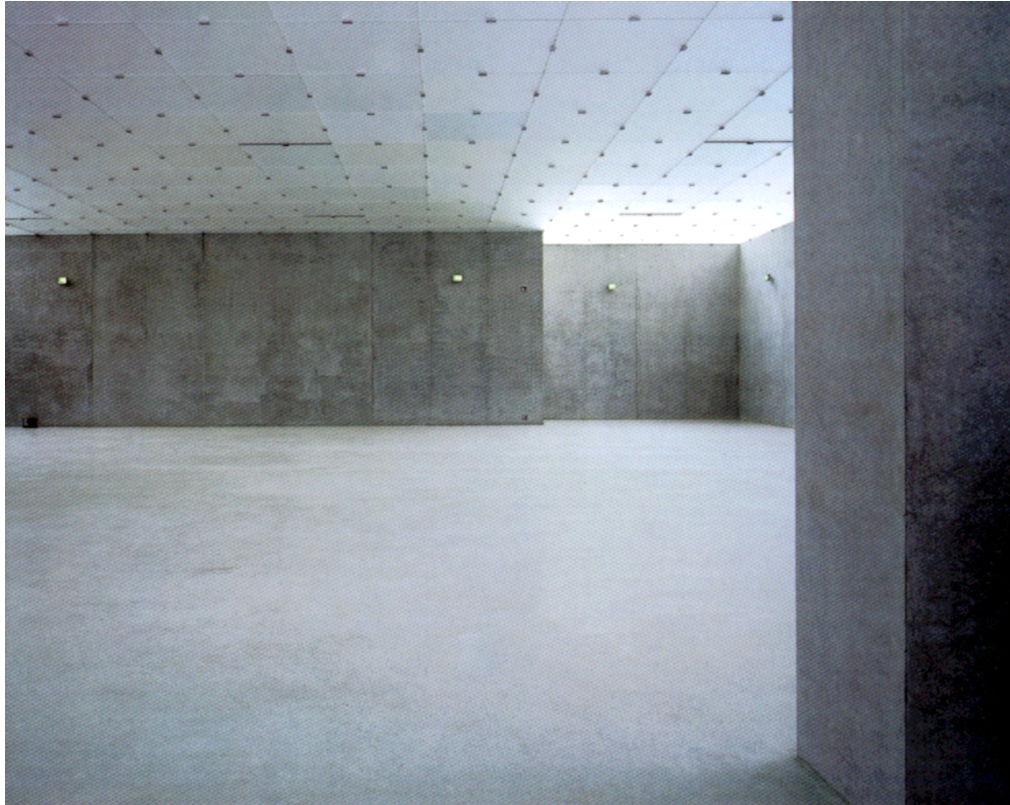


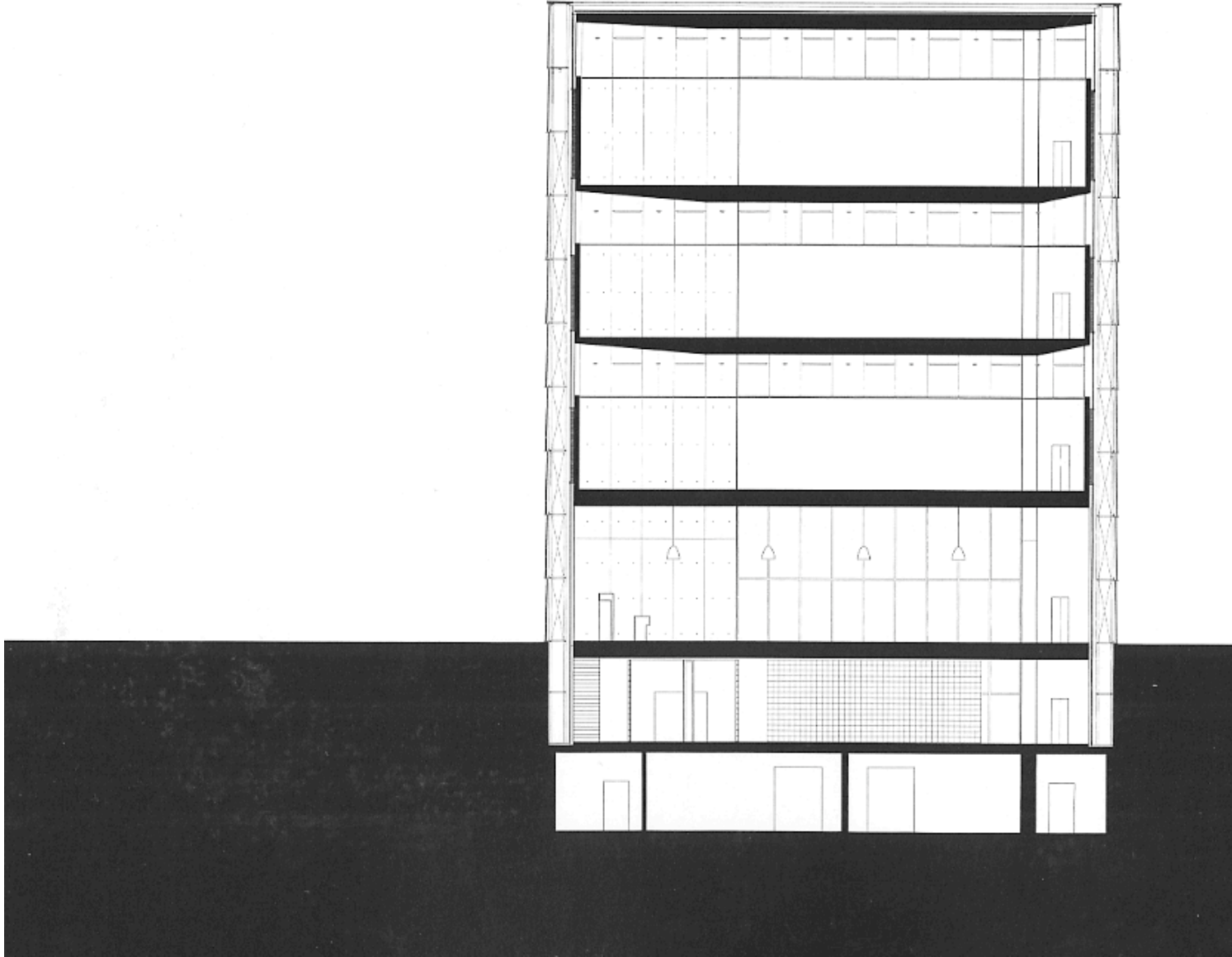


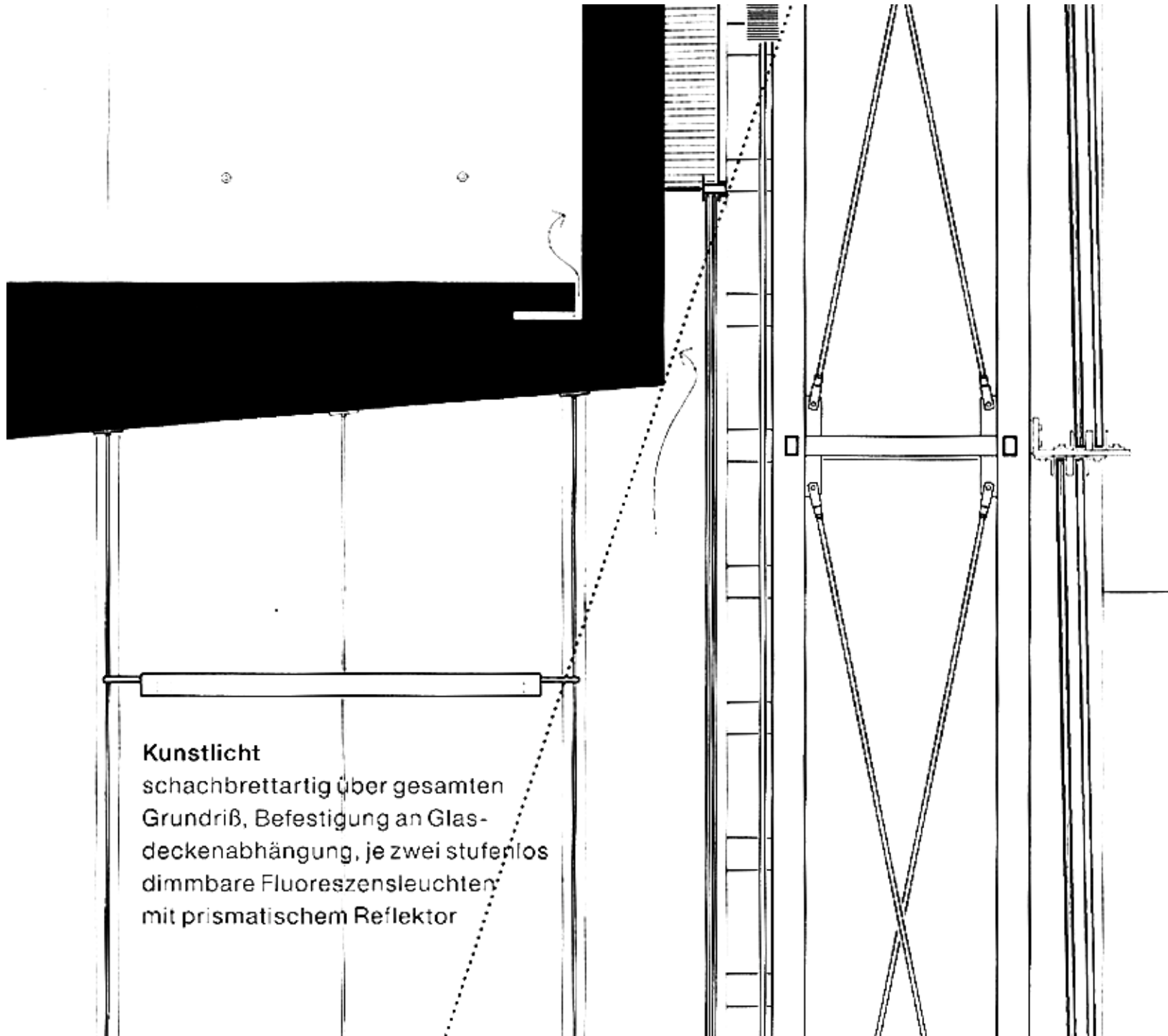






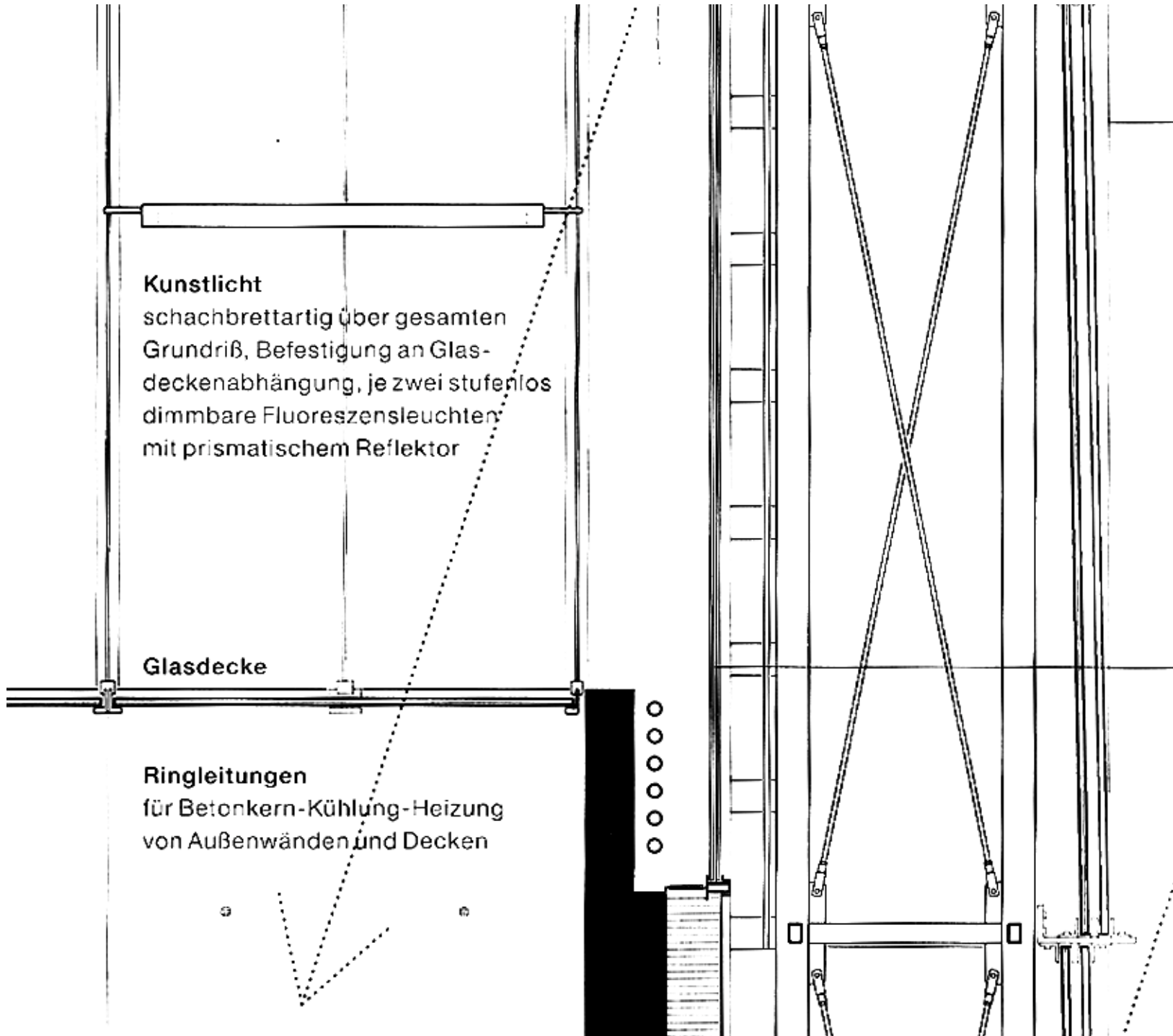






Kunstlicht

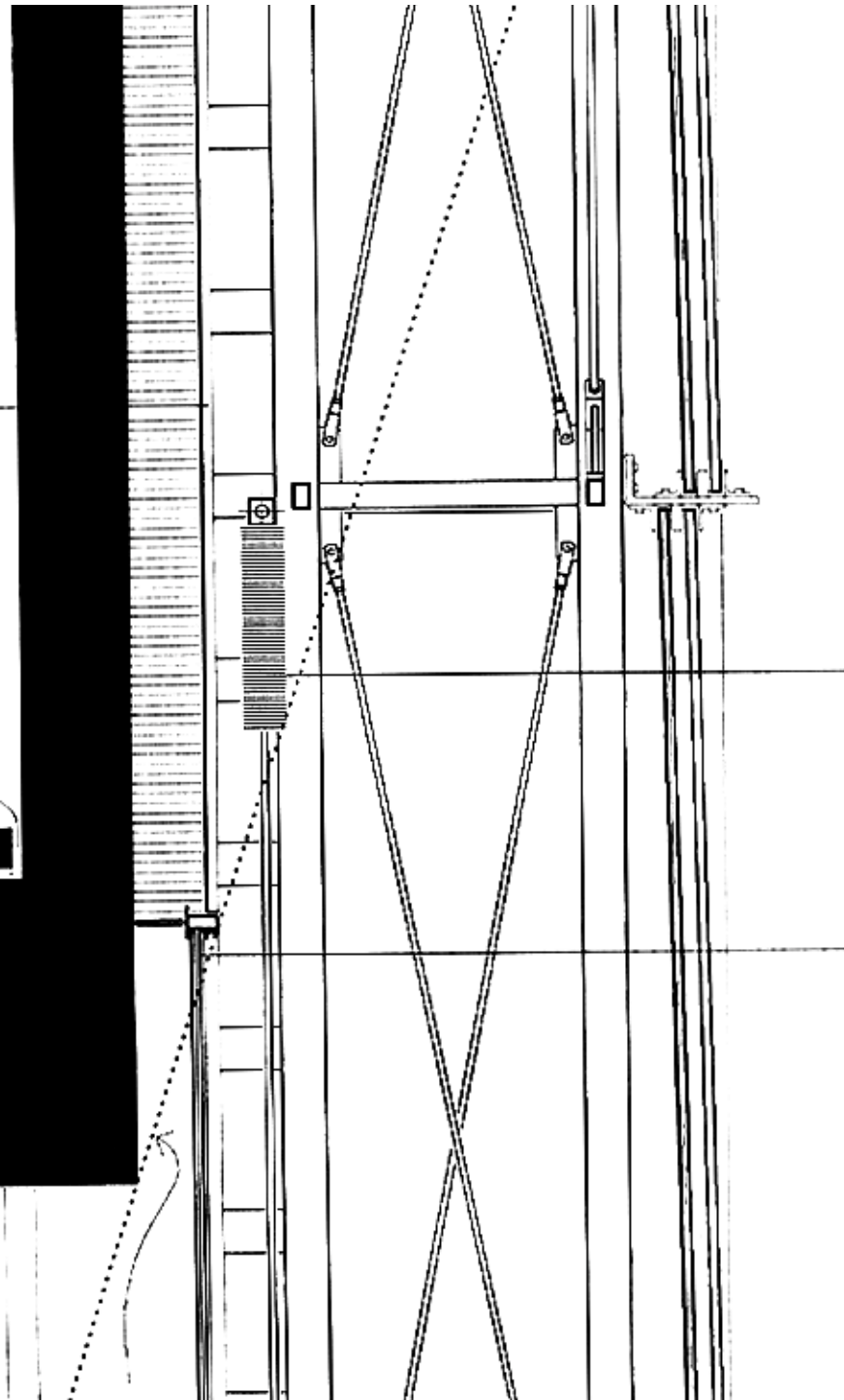
schachbrettartig über gesamten Grundriß, Befestigung an Glasdeckenabhängung, je zwei stufenlos dimmbare Fluoreszenzleuchten mit prismatischem Reflektor

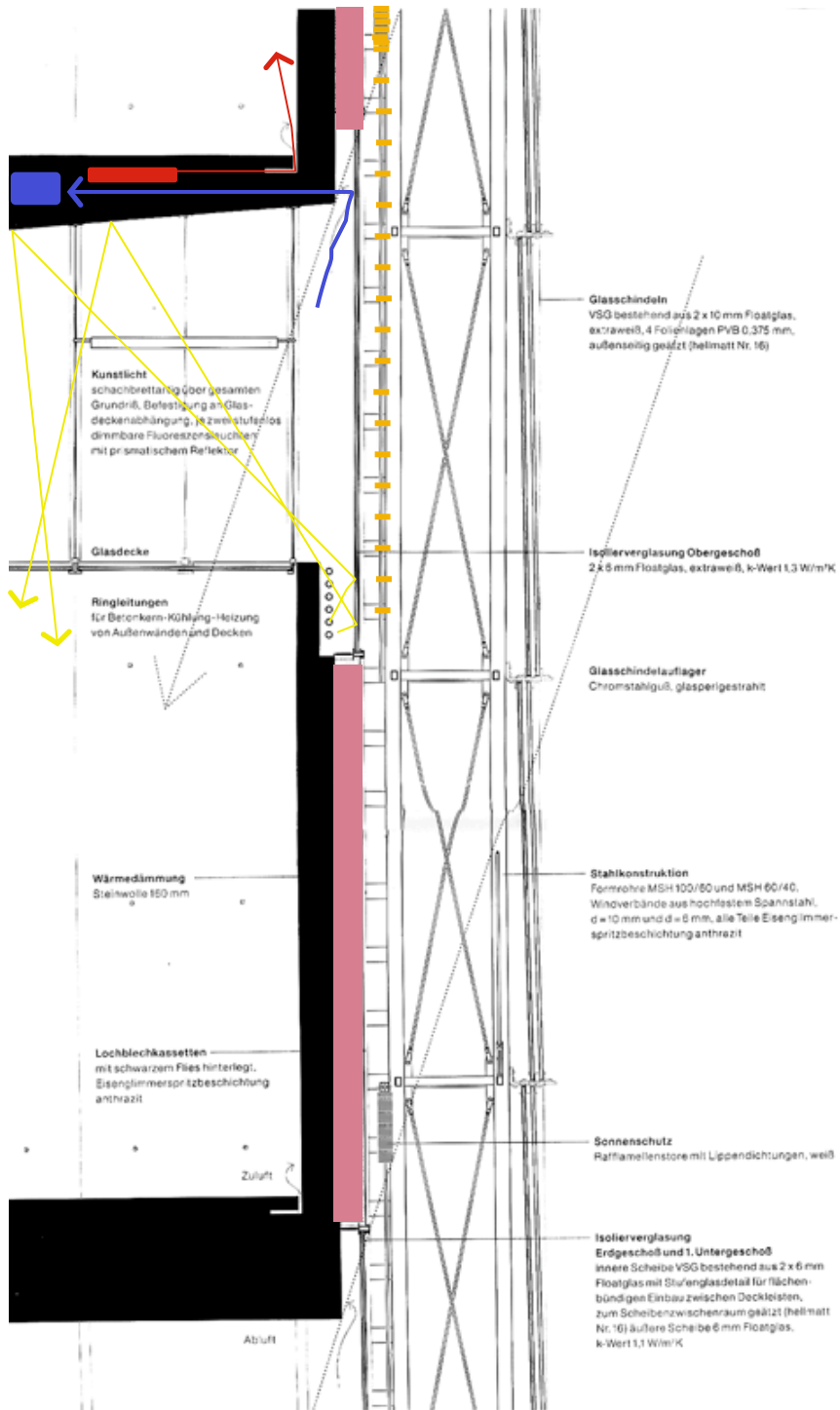


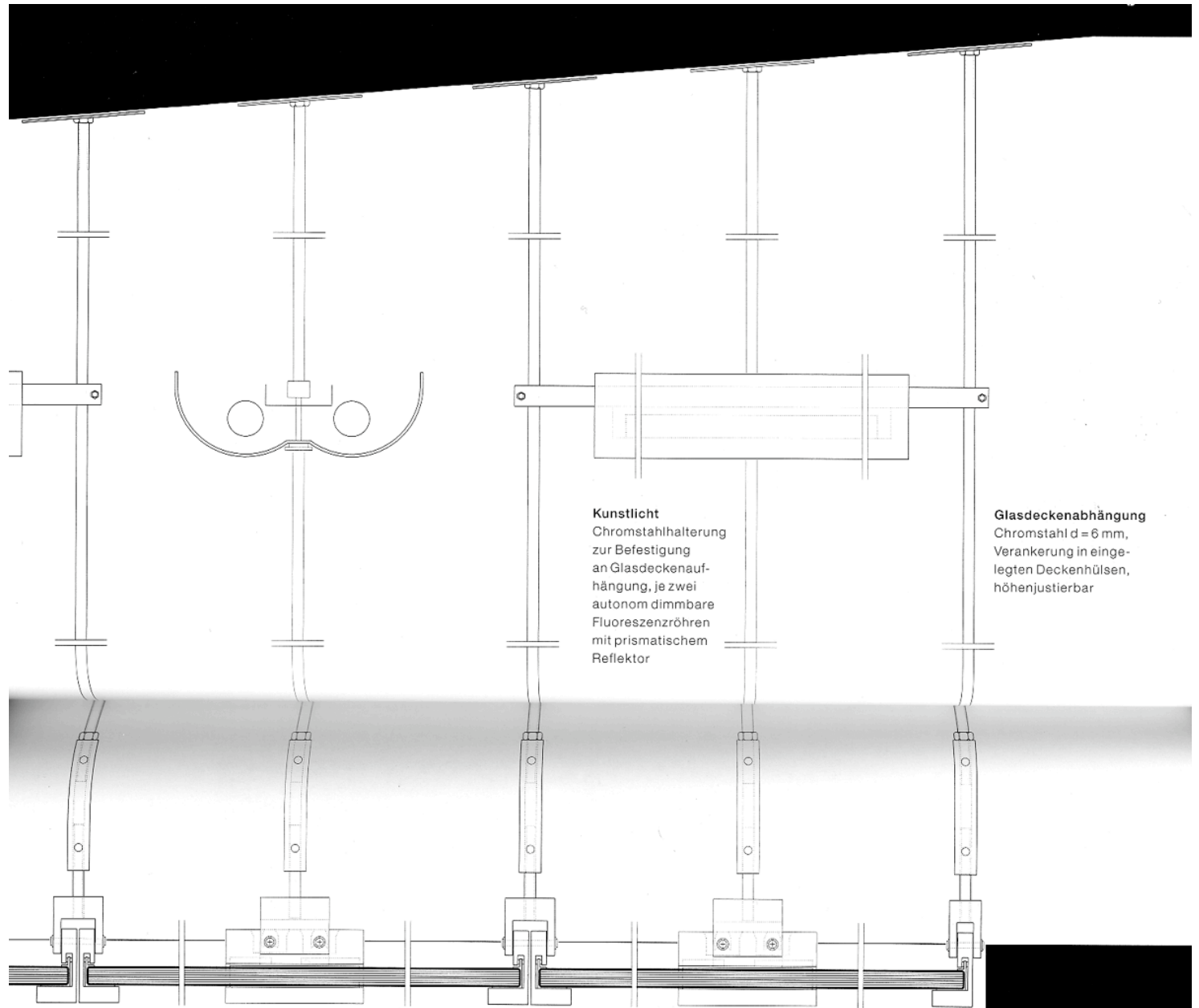
Lochblechkassetten
mit schwarzem Flies hinterlegt,
Eisenglimmerspritzbeschichtung
anthrazit

Zuluft

Abluft







Kunstlicht

Chromstahlhalterung zur Befestigung an Glasdeckenaufhängung, je zwei autonom dimmbare Fluoreszenzröhren mit prismatischem Reflektor

Glasdeckenabhängung

Chromstahl $d = 6$ mm, Verankerung in eingelassenen Deckenhülsen, höhenjustierbar

Glasdeckenaufleger

Chromstahlfrästeile, hochglanzpoliert, jedes Glas mit vierfacher punktueller Auflage zum Ausklinken

Glasdecke

VSG bestehend aus 2 x 6 mm Floatglas, extraweiß, 2 Folienlagen PVB 0,375 mm, raumseitig geätzt (hellmatt Nr. 16)

