

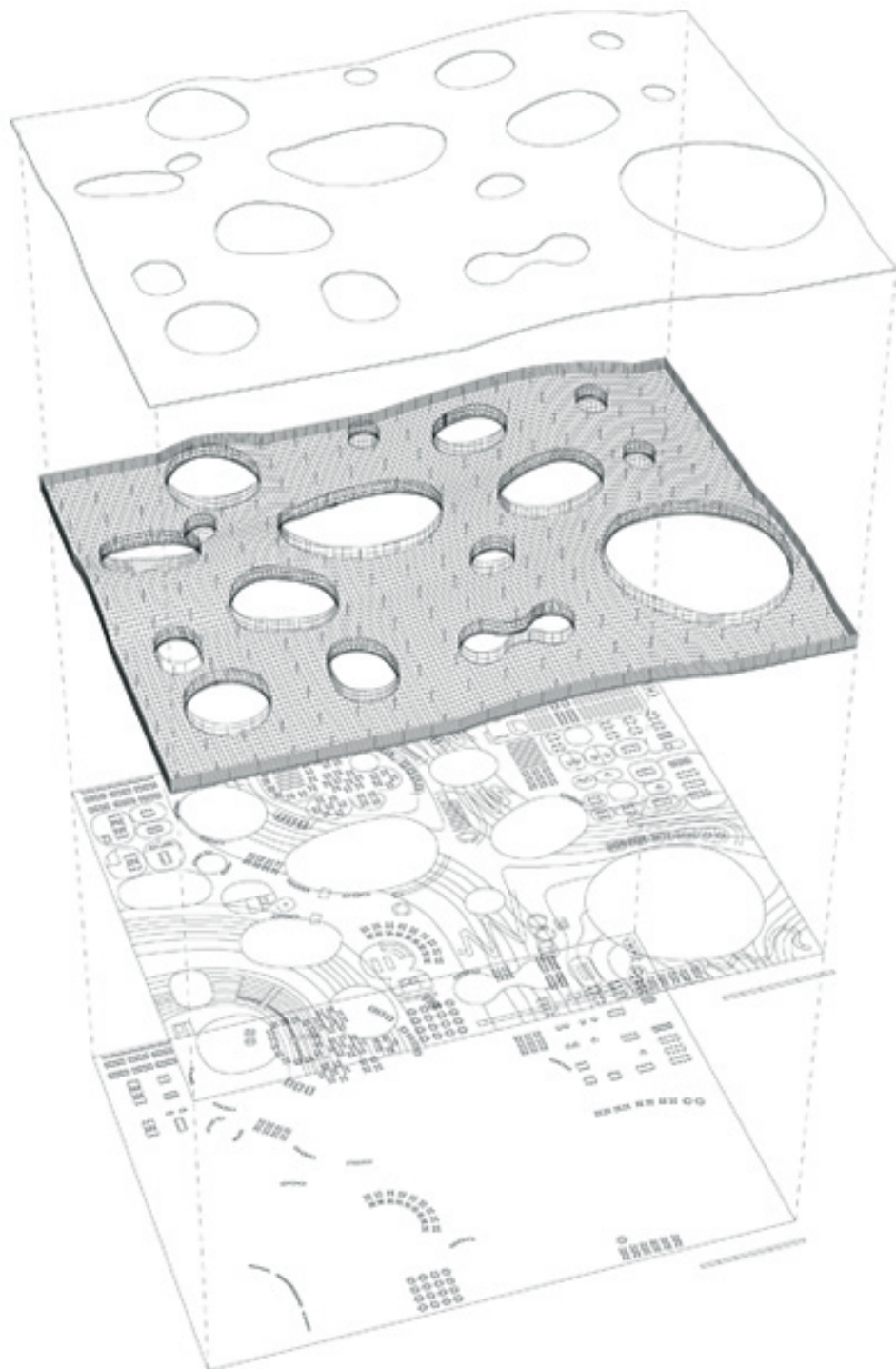
A learning landscape

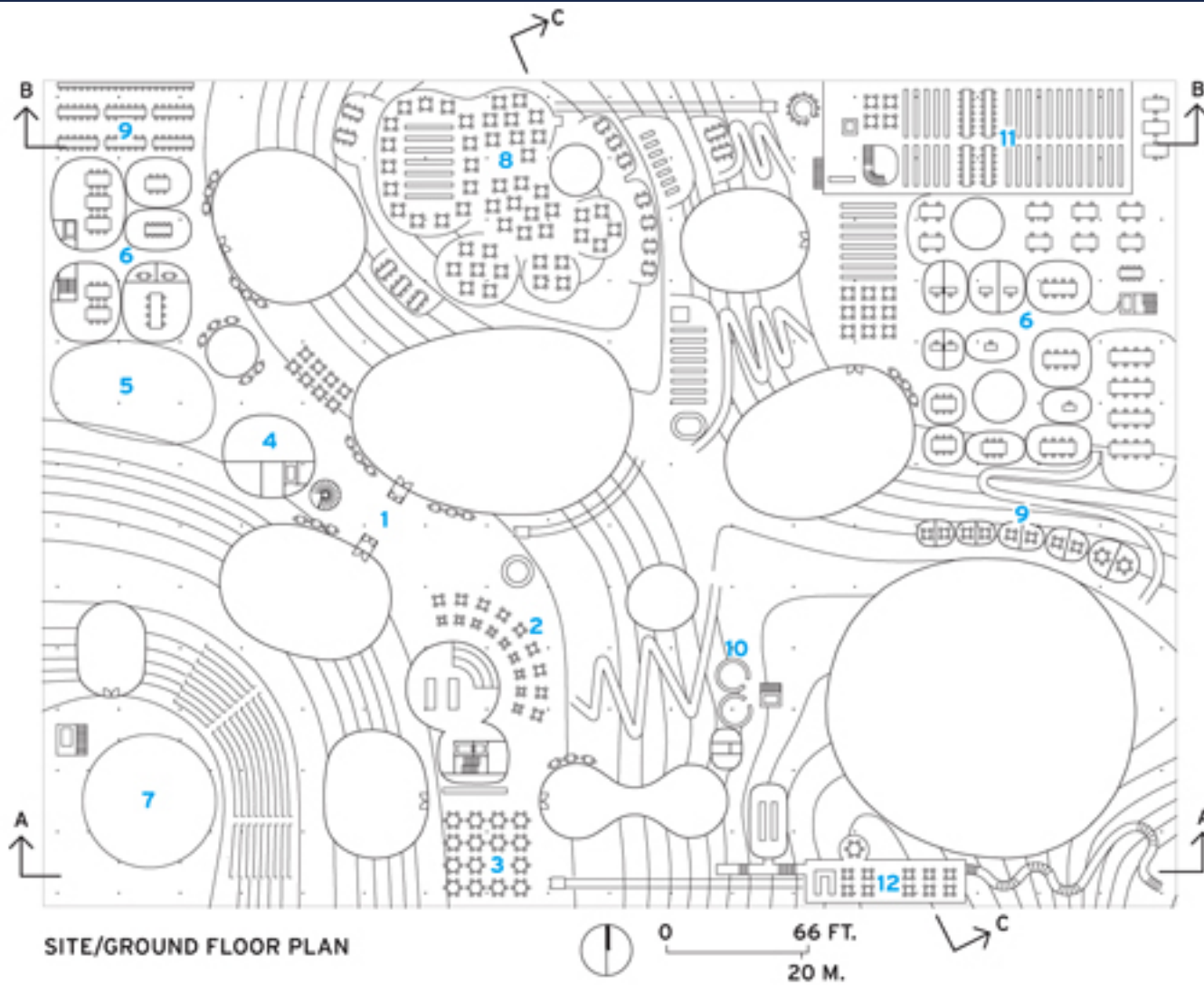
Rolex Learning Center,
Sanaa, Lusanne, Swi,
2010

121,391 s.f.



Kazuyo Sejima + Ryue Nishizawa

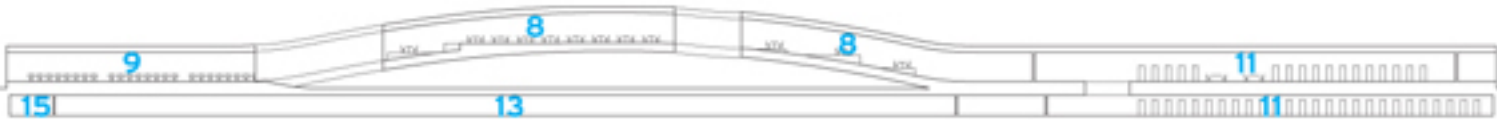




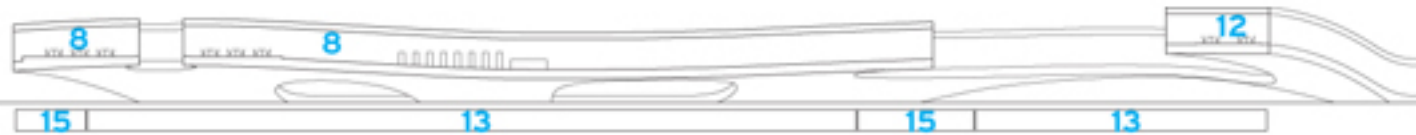
- | | | | | | |
|---|---------------|----|--------------------------|----|---------------------|
| 1 | Main entrance | 6 | Offices | 11 | Research collection |
| 2 | Café | 7 | Multipurpose hall | 12 | Restaurant |
| 3 | Food court | 8 | Library | 13 | Parking |
| 4 | Bank | 9 | Work area | 14 | Storage |
| 5 | Bookshop | 10 | Ancient books collection | 15 | Mechanical |



SECTION A-A



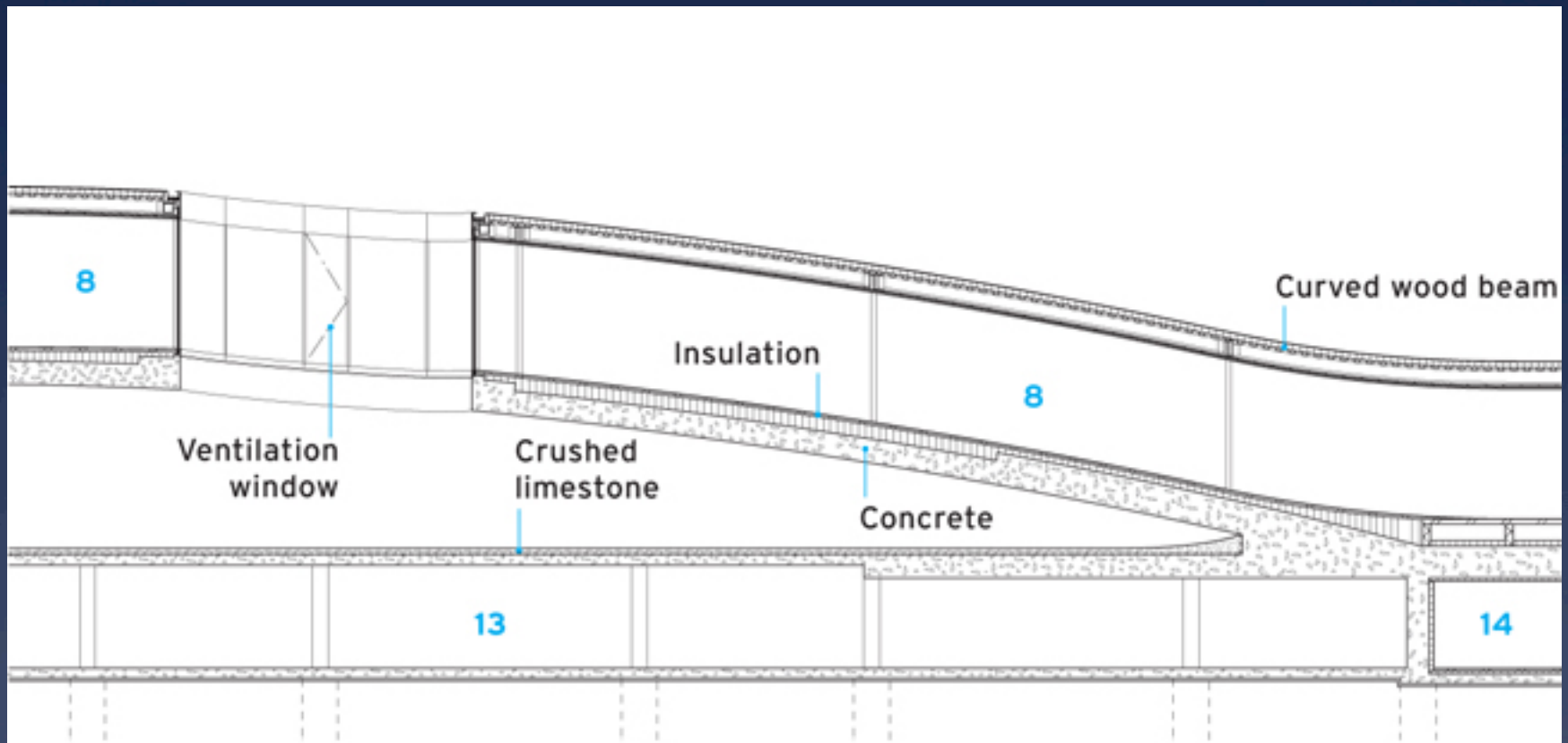
SECTION B-B



SECTION C-C

0 30 FT.
9 M.

- | | | | | | |
|---|---------------|----|--------------------------|----|---------------------|
| 1 | Main entrance | 6 | Offices | 11 | Research collection |
| 2 | Café | 7 | Multipurpose hall | 12 | Restaurant |
| 3 | Food court | 8 | Library | 13 | Parking |
| 4 | Bank | 9 | Work area | 14 | Storage |
| 5 | Bookshop | 10 | Ancient books collection | 15 | Mechanical |



DETAIL SECTION

1	Main entrance	6	Offices	11	Research collection
2	Café	7	Multipurpose hall	12	Restaurant
3	Food court	8	Library	13	Parking
4	Bank	9	Work area	14	Storage
5	Bookshop	10	Ancient books collection	15	Mechanical







Photo: Iwan Ban





Photo: Iwan Ban



Photo: Iwan Ban



Photo: Iwan Ban







Library Terraces





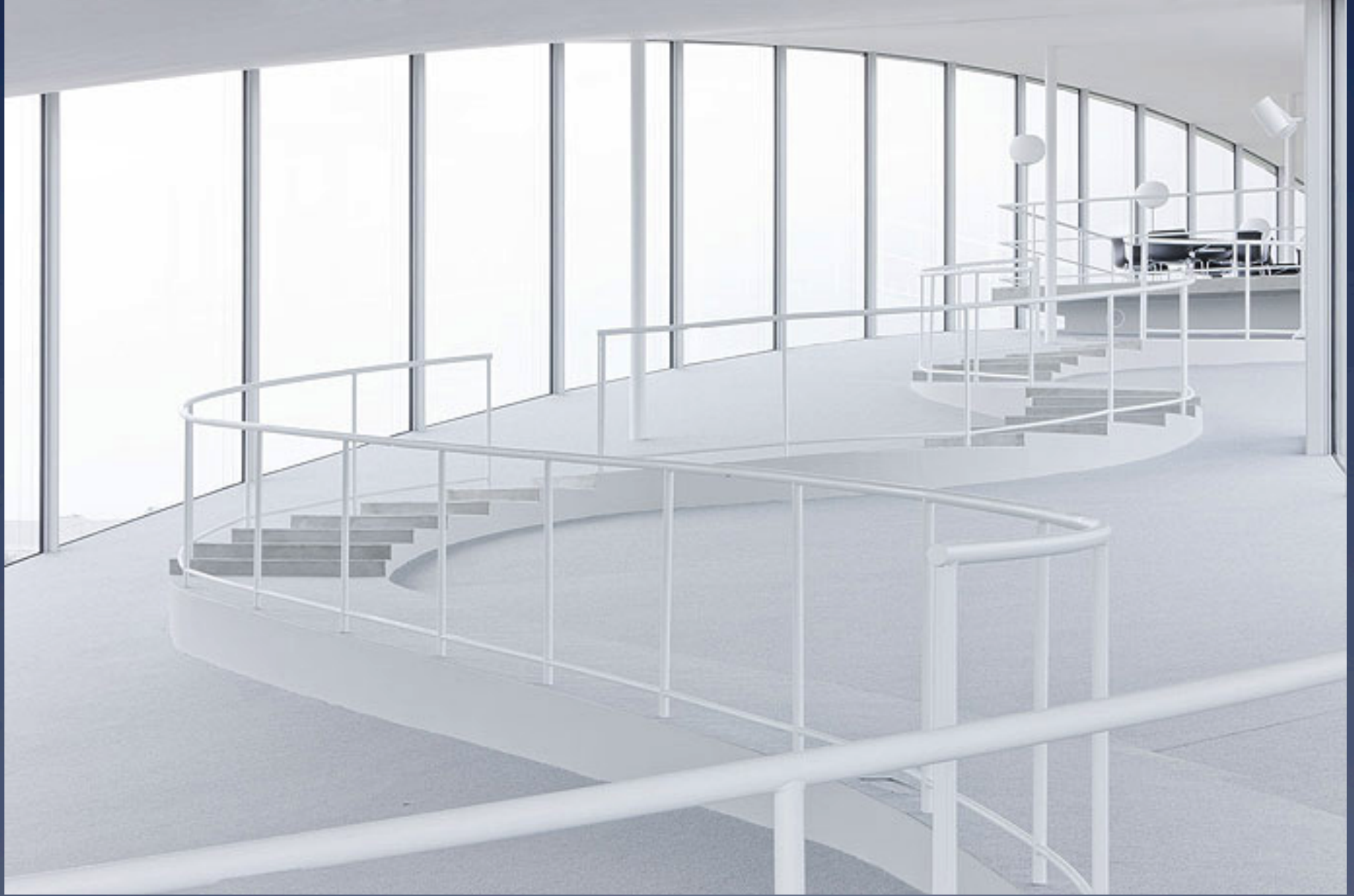


Photo: Iwan Ban



Photo: Iwan Ban



Photo: Iwan Ban





Photo: Iwan Ban



Administration



Photo: Iwan Ban

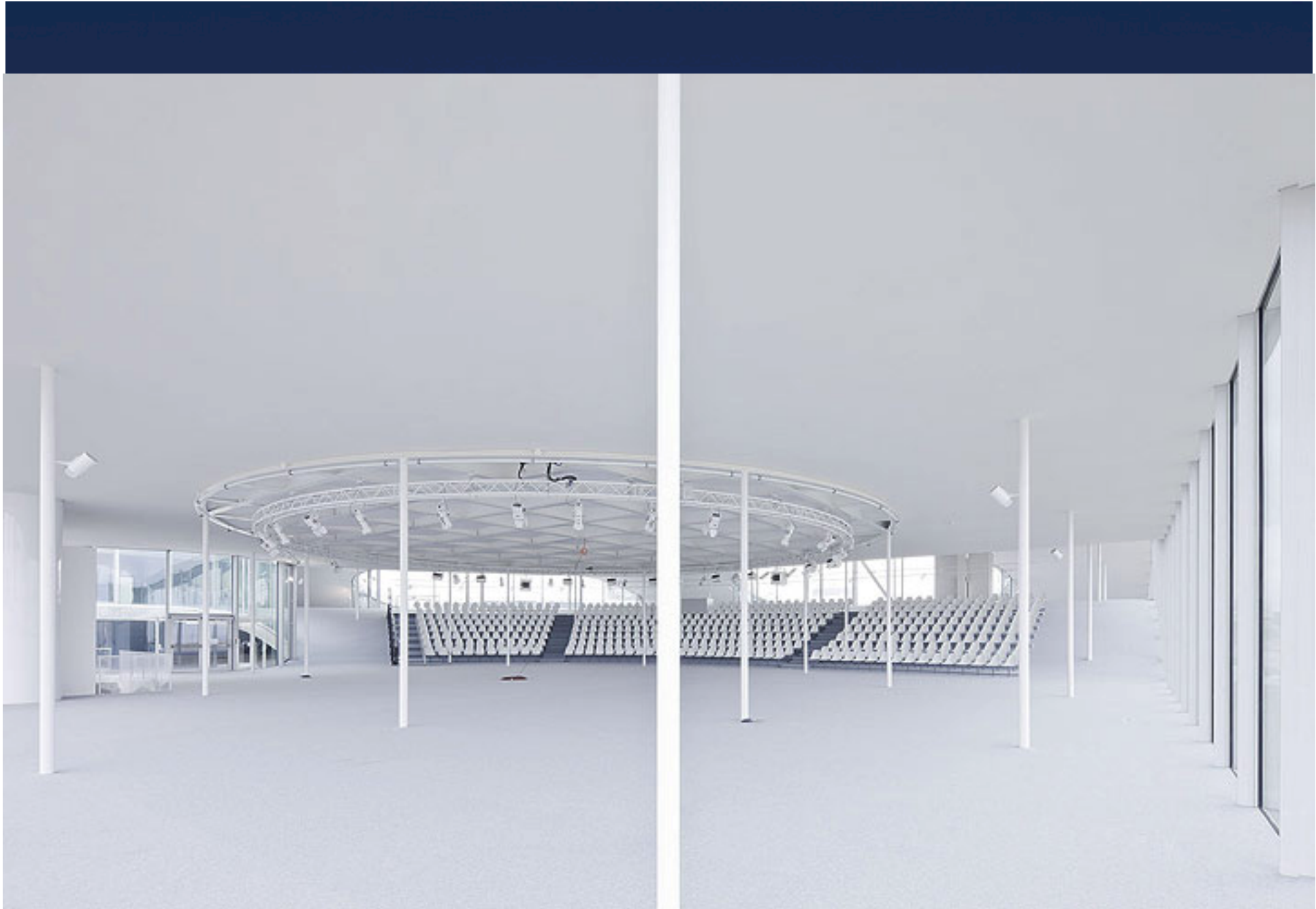


Photo: Iwan Ban









Photo: Iwan Ban







Photo: Iwan Ban

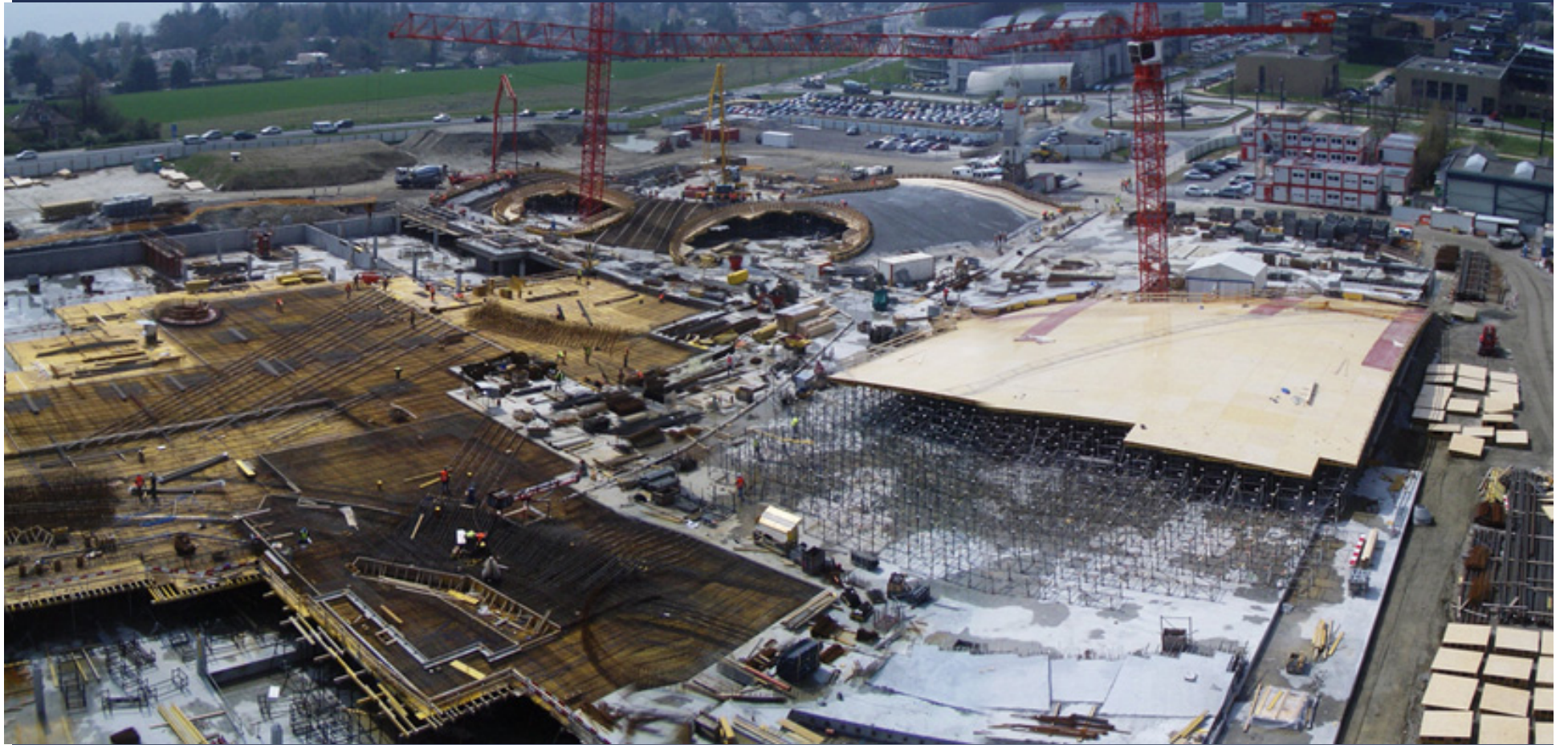
N.C. cut wood beams
frame the undulating roof

Welded Sarnafil PVC roof
membrane





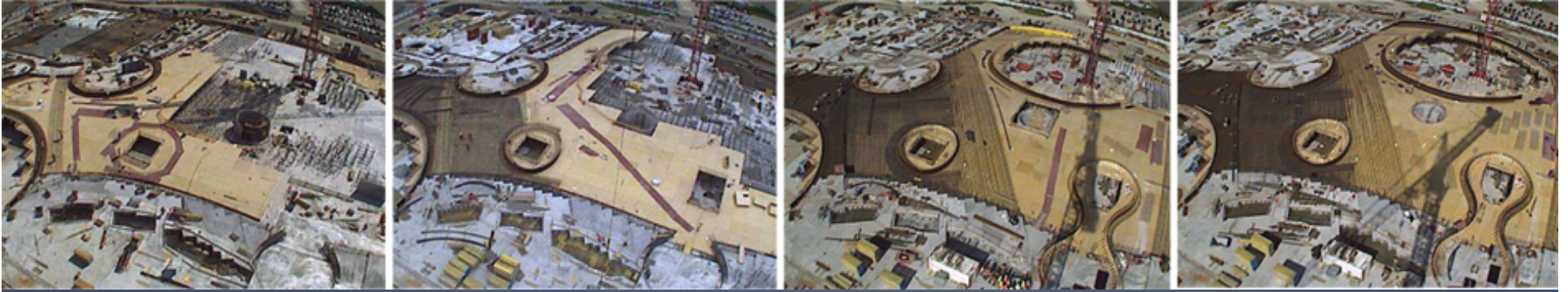


















152,000 cubic feet poured continuously over 2 days

















Raised floor does it all
...ventilation
...radiant heating
...rainwater conduction
...electrical and network

Pour bottom
Layer
Fill with crushed stone
Pour top





